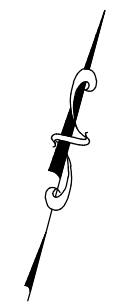
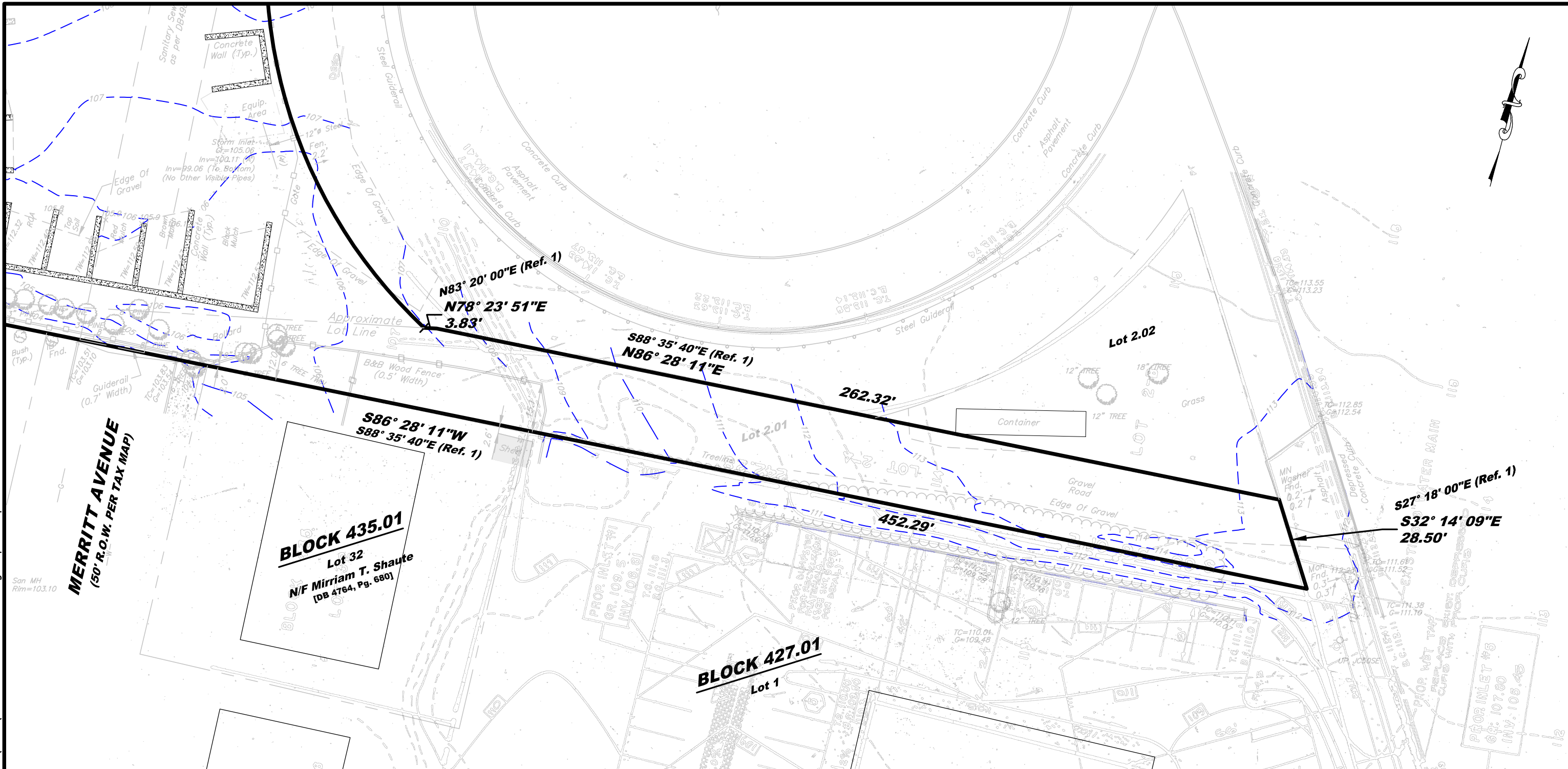
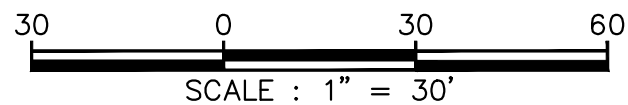


O:\18K\18900\18937 - Bulk Yard 35\CADD\DWG\18937.001 - Demo.dwg TopoComparison



NOTES:

1. TOPOGRAPHIC INFORMATION SHOWN IN BLUE TAKEN FROM A PLAN ENTITLED "BOUNDARY & TOPOGRAPHIC SURVEY PREPARED FOR LOTS 1, 2 & 2.01 - BLOCK 428, SITUATED IN THE BOROUGH OF SAYREVILLE, MIDDLESEX COUNTY, NEW JERSEY" PREPARED BY FRENCH AND PARRELLO ASSOCIATES, DATED JUNE 23, 2022, LAST REVISED 8/9/2022.
2. EXISTING TOPOGRAPHIC INFORMATION SHOWN TAKEN FROM A PLAN ENTITLED "DT ORSIELLO DEVELOPMENT BY CARMEL ENGINEERING GROUP, DATED SEPTEMBER 3, 1987, LAST REVISED OCTOBER 27, 1989"



Corporate Office:
1800 Rt 34, Suite 101
Wall, New Jersey 07719
732.312.9800

FPAengineers.com

New Jersey ▲ New York ▲ Pennsylvania ▲ Georgia

TOPOGRAPHY COMPARISON EXHIBIT

FOR
BULK YARD 35
BLOCK 428, LOTS 1, 2, & 2.01

IN
BOROUGH OF SAYREVILLE
MIDDLESEX COUNTY, NEW JERSEY

DATE: 12-20-2023	DESIGNED BY: KAN	SCALE: 1" = 30'	PROJECT NUMBER: 18937.001
DRAWN BY: KAN	CHECKED BY: LBB	FIELD BOOK	SHEET: 1 of 1