

NEW JERSEY NAD83
 243 LF 8" PVC @ 0.49%
 EX. SMH-2 RIM: 135.90
 EX. INV. IN (8" S): 126.10
 EX. INV. OUT (8" N): 126.10

"PARKVIEW ESTATES"
 MAP No. 3364, FILE 957

BLOCK 327
 LOT 2
 N/F ANTONIO & ANGELA M. AMADO
 DB. 4278, PG. 84

"PARKVIEW ESTATES"
 MAP No. 3364, FILE 957

BLOCK 309
 LOT 10
 N/F PETER & ALICE O'DONNELL
 DB. 5100, PG. 825

BLOCK 309
 LOT 11
 N/F ANNETTE & THOMAS ELIA
 DB. 5829, PG. 128

PROPOSED GAS SERVICE CONNECTION TO BE COORDINATED WITH PSE&G

PROPOSED ELECTRIC & TELECOMMUNICATION CONNECTION TO BE COORDINATED WITH JCP&L

CONNECT PROPOSED 8" C900 PVC WATER MAIN TO EXISTING DEAD END 16" CAST IRON WATER MAIN WITH AN 8"x16" REDUCER. CONTRACTOR TO VERIFY LOCATION OF EXISTING WATER MAIN IN THE FIELD. CONNECTION TO BE COORDINATED WITH SAYREVILLE WATER AND SEWER DEPARTMENT

BLOCK 332
 LOT 4
 N/F INDUSTRIES, INC.
 (FKA NATIONAL LEAD COMPANY)
 DB. 1137, PG. 397

BLOCK 297
 LOTS 2, 19 & 20
 N/F ACE MOUNTINGS CO., INC.
 DB. 8174, PG. 331

BLOCK 296
 LOTS 1, 2 & 4
 N/F MGR REALTY CORPORATION

BLOCK 333.01
 LOT 18.01
 N/F MIDDLESEX WATER COMPANY
 DB. 4383, PG. 165

BLOCK 333
 LOT 1
 N/F NL INDUSTRIES, INC.
 (FKA NATIONAL LEAD COMPANY)
 DB. 1349, PG. 418
 AREA=762,053 S.F. ±
 17.4943 ACRES ±

Date	Description	No.
16 DEC 22	REVISED PER BOROUGH REVIEW COMMENTS	3
4 FEB 22	REVISED PER BOROUGH REVIEW COMMENTS	2
15 MAY 20	COMPLETENESS RESUBMISSION	1

REVISIONS		
Date	Description	No.

SIGNATURE: LEONARD D. SAVINO DATE SIGNED: 20 DECEMBER 2019
 PROFESSIONAL ENGINEER NJ Lic. No. GE-39238

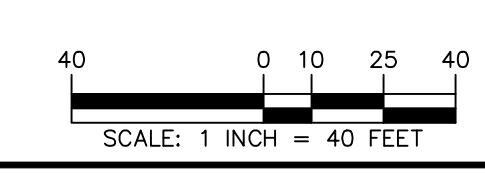
LANGAN
 Langan Engineering and Environmental Services, Inc.
 300 Kimball Drive
 Parsippany, NJ 07054
 T: 973.560.4900 F: 973.560.4901 www.langan.com
 NJ CERTIFICATE OF AUTHORIZATION No. 26GAJ2796460

Project: **NATIONAL LEAD REDEVELOPMENT**
 BLOCK No. 297, LOT No. 1
 BLOCK No. 332, LOTS No. 1-4
 BLOCK No. 333, LOT No. 1
 BOROUGH OF SAYREVILLE NEW JERSEY
 Drawing Title

OVERALL UTILITY PLAN

Project No. 100580901 Drawing No. AE-5
 Date: 20 DECEMBER 2019
 Drawn By: BMW
 Checked By: JED

LEGEND	
	PROPERTY LINE
	PROPOSED CROSS AVENUE RIGHT OF WAY LINE
	PROPOSED GRAVITY SANITARY SEWER MAIN
	PROPOSED SANITARY SEWER FORCE MAIN
	PROPOSED SANITARY SEWER MANHOLE
	PROPOSED SANITARY SEWER CLEANOUT
	PROPOSED WATER MAIN
	PROPOSED WATER VALVE
	PROPOSED FIRE HYDRANT
	PROPOSED ELECTRIC / TELECOMMUNICATIONS MAIN
	PROPOSED GAS MAIN
	PROPOSED CONCRETE ENCASUREMENT



REFER TO DRAWING CS002 FOR GENERAL AND REFERENCE NOTES
 REFER TO DRAWINGS CU101 THROUGH CU104 FOR ENLARGEMENTS

