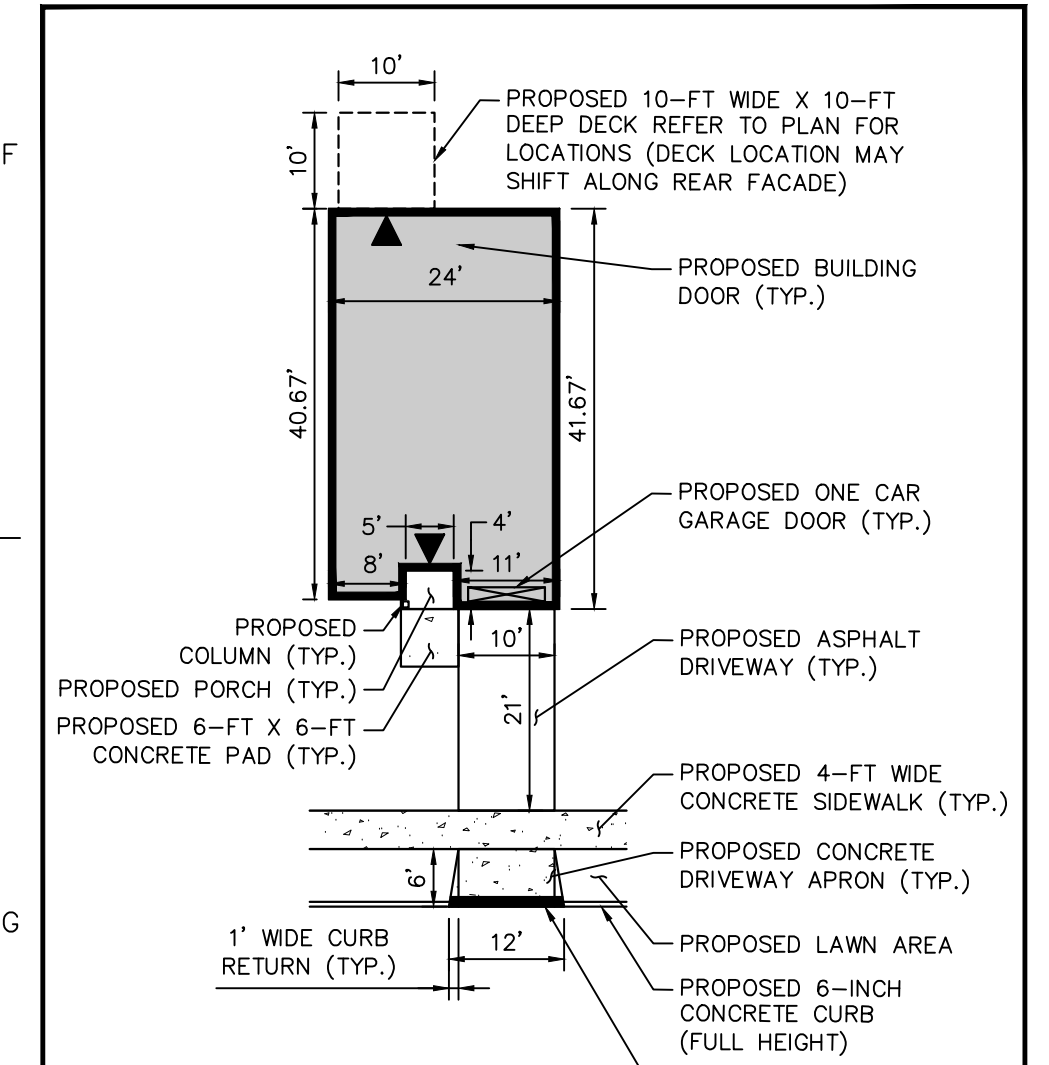


IN ACCORDANCE WITH BMP MANUAL REQUIREMENTS, POST-CONSTRUCTION TESTING MUST BE PERFORMED ON THE AS-BUILT INFILTRATION BASINS TO ENSURE THAT THE INSTALLED BMP FUNCTIONS AS DESIGNED. WHERE AS-BUILT TESTING SHOWS A LONGER DRAIN TIME THAN DESIGNED, CORRECTIVE ACTION MUST BE TAKEN AND THE BASIN SHALL BE RE-TESTED.

STORAGE OF SOLID WASTES SHALL BE WITHIN THE INDIVIDUAL UNITS. SOLID WASTE WILL BE COLLECTED BY AN INDEPENDENT COLLECTION COMPANY ON A REGULAR SCHEDULE.



PARKING SUMMARY		
	REQUIRED (PER RSIS)	PROPOSED
3-BEDROOM MARKET RATE UNITS	300 PARKING SPACES (INCLUDES 63 ON-STREET OR COMMON AREA GUEST PARKING SPACES)	313 PARKING SPACES (INCLUDES 49 ON-STREET OR COMMON AREA GUEST PARKING SPACES)
AFFORDABLE HOUSING UNITS	16 PARKING SPACES (INCLUDING 1 ACCESSIBLE SPACE)	16 PARKING SPACES (INCLUDING 1 ACCESSIBLE SPACE)
TOTAL	316 PARKING SPACES	329 PARKING SPACES

BUILDING SUMMARY	
18 CLUSTERS	
125 MARKET RATE TOWNHOUSE UNITS	(125 - 3 BEDROOM)
	(ALL 125 UNITS ARE BASEMENT UNITS)
7 AFFORDABLE TOWNHOUSE UNITS	(2 - 1 BEDROOM UNITS) (2 - 2 BEDROOM UNITS) (2 - 3 BEDROOM UNITS) (ALL 7 ARE SLAB ON GRADE UNITS)
132 TOTAL UNITS	

LEGEND	
	PROPERTY LINE
	PROPOSED CROSS AVENUE RIGHT OF WAY LINE
	PROPOSED BUILDING SETBACK LINE
	PROPOSED BUILDING
	PROPOSED 6" CONCRETE CURB
	PROPOSED DEPRESSED CONCRETE CURB AT DRIVEWAY RAMPS / FLUSH CURB AT ADA RAMPS
	PROPOSED CONCRETE SIDEWALK
	PROPOSED RETAINING WALL
	PROPOSED SIGN (SEE SIGN LEGEND)
	PROPOSED BUILDING DOOR
	PROPOSED STEEL BOLLARD WITH CHAIN

SIGN LEGEND			

Date	Description	No.
16 DEC 22	REVIEW PER BOROUGH	3
4 FEB 22	REVIEW PER BOROUGH	2
15 MAY 20	COMPLETENESS RESUBMISSION	1

LANGAN
Langan Engineering and Environmental Services, Inc.
300 Kimball Drive
Parsippany, NJ 07054

NATIONAL LEAD REDEVELOPMENT
BLOCK No. 297, LOT No. 1
BLOCK No. 332, LOTS Nos. 1 - 4
BLOCK No. 333, LOT No. 1
BOROUGH OF SAYREVILLE
NEW JERSEY

SITE PLAN

Project No. 100580901
Drawing No. AE-3
Date: 20 DECEMBER 2019
Checked By: JED