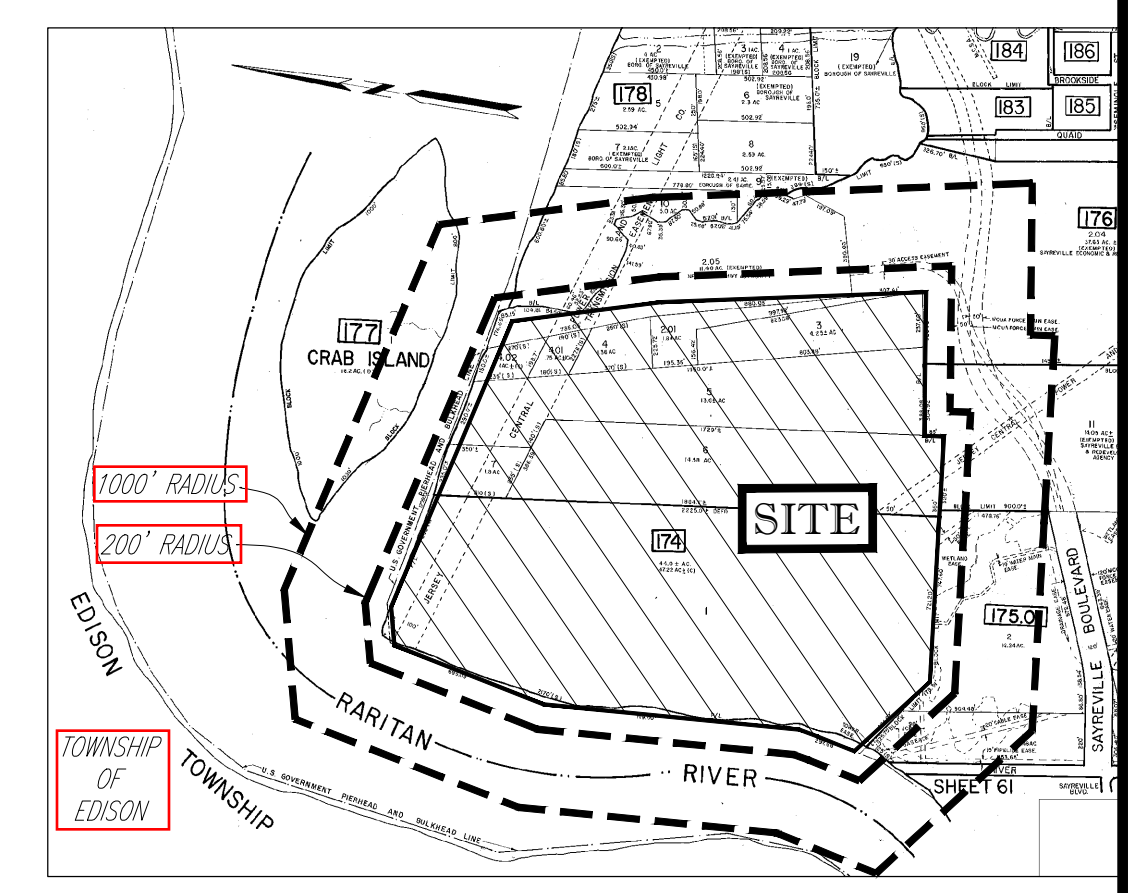
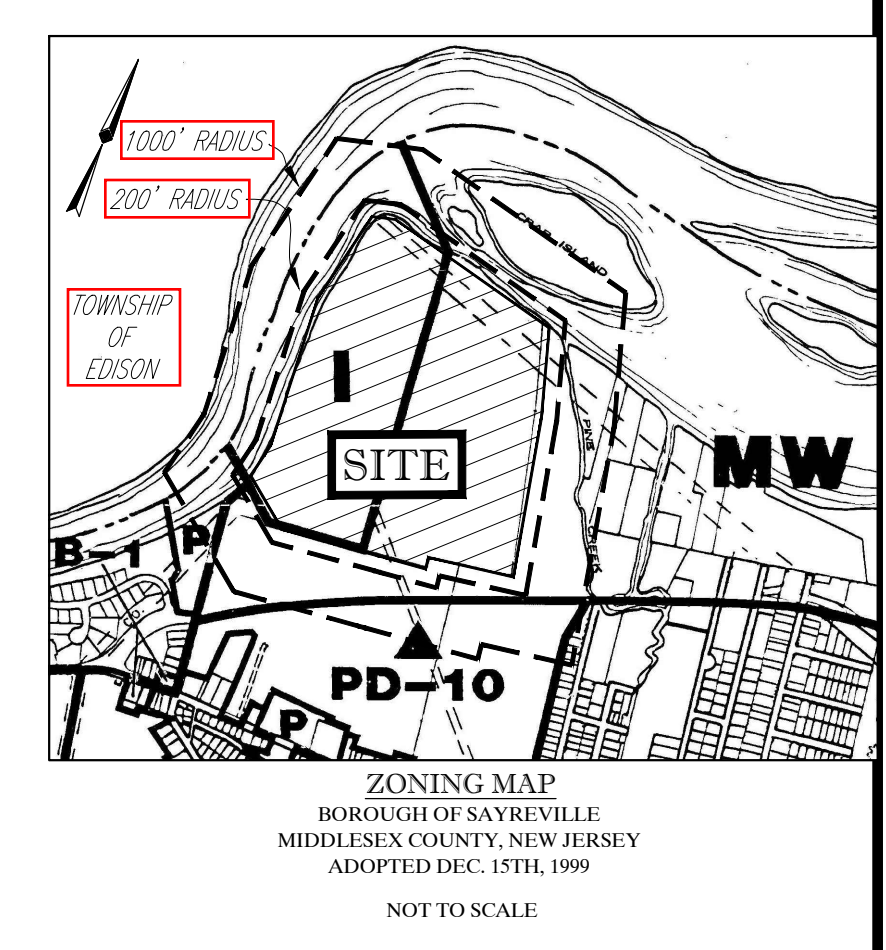
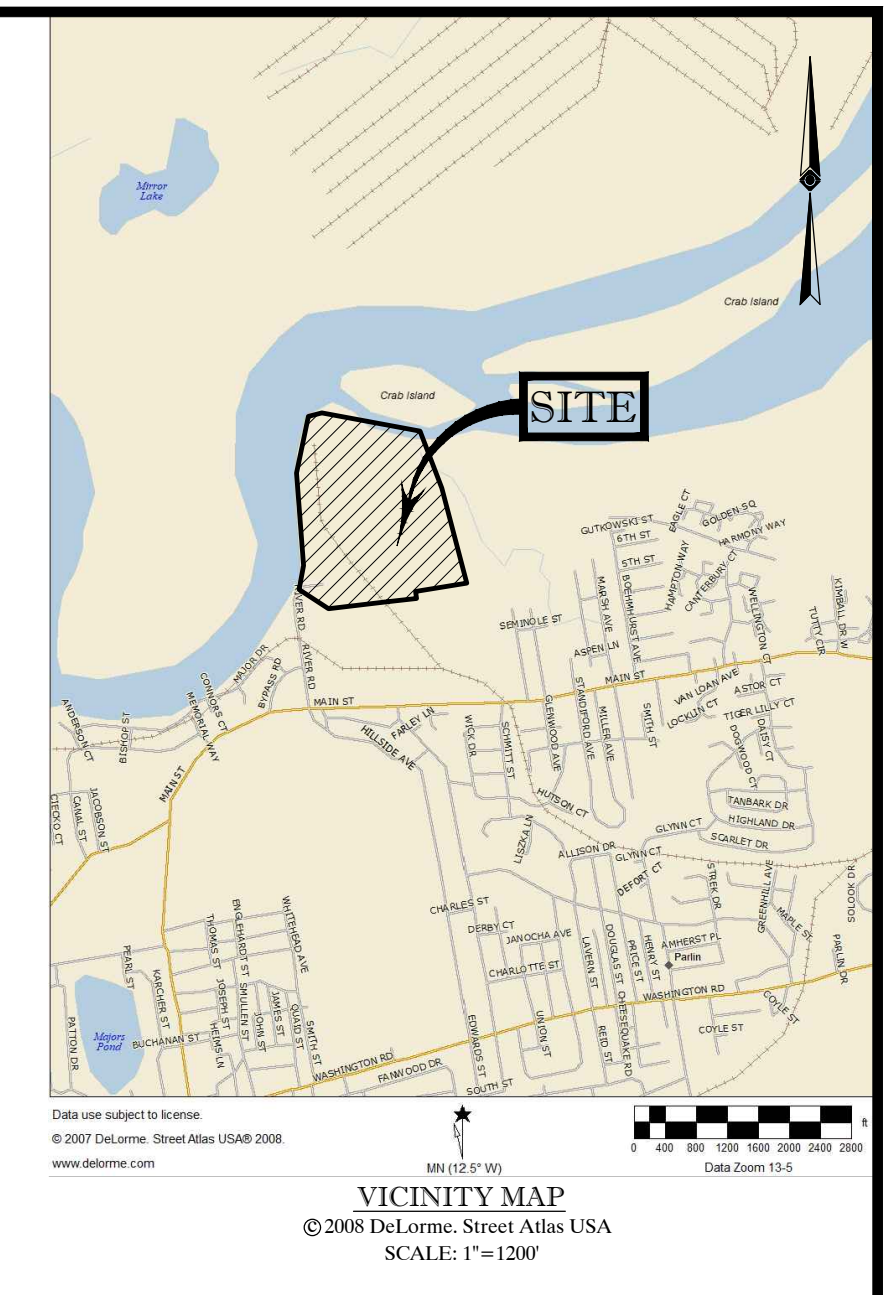
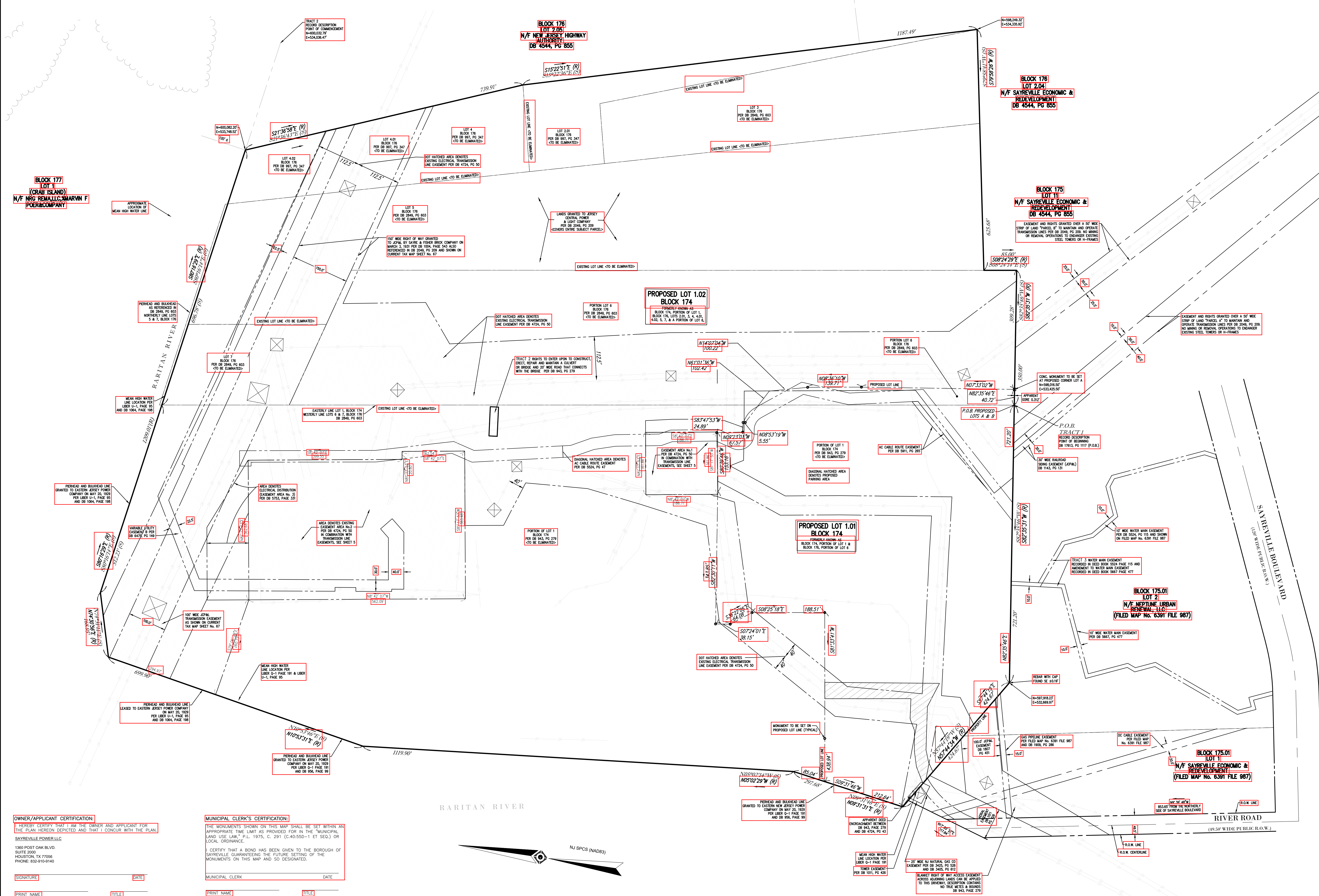


SUBSTATION & TRANSMISSION LINE EASEMENT DETAIL



OWNER/APPLICANT CERTIFICATION:
 I HEREBY CERTIFY THAT I AM THE OWNER AND APPLICANT FOR THE PLAN HEREON DEPICTED AND THAT I CONCUR WITH THE PLAN, SAYREVILLE POWER LLC.
 1360 PINE OAK BLVD.
 SUITE 2000
 HOUSTON, TX 77056
 PHONE: 832-910-4140

MUNICIPAL CLERK'S CERTIFICATION:
 THE MONUMENTS SHOWN ON THIS MAP SHALL BE SET WITHIN AN APPROPRIATE TIME LIMIT AS PROVIDED FOR IN THE "MUNICIPAL LAND USE LAW," P.L. 1975, C. 291 (C.40:55-1 ET SEQ.) OR LOCAL ORDINANCE.
 I CERTIFY THAT A BOND HAS BEEN GIVEN TO THE BOROUGH OF SAYREVILLE GUARANTEEING THE FUTURE SETTING OF THE MONUMENTS ON THIS MAP AND SO DESIGNATED.

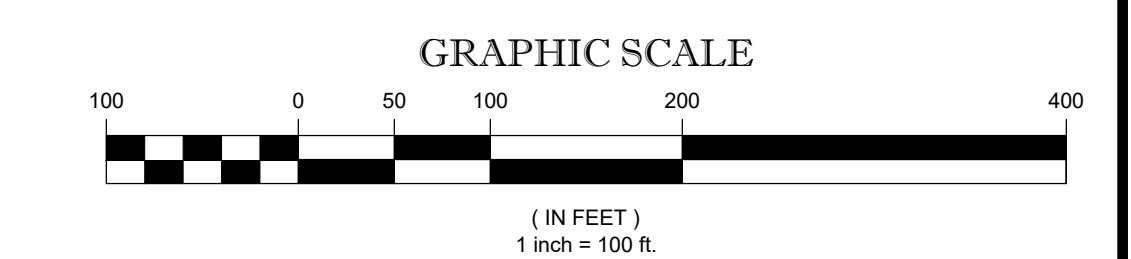
MUNICIPAL ENGINEER CERTIFICATION:
 I HAVE CAREFULLY EXAMINED THIS MAP AND TO THE BEST OF MY KNOWLEDGE AND BELIEF FIND IT CONFORMS WITH THE PROVISIONS OF THE "MAP FILING LAW," RESOLUTION OF APPROVAL AND THE MUNICIPAL ORDINANCES AND REQUIREMENTS APPLICABLE THEREON.

MUNICIPAL PLANNING BOARD APPROVAL:
 THIS MAP WAS APPROVED AT A MEETING OF THE PLANNING BOARD OF THE BOROUGH OF SAYREVILLE, MIDDLESEX COUNTY, STATE OF NEW JERSEY, HELD ON THE _____ DAY OF _____, 20____, AND SAID MAP SHALL BE FILED IN THE MIDDLESEX COUNTY CLERK'S OFFICE ON OR BEFORE THE _____ DAY OF _____, 20____, IN ACCORDANCE WITH CHAPTER 35, P.L. 1953 AND AS AMENDED BY CHAPTER 141, P.L. 1960.

MUNICIPAL ENGINEERS:
 SIGNATURE: _____ DATE: _____
 PRINT NAME: _____ TITLE: _____

CHAIRMAN: _____ DATE: _____
SECRETARY: _____ DATE: _____
 PRINT NAME: _____ TITLE: _____

- LEGEND**
- S.F. SQUARE FEET
 - SET/FOUND MONUMENT AS NOTED
 - MONUMENTS ALONG PROPOSED LOT TO BE SET
 - GAS VALVE
 - WATER VALVE
 - STORM MANHOLE
 - SANITARY MANHOLE
 - UTILITY POLE
 - GUY ANCHOR
 - LIGHT POLE
 - FIRE HYDRANT
 - FIELD
 - SIGN
 - BOLLARD
 - APPROX. LOC. OF UNDERGROUND GAS LINE
 - OVERHEAD UTILITY LINE
 - UNBARRICADED MANHOLE
 - FENCE LINE
 - EASEMENT
 - PROPOSED LOT LINE
 - PROPERTY LINE
 - SURVEY DIMENSION
 - RECORD DIMENSION (SEE REF. #4)
 - POINT OF BEGINNING



I CERTIFY THAT TO THE BEST OF MY KNOWLEDGE AND BELIEF THIS MAP AND LAND SURVEY DATED JULY 29, 2020 MEET THE MINIMUM SURVEY DETAIL REQUIREMENTS OF THE STATE BOARD OF PROFESSIONAL ENGINEERS AND LAND SURVEYORS AND THE MAP HAS BEEN MADE UNDER MY SUPERVISION AND COMPLES WITH THE "MAP FILING LAW" AND THAT THE OUTBOUND CORNER MARKERS AS SHOWN HAVE BEEN FOUND, OR SET.

NOT A VALID ORIGINAL DOCUMENT UNLESS EMBOSSED WITH RAISED IMPRESSIONS

JAMES D. SENS
 NEW JERSEY PROFESSIONAL LAND SURVEYOR #242804323800
 NEW JERSEY CERTIFICATE OF AUTHORIZATION #242804323800

09-03-2020 DATE

NO.	DESCRIPTION OF REVISION	FIELD CREW	DRAWN	APPROVED	DATE
1	MINOR SUBDIVISION PLAT				
2	RIVER ROAD				
3	BLOCK 174, LOT 1 & BLOCK 176, LOTS 2.01, 3, 4, 4.01, 4.02, 5, 6 & 7				
4	BOROUGH OF SAYREVILLE				
5	MIDDLESEX COUNTY				
6	STATE OF NEW JERSEY				

CONTROL POINT ASSOCIATES, INC. PC
 9 TIME SQUARE, 200 WEST 41ST STREET
 SUITE 1200, NEW YORK, NY 10036
 WWW.CONTROLPOINT.COM

WARREN, NJ 07068-0009
 ME LAUREL, NJ 08047-2006
 MULTIMEDIA, NJ 08054-2000
 LIVINGSTON, NJ 07033-2040
 ROCKY HILL, CT 06067-0000
 ROCKY HILL, CT 06067-0000

APPROVED: _____ DATE: 12-09-2019 SCALE: 1"=100' FILE NO: 04-190297 DWG. NO: 5 OF 5