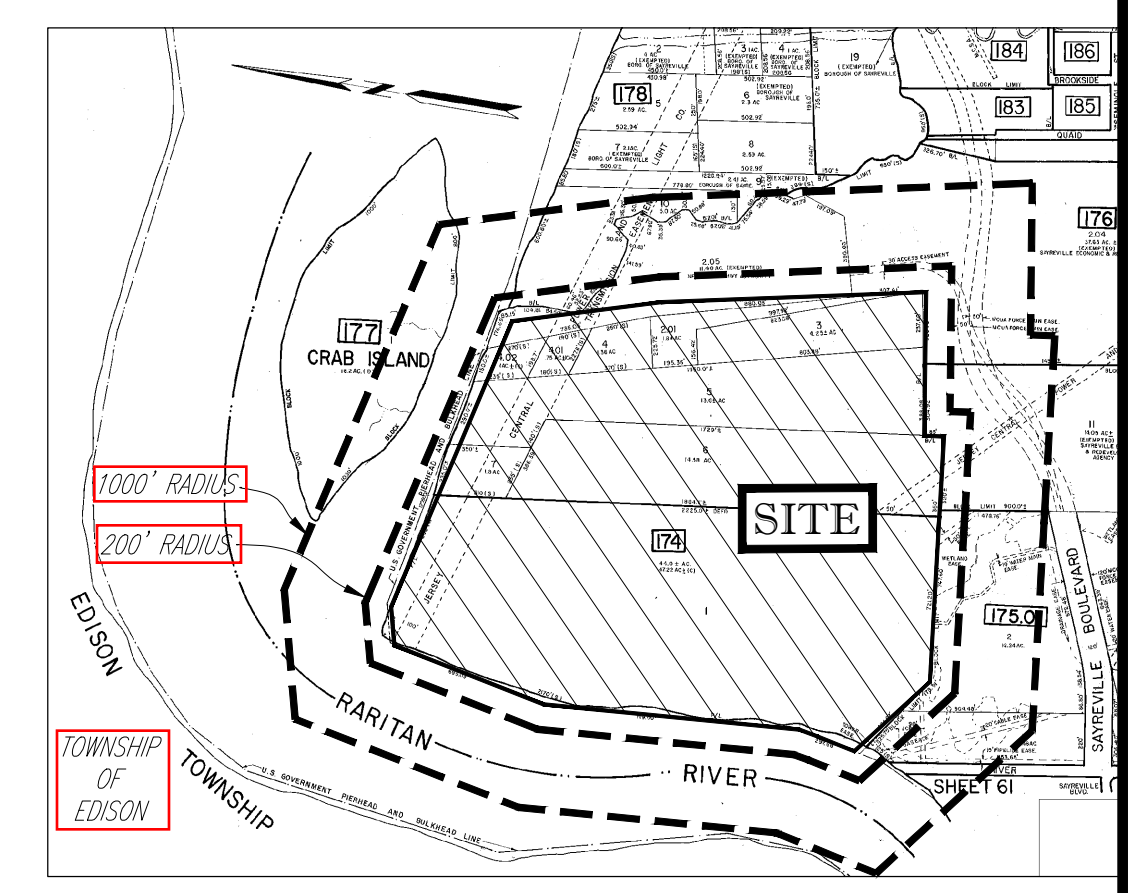
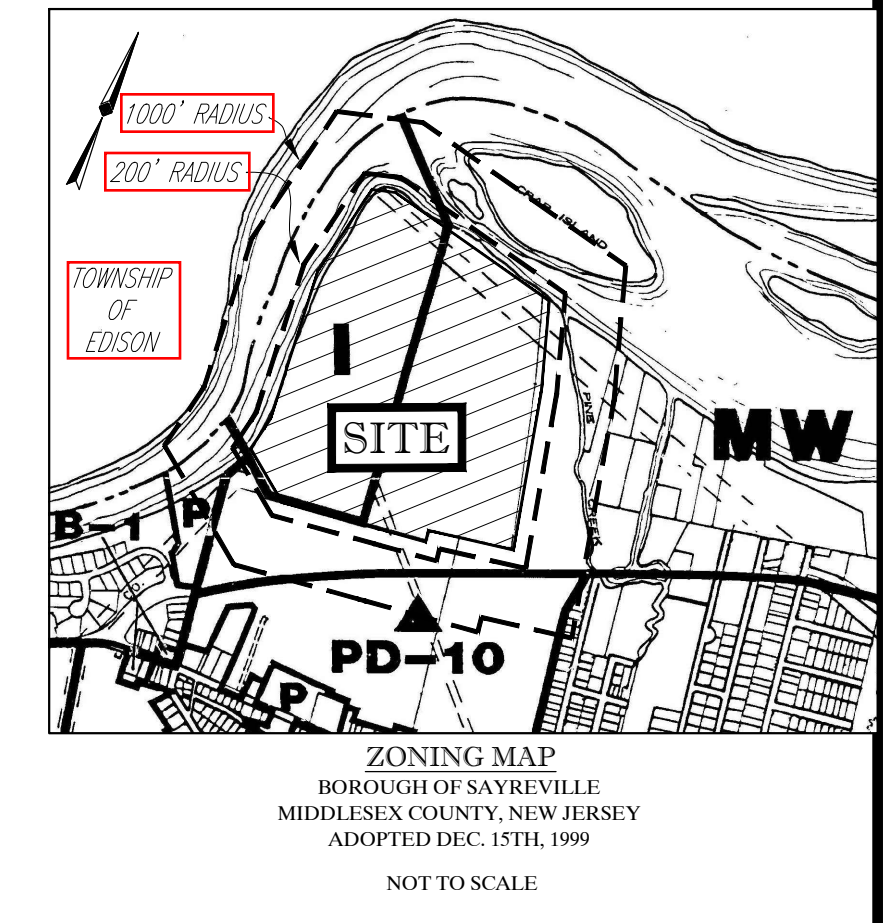
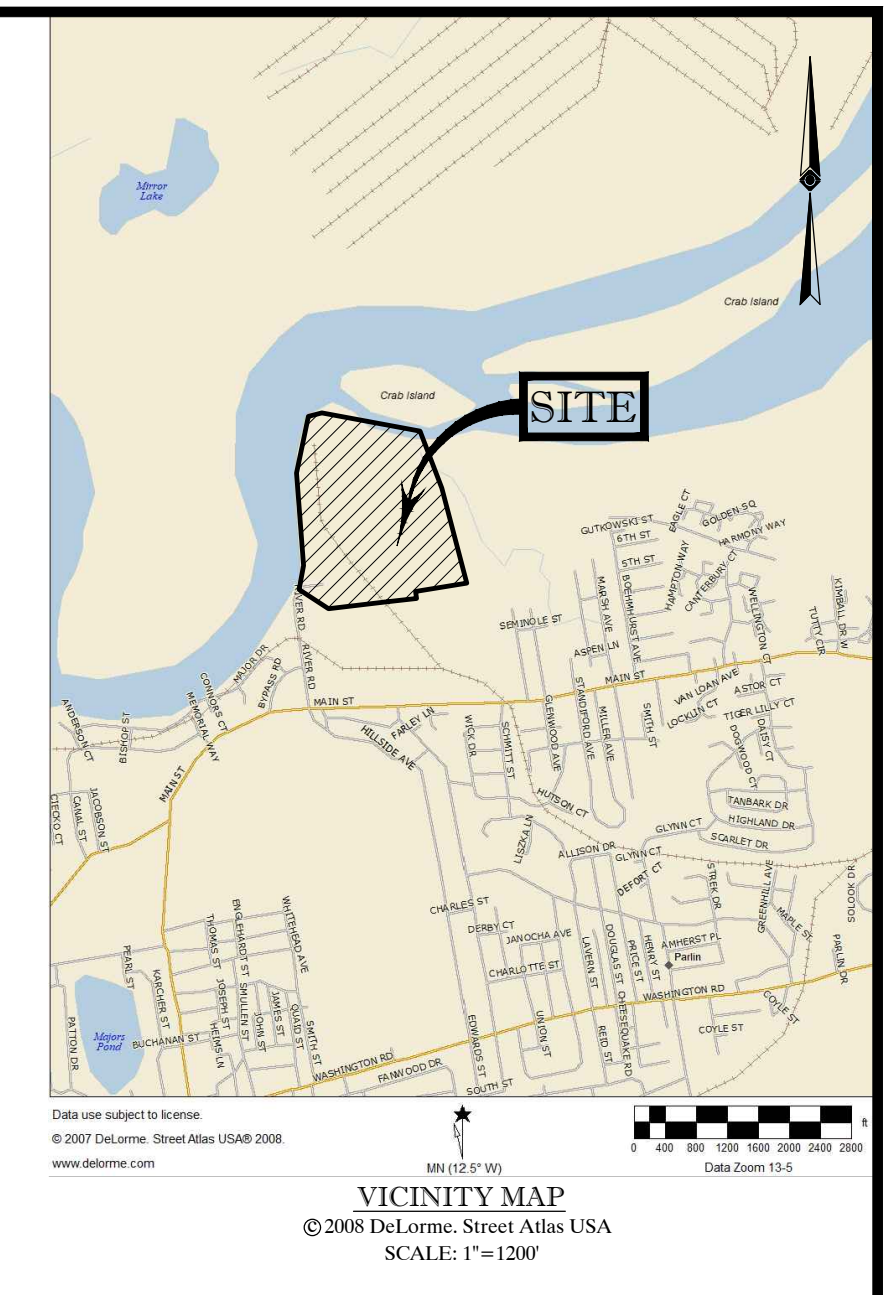
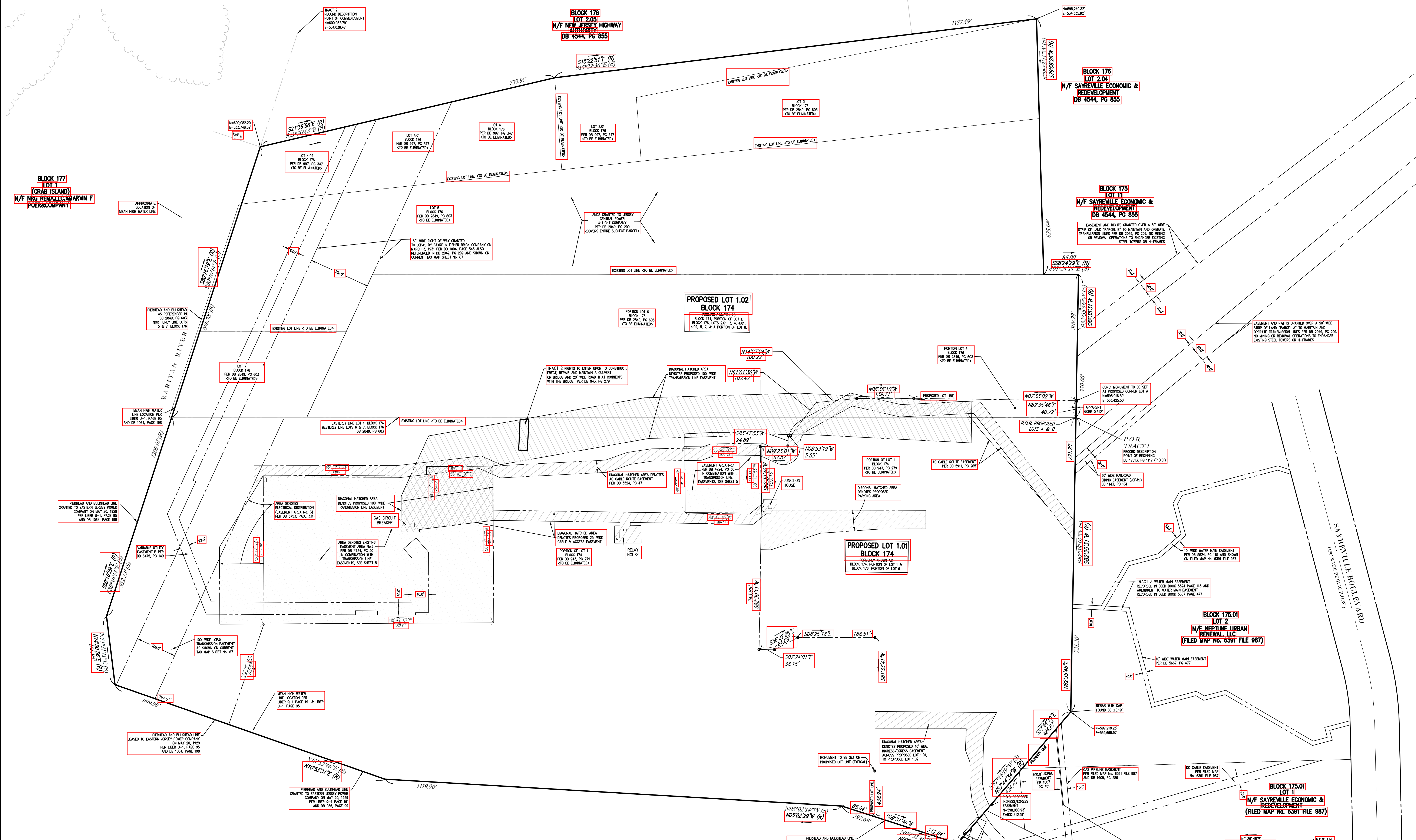


EASEMENT DETAIL



**OWNER/APPLICANT CERTIFICATION:**  
 I HEREBY CERTIFY THAT I AM THE OWNER AND APPLICANT FOR THE PLAN HEREON DEPICTED AND THAT I CONCUR WITH THE PLAN, SAYREVILLE POWER LLC  
 1360 PINE OAK BLVD.  
 SUITE 2000  
 HOUSTON, TX 77056  
 PHONE: 832-910-4140

**MUNICIPAL CLERK'S CERTIFICATION:**  
 THE MONUMENTS SHOWN ON THIS MAP SHALL BE SET WITHIN AN APPROPRIATE TIME LIMIT AS PROVIDED FOR IN THE "MUNICIPAL LAND USE LAW," P.L. 1975, C. 291 (C.40:55-1 ET SEQ.) OR LOCAL ORDINANCE.  
 I CERTIFY THAT A BOND HAS BEEN GIVEN TO THE BOROUGH OF SAYREVILLE GUARANTEEING THE FUTURE SETTING OF THE MONUMENTS ON THIS MAP AND SO DESIGNATED.

**MUNICIPAL ENGINEER CERTIFICATION:**  
 I HAVE CAREFULLY EXAMINED THIS MAP AND TO THE BEST OF MY KNOWLEDGE AND BELIEF FIND IT CONFORMS WITH THE PROVISIONS OF THE "MAP FILING LAW," RESOLUTION OF APPROVAL AND THE MUNICIPAL ORDINANCES AND REQUIREMENTS APPLICABLE THEREOF.

**MUNICIPAL PLANNING BOARD APPROVAL:**  
 THIS MAP WAS APPROVED AT A MEETING OF THE PLANNING BOARD OF THE BOROUGH OF SAYREVILLE, MIDDLESEX COUNTY, STATE OF NEW JERSEY, HELD ON THE \_\_\_\_\_ DAY OF \_\_\_\_\_, 20\_\_\_\_, AND SAID MAP SHALL BE FILED IN THE MIDDLESEX COUNTY CLERK'S OFFICE ON OR BEFORE THE \_\_\_\_\_ DAY OF \_\_\_\_\_, 20\_\_\_\_, IN ACCORDANCE WITH CHAPTER 35, P.L. 1953 AND AS AMENDED BY CHAPTER 141, P.L. 1960.

**MUNICIPAL ENGINEERS:**  
 SIGNATURE \_\_\_\_\_ DATE \_\_\_\_\_  
 PRINT NAME \_\_\_\_\_ TITLE \_\_\_\_\_

**CHAIRMAN:** \_\_\_\_\_ DATE \_\_\_\_\_  
**SECRETARY:** \_\_\_\_\_ DATE \_\_\_\_\_  
 PRINT NAME \_\_\_\_\_ TITLE \_\_\_\_\_

- LEGEND**
- S.F. SQUARE FEET
  - SECTION
  - SECTION DIMENSION
  - RECORD DIMENSION
  - SECTION DIMENSION
  - ANALYTICAL CONCRETE PAD
  - RECORD DIMENSION
  - ELECTRIC VALVE
  - TELECOMMUNICATIONS PEDESTAL
  - CONCRETE
  - ELECTRIC BOX
  - CONCRETE
  - GRATED INLET
  - ELECTRIC MANHOLE
  - UNWARRANTED MANHOLE
  - CATCH BASIN
  - SET/FOUND MONUMENT AS NOTED
  - MONUMENTS ALONG PROPOSED LOT TO BE SET
  - GAS VALVE
  - WATER VALVE
  - STORM MANHOLE
  - SANITARY MANHOLE
  - UTILITY POLE
  - GUY ANCHOR
  - LIGHT POLE
  - FIELD
  - FIRE HYDRANT
  - CONCRETE
  - SIGN
  - BOLLARD
  - APPROX. LOC. OF UNDERGROUND GAS LINE
  - OVERHEAD UTILITY LINE
  - FENCE LINE
  - EASEMENT
  - PROPOSED LOT LINE
  - PROPERTY LINE
  - SURVEY DIMENSION
  - RECORD DIMENSION (SEE REF. #4)
  - POINT OF BEGINNING

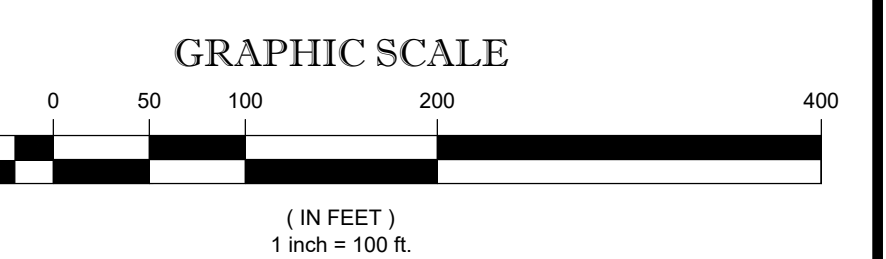
SEE SHEET 5 OF 5 FOR  
 ADDITIONAL SUBSTATION &  
 TRANSMISSION LINE  
 EASEMENT DETAIL

I CERTIFY THAT TO THE BEST OF MY KNOWLEDGE AND BELIEF THIS MAP AND LAND SURVEY DATED JULY 29, 2020 MEET THE MINIMUM SURVEY DETAIL REQUIREMENTS OF THE STATE BOARD OF PROFESSIONAL ENGINEERS AND LAND SURVEYORS AND THE MAP HAS BEEN MADE UNDER MY SUPERVISION AND COMPLES WITH THE "MAP FILING LAW" AND THAT THE OUTBOUND CORNER MARKERS AS SHOWN HAVE BEEN FOUND, OR SET.

NOT A VALID ORIGINAL DOCUMENT UNLESS EMBOSSED WITH RAISED IMPRESSION

**JAMES D. SENS**  
 NEW JERSEY PROFESSIONAL LAND SURVEYOR #24204322800  
 NEW JERSEY CERTIFICATE OF AUTHORIZATION #24242793800

09-03-2020 DATE



NO.	DESCRIPTION OF REVISION	FIELD/CREW	DRAWN	APPROVED	DATE
1	MINOR SUBDIVISION PLAT				
2	RIVER ROAD				
3	BLOCK 174, LOT 1 & BLOCK 176, LOTS 2.01, 3, 4, 4.01, 4.02, 5, 6 & 7				
4	BOROUGH OF SAYREVILLE				
5	MIDDLESEX COUNTY				
6	STATE OF NEW JERSEY				

**CONTROL POINT ASSOCIATES, INC. P.C.**  
 9 TIME SQUARE, 200 WEST 41ST STREET  
 SUITE 1200, NEW YORK, NY 10036  
 WWW.CONTROLPOINT.COM

WARREN, NJ 07060-0000  
 METLIFE, NJ 08007-2000  
 METROPCS, NJ 07102-2000  
 SUNGARD, NJ 07102-2000  
 SUNGARD, NJ 07102-2000  
 SUNGARD, NJ 07102-2000  
 SUNGARD, NJ 07102-2000

DATE: 12-09-2019  
 SCALE: 1"=100'  
 FILE NO: 04-190297  
 DWG. NO: 4 OF 5