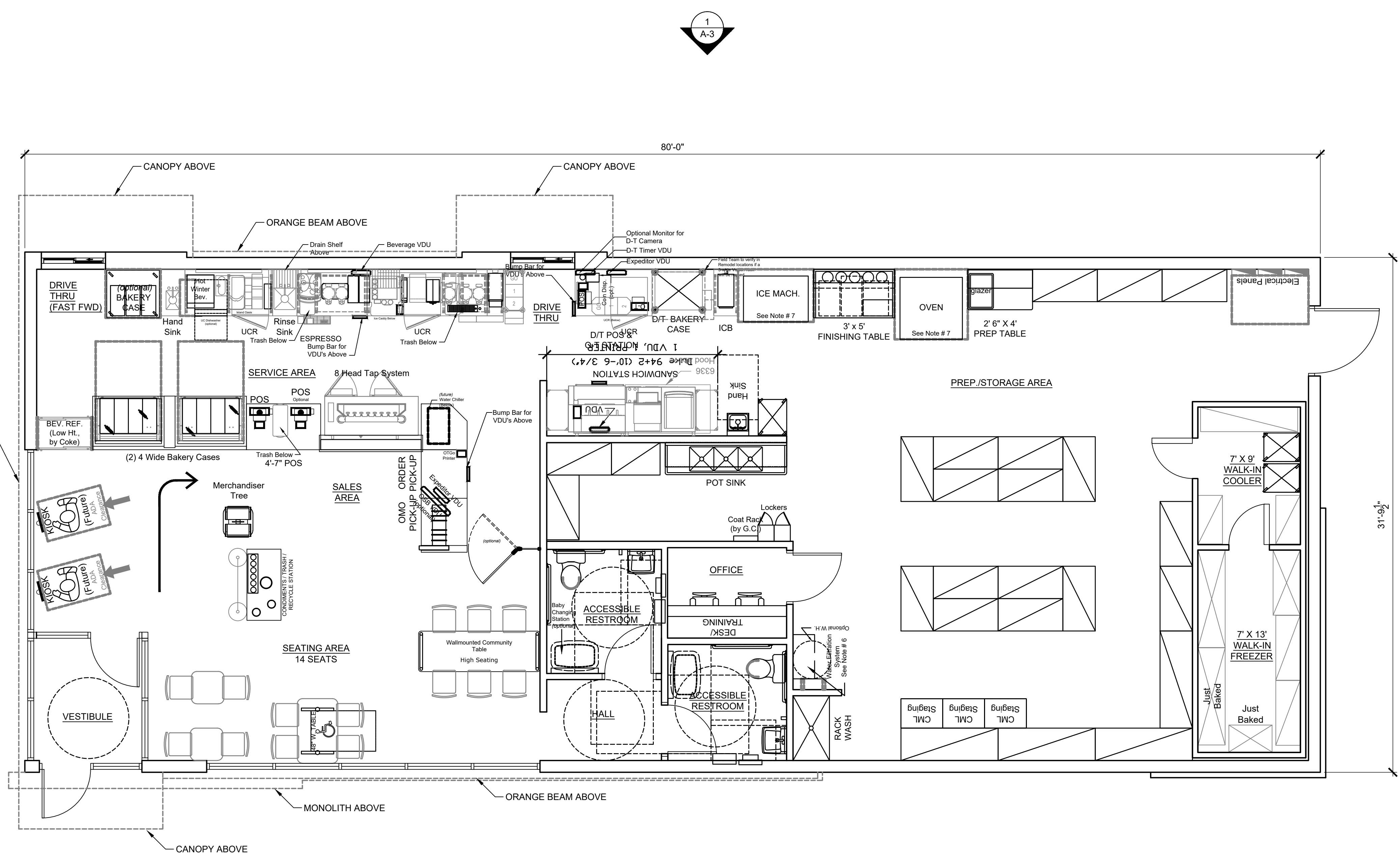


Rev. No.	Drawing Issues / Revisions	Date

NJ: AI 13332	NJCID: 21D00025000	<p><b>Gary Kliesch</b>        A.I.A., N.C.A.R.B., N.C.I.D.</p>	
NY: 025618	CT: ARI 0009367		
FL: AR95782	DE: SS-0007765		
WI: 11180-5	MD: 14129		
PA: RA-015112-B	SC: 8935		
D.C.: ARC101838	MA: 10610		
GA: RA 013963	MI: 1301064135		
VA: 401016373	IL: 001.023586		
NC: 11736	WV: 4569	NH: 04487	

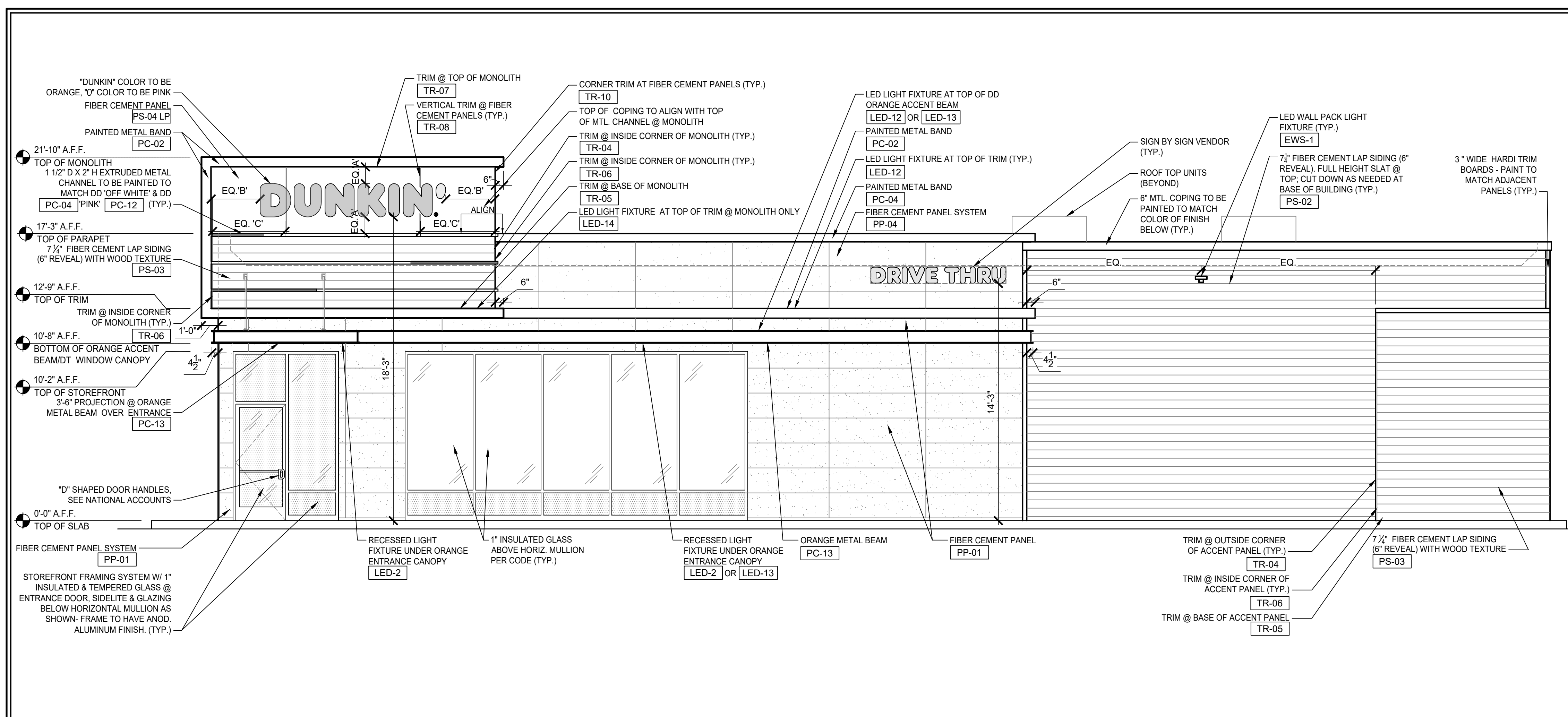
Proposed:  
**DUNKIN'**  
 Block 368.07, Lots 1 & 2  
 2909 Washington Rd. & North Ermon Rd.  
 Sayreville, Middlesex County, NJ

Drawing Title: PROPOSED FLOOR PLAN	
Date: 03/19/2020	Dwg No. A.1.0
Drawn By: J.M.	
Checked By: D.F.	
Job No: 20-212	1 of 4

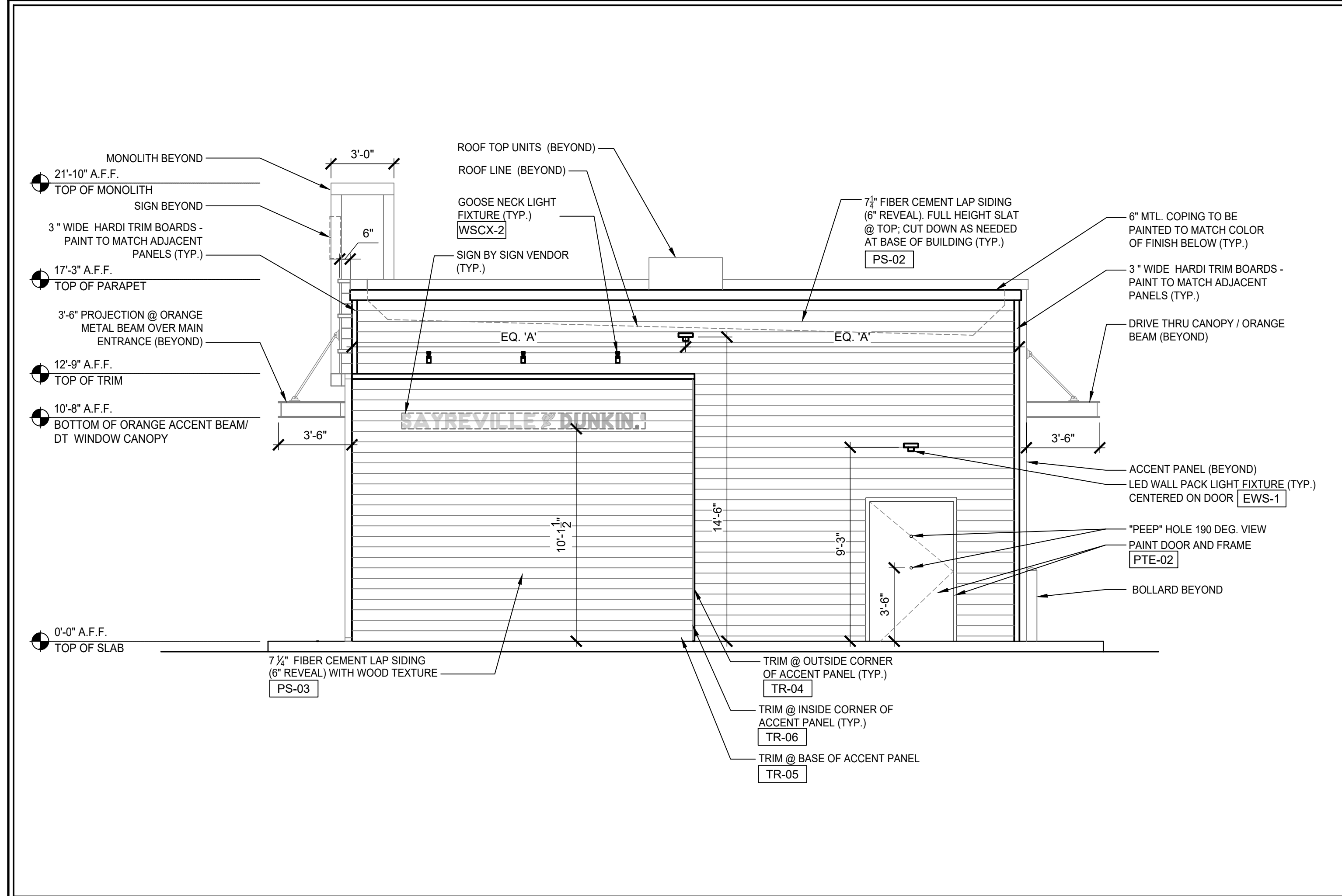


1 PROPOSED FLOOR PLAN  
 1/4" = 1'-0" NOTE:





**1 WEST ELEVATION (@ NORTH ERNSTON RD.)**  
 1/4" = 1'-0" NOTE:



**2 SOUTH ELEVATION**  
 1/4" = 1'-0" NOTE:

DESCRIPTION	ALLOWED	PROPOSED	VARIANCE
(2) BLDG. SIGN @ WEST ELEVATION (NORTH ERNSTON RD.) REFER TO DET. #7 & #9/A-4.0 PRIMARY SIGN "DUNKIN" SECONDARY SIGN "DRIVE THRU"	(1) SIGN - ONE SQ. FT. FOR EACH LINEAR FOOT OF BUILDING WIDTH OR 50 SQ. FT., WHICHEVER IS LESS BLDG. SIGN HEIGHT ABOVE GRADE = 18'-3" (1) DRIVE THRU = 8.12 S.F. BLDG. SIGN HEIGHT ABOVE GRADE = 14'-3" 22.3 + 8.12 = 30.42 S.F.	(1) "DUNKIN" = 22.3 S.F. BLDG. SIGN PROJECTION = 5" BLDG. SIGN HEIGHT ABOVE GRADE = 18'-3" (1) DRIVE THRU = 8.12 S.F. BLDG. SIGN HEIGHT ABOVE GRADE = 14'-3" 22.3 + 8.12 = 30.42 S.F.	(V)
(1) BLDG. SIGN @ SOUTH ELEVATION (WASHINGTON RD.) REFER TO DET. #8/A-4.0 ACCENT SIGN "SAYREVILLE RUNS ON DUNKIN"	(1) SIGN - ONE SQ. FT. FOR EACH LINEAR FOOT OF BUILDING WIDTH OR 50 SQ. FT., WHICHEVER IS LESS BUILDING SIGNS ALSO INCLUDE CANOPY SIGNS FOR PURPOSES OF TOTAL CALCULATION OF SIGN AREA: TOTAL L.F. WALL: 80 L.F. TOTAL S.F. ALLOWED: 50 S.F. MAX	(1) SAYREVILLE RUNS ON DUNKIN" = 8.7 S.F. BLDG. SIGN HEIGHT ABOVE GRADE = 10'-1 1/2"	(NO)
(1) MONUMENT SIGN REFER TO DET. #6/A-4.0 "DUNKIN' DRIVE THRU"	(1) SANDWICH SIGN TOTAL S.F. ALLOWED: 6 SF MAX. HEIGHT: 4 FT	(1) MONUMENT SIGN "DUNKIN' DRIVE THRU" (DOUBLE SIDED) TOTAL SIGN AREA = 12 S.F. (V) SIGN HEIGHT = 4'-11" (V)	(V)

NOTES

1) ZONE: B-2 - GENERAL BUSINESS  
 2) SIGNAGE INFORMATION TAKEN FROM THE SAYREVILLE BOROUGH, NJ CODE OF ORDINANCES SIGN SCHEDULE II

(V) VARIANCE FOR QUANTITY

FINISH SCHEDULE				
CODE	MATERIAL	MANUFACTURER	PRODUCT #	DESCRIPTION / REMARKS
<b>EXTERIOR WALL PAINT</b>				
PTE-02	PAINT	SHERWIN WILLIAMS	CHARCOAL FINISH	SW 7069 "IRON ORE"
<b>EXTERIOR FIBER-CEMENT CLADDING SYSTEMS</b>				
PP-01	FIBER-CEMENT CLADDING	NICHHA	CONCRETE FINISH INDUSTRIAL BLOCK EPO501F	COLOR: "CONCRETE" SURFACE: STAINCARD Dimension: 17.78"x11.91"x5/8" TRIM: NICHHA MTC-01 METAL TRIM COVER KEY COLOR: CLEAR ANODIZED DIMENSION 1/2" x 3/4" x 3/16" RETURNS
PP-04	FIBER-CEMENT CLADDING	NICHHA	OFF WHITE FINISH ILLUMINATION SERIES: ED980-G09 RWP 1918 SMOOTH	COLOR: "ELDER WHITE" TEXTURE / SURFACE: DIMENSION 17.78"x11.91"x5/8" TRIM: NICHHA RED20-G09
<b>EXTERIOR FIBER-CEMENT EXTERIOR SIDING AND PANELS</b>				
PS-02	FIBER CEMENT SIDING	JAMES HARDIE	CHARCOAL FINISH	COLOR: "IRON GRAY" SURFACE: HARDIE SIDING DIMENSION 7 1/4" x 12" x 5/8" THK WITH 6" SIDING EXPOSURE
PS-03	FIBER CEMENT SIDING	WOODTONE	WOOD FINISH RUSTIC SERIES WOODTONE	COLOR: "HONEY GLAZE" WOOD PATTERN SURFACE: WOOD PATTERN PLANK DIMENSION 7 1/4" x 12" x 5/8" THK WITH 6" SIDING EXPOSURE NOTE: NAILS TO MATCH WOOD FINISH
PS-04 LP	FIBER CEMENT PANEL	JAMES HARDIE	OFF WHITE FINISH LARGE FORMAT PANEL	COLOR: "GRAY SLATE" SURFACE: REVEAL PANEL DIMENSION (48"x96" PANEL)
PS-05	FIBER CEMENT SIDING	JAMES HARDIE	MID-TONE FINISH	COLOR: "GRAY SLATE" SURFACE: HARDIE SIDING DIMENSION 7 1/4" x 12" x 5/8" THK WITH 6" SIDING EXPOSURE
PS-05 LP	FIBER CEMENT PANEL	JAMES HARDIE	MID-TONE FINISH	COLOR: "GRAY SLATE" SURFACE: REVEAL PANEL DIMENSION (48"x96" PANEL)
<b>EXTERIOR METAL PAINTED COATINGS</b>				
PC-01	PAINTED COATING	SHERWIN WILLIAMS	CONCRETE FINISH	SW 7064 "PASSIVE WHITE"
	PAINTED COATING	POWDER COAT	CONCRETE FINISH	SW 7064 "PASSIVE WHITE"
	PAINTED COATING	MATTHEWS PAINT	CHARCOAL FINISH	COLOR: MP10269 DARK SLATE FINISH LVS SATIN V2.0
PC-02	PAINTED COATING	SHERWIN WILLIAMS	CHARCOAL FINISH	SW 7069 "IRON ORE"
	PAINTED COATING	POWDER COAT	CHARCOAL FINISH	SW 7069 "IRON ORE"
	PAINTED COATING	MATTHEWS PAINT	OFF WHITE FINISH	COLOR MATCH PMS 001 GREY 1C MAP ULTRA LOW V.O.C.
PC-04	PAINTED COATING	SHERWIN WILLIAMS	OFF WHITE FINISH	SW 7063 "NEBULOUS WHITE"
	PAINTED COATING	POWDER COAT	OFF WHITE FINISH	SW 7063 "NEBULOUS WHITE"
	PAINTED COATING	MATTHEWS PAINT	DD PINK FINISH	COLOR MATCH PMS 219 C COLOR: MP79206 R161426 FINISH: LVS SATIN V1.0 COVER: MP55986 WHITE BASECOAT
	PAINTED COATING	SHERWIN WILLIAMS	DD PINK FINISH	COLOR MATCH PMS 219 C
	PAINTED COATING	POWDER COAT	DD PINK FINISH	COLOR MATCH PMS 219 C
	PAINTED COATING	MATTHEWS PAINT	DD ORANGE FINISH	COLOR MATCH PMS 155C COLOR: MP79700 R161426 FINISH: LVS SATIN V1.0 COVER: MP55986 WHITE BASECOAT
PC-12	PAINTED COATING	MATTHEWS PAINT	DD PINK FINISH	COLOR MATCH PMS 219 C
	PAINTED COATING	SHERWIN WILLIAMS	DD PINK FINISH	COLOR MATCH PMS 219 C
	PAINTED COATING	POWDER COAT	DD PINK FINISH	COLOR MATCH PMS 219 C
PC-13	PAINTED COATING	SHERWIN WILLIAMS	DD ORANGE FINISH COLOR # 5255990	Blended At: Sherwin Williams Product Finishes, Lowell MA Product: LV3 - Genesis Low-VOC Stain G11039 Orange Toner 785.97g / 139g G1111 Low-VOC Clear Coat 329.21g / 122g G11043 Autumn Orange 194.94g / 65g G11011 Arctic White 137.20g / 132g G11088 Reducer 442.38g / 132g G11510 Low-VOC Flat Clear 2157.21g / 492g
	PAINTED COATING	POWDER COAT	DD ORANGE FINISH	COLOR MATCH PMS 155C
<b>EXTERIOR METAL TRIM</b>				
TR-04	METAL	TAMLYN	20CLP34) OUTSIDE CORNER TRIM USED AT TOWER ELEMENT	TO MATCH FIBER CEMENT LAP SIDING PS-03
TR-05	METAL	TAMLYN	(XS516) BOTTOM "STARTER" TRIM USED AT TOWER ELEMENT	CLEAR ANODIZED
TR-06	METAL	TAMLYN	(JM3-04) VERTICAL TERMINATION TRIM-TYP USED AT TOWER ELEMENT	FACTORY FINISH TO MATCH FIBER CEMENT LAP SIDING PS-03
TR-07	METAL	TAMLYN	(JM4716) TOP TRIM USED AT TOWER ELEMENT	FACTORY FINISH TO MATCH FIBER CEMENT LAP SIDING PS-03
TR-08	METAL	JAMES HARDIE	JH SURROUND VERTICAL TRIM	FINISH: FACTORY CLEAR ANODIZED 16 GA TRIM AVAILABLE IN 8'-0" LENGTHS. USED WITH JAMES HARDIE REVEAL PANELS
TR-10	METAL	JAMES HARDIE	JH SURROUND OUTSIDE CORNER TRIM	FINISH: FACTORY CLEAR ANODIZED 16 GA TRIM AVAILABLE IN 8'-0" LENGTHS. USED WITH JAMES HARDIE REVEAL PANELS
TR-11	METAL	JAMES HARDIE	JH SURROUND J-CHANNEL TRIM	FINISH: FACTORY CLEAR ANODIZED 16 GA TRIM AVAILABLE IN 8'-0" LENGTHS. USED WITH JAMES HARDIE REVEAL PANELS. NOTE: CAN BE USED VERTICALLY & HORIZONTALLY & PENETRATION OR TRANSITION WITH OTHER MATERIALS

36 Ames Avenue  
 Rutherford, NJ 07070  
 Tel. 201.896.0333  
 Fax. 201.896.9469  
 email@gkanda.biz

**gkanda** ARCHITECTS PC

Gary Kliesch and Associate Architects

Date: \_\_\_\_\_  
 Revisions: \_\_\_\_\_  
 No. \_\_\_\_\_

NJ: AI 13332  
 NY: 025618  
 FL: AR95782  
 WI: 11180-5  
 PA: RA-015112-B SC: 8935  
 D.C.: ARC101838 MA: 10610  
 GA: RA-013963 MI: 1301064135  
 VA: 401016373 IL: 001.023586  
 NC: 11736 WV: 4569 NH: 04487

Proposed:  
**DUNKIN'**  
 Block 368.07, Lots 1 & 2  
 2909 Washington Rd. & North Ernston Rd.  
 Sayreville, Middlesex County, NJ

Drawing Title:  
 PROPOSED ELEVATIONS

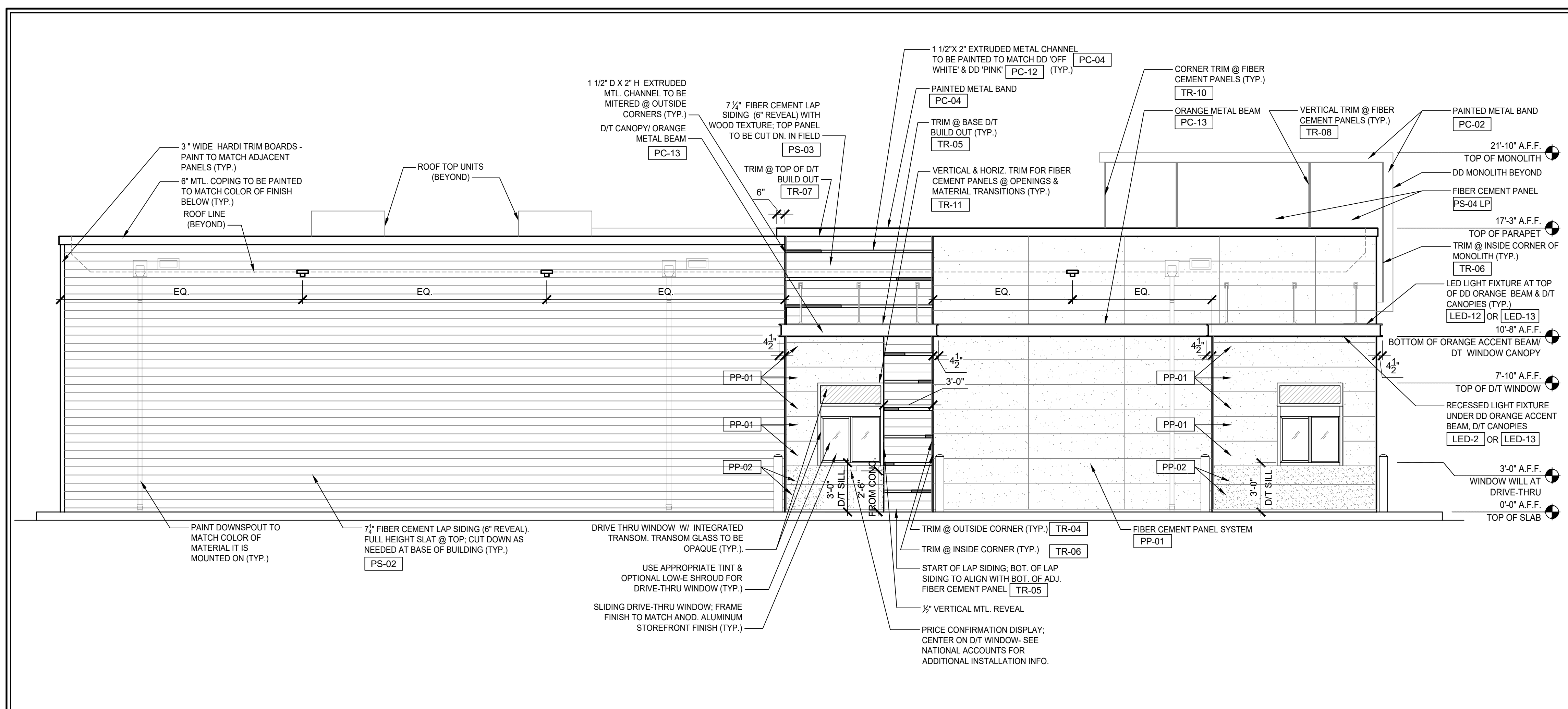
Date: 03/19/2020  
 Dwg No. \_\_\_\_\_  
 Drawn By: J.M.  
 Checked By: D.F.  
 Job No: 20-212  
 2 of 4

**A 2.0**

Exhibit A-9

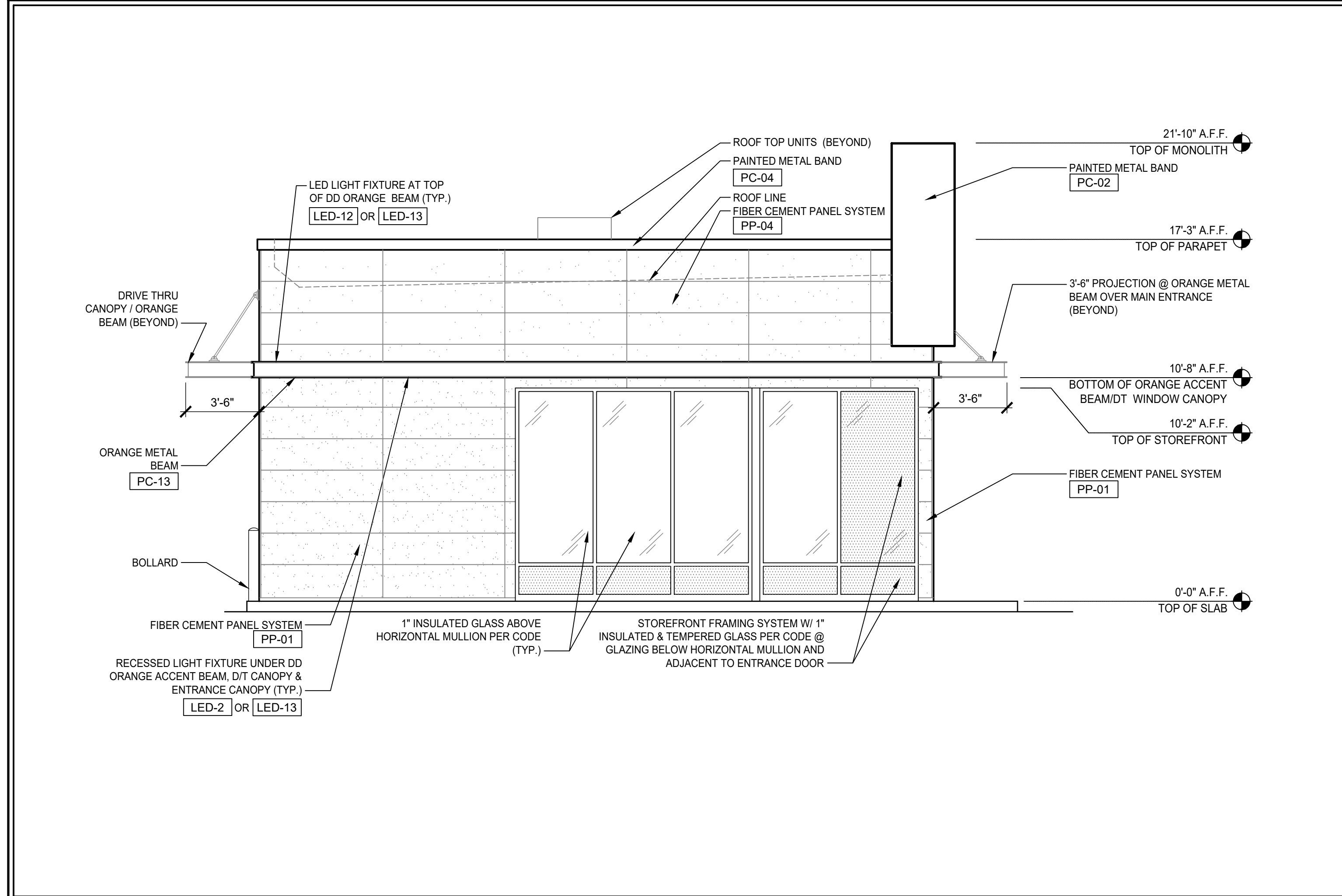
Copyright 2020 - gk+va Architects, PC





**1 EAST ELEVATION**

1/4" = 1'-0" NOTE:



**2 NORTH ELEVATION**

1/4" = 1'-0" NOTE:

**SIGNAGE DATA SCHEDULE**

DESCRIPTION	ALLOWED	PROPOSED	VARIANCE
<ul style="list-style-type: none"> <li>(2) BLDG. SIGN @ WEST ELEVATION (NORTH ERNSTON RD.) REFER TO DET. #7 &amp; #9/A-4.0</li> <li>PRIMARY SIGN "DUNKIN"</li> <li>SECONDARY SIGN "DRIVE THRU"</li> </ul>	<ul style="list-style-type: none"> <li>(1) SIGN - ONE SQ. FT. FOR EACH LINEAR FOOT OF BUILDING WIDTH OR 50 SQ. FT., WHICHEVER IS LESS</li> <li>BUILDING SIGNS ALSO INCLUDE CANOPY SIGNS FOR PURPOSES OF TOTAL CALCULATION OF SIGN AREA:</li> <li>TOTAL L.F. WALL: 80 L.F.</li> <li>TOTAL S.F. ALLOWED: 50 S.F. MAX</li> </ul>	<ul style="list-style-type: none"> <li>(1) "DUNKIN" = 22.3 S.F.</li> <li>BLDG. SIGN PROJECTION = 5"</li> <li>BLDG. SIGN HEIGHT ABOVE GRADE = 18'-3"</li> <li>(1) DRIVE THRU = 8.12 S.F.</li> <li>BLDG. SIGN PROJECTION = 5"</li> <li>BLDG. SIGN HEIGHT ABOVE GRADE = 14'-3"</li> <li>22.3 + 8.12 = 30.42 S.F.</li> </ul>	(V)
<ul style="list-style-type: none"> <li>(1) BLDG. SIGN @ SOUTH ELEVATION (WASHINGTON RD.) REFER TO DET. #8/A-4.0</li> <li>ACCENT SIGN "SAYVILLE RUNS ON DUNKIN"</li> </ul>	<ul style="list-style-type: none"> <li>(1) SIGN - ONE SQ. FT. FOR EACH LINEAR FOOT OF BUILDING WIDTH OR 50 SQ. FT., WHICHEVER IS LESS</li> <li>BUILDING SIGNS ALSO INCLUDE CANOPY SIGNS FOR PURPOSES OF TOTAL CALCULATION OF SIGN AREA:</li> <li>TOTAL L.F. WALL: 31.75 L.F.</li> <li>TOTAL S.F. ALLOWED: 31.75 S.F. MAX</li> </ul>	<ul style="list-style-type: none"> <li>(1) SAYVILLE RUNS ON DUNKIN" = 8.7 S.F.</li> <li>BLDG. SIGN HEIGHT ABOVE GRADE = 10'-1 1/2"</li> </ul>	(NO)
<ul style="list-style-type: none"> <li>(1) MONUMENT SIGN REFER TO DET. #6/A-4.0</li> <li>"DUNKIN DRIVE THRU"</li> </ul>	<ul style="list-style-type: none"> <li>(1) SANDWICH SIGN</li> <li>TOTAL S.F. ALLOWED: 6 SF</li> <li>MAX. HEIGHT: 4 FT</li> </ul>	<ul style="list-style-type: none"> <li>(1) MONUMENT SIGN "DUNKIN DRIVE THRU" (DOUBLE SIDED)</li> <li>TOTAL SIGN AREA = 12 S.F. (V)</li> <li>SIGN HEIGHT = 4'-11"(V)</li> </ul>	(V)

**NOTES**

- 1) ZONE: B-2 - GENERAL BUSINESS
  - 2) SIGNAGE INFORMATION TAKEN FROM THE SAYVILLE BOROUGH, NJ CODE OF ORDINANCES SIGN SCHEDULE II
- (V) VARIANCE FOR QUANTITY

**FINISH SCHEDULE**

EXTERIOR WALL PAINT				
CODE	MATERIAL	MANUFACTURER	PRODUCT #	DESCRIPTION / REMARKS
PTE-02	PAINT	SHERWIN WILLIAMS	CHARCOAL FINISH	SW 7069 "IRON ORE"
EXTERIOR FIBER-CEMENT CLADDING SYSTEMS				
CODE	MATERIAL	MANUFACTURER	PRODUCT #	DESCRIPTION / REMARKS
PP-01	FIBER-CEMENT CLADDING	NICHHA	CONCRETE FINISH INDUSTRIAL BLOCK EPO501F	COLOR: "CONCRETE" SURFACE: STANDARD Dimension: 17.78"x11.91"x0.78" TRIM: NICHHA MITC-01 METAL TRIM CORNER KEY COLOR: CLEAR ANODIZED DIMENSION 10'-0" X 3'-1/2" RETURNS
PP-04	FIBER-CEMENT CLADDING	NICHHA	OFF WHITE FINISH ILLUMINATION SERIES: ED080-G29 RWP 1918 SMOOTH	COLOR: "ELDER WHITE" TEXTURE / SURFACE: DIMENSION 17.78"x11.91"x0.78" TRIM: NICHHA RED202-G09
EXTERIOR FIBER-CEMENT EXTERIOR SIGN/MAN PANELS				
CODE	MATERIAL	MANUFACTURER	PRODUCT #	DESCRIPTION / REMARKS
PS-02	FIBER CEMENT SIDING	JAMES HARDIE	CHARCOAL FINISH	COLOR: "IRON GRAY" SURFACE: HARDIE SIDING DIMENSION 7 1/4" X 12" X 5/8" THK WITH 6" SIDING EXPOSURE
PS-03	FIBER CEMENT SIDING	WOODTONE	WOOD FINISH RUSTIC SERIES WOODTONE	COLOR: "HONEY GLAZE" WOOD PATTERN SURFACE: WOOD PATTERN PLANK DIMENSION 7 1/4" X 12" X 5/8" THK WITH 6" SIDING EXPOSURE NOTE: NAILS TO MATCH WOOD FINISH
PS-04 LP	FIBER CEMENT PANEL	JAMES HARDIE	OFF WHITE FINISH LARGE FORMAT PANEL	COLOR: "COBBLESTONE" SURFACE: REVEAL PANEL DIMENSION 48"X96" PANEL
PS-05	FIBER CEMENT SIDING	JAMES HARDIE	MID-TONE FINISH	COLOR: "GRAY SLATE" SURFACE: HARDIE SIDING DIMENSION 7 1/4" X 12" X 5/8" THK WITH 6" SIDING EXPOSURE
PS-05 LP	FIBER CEMENT PANEL	JAMES HARDIE	MID-TONE FINISH	COLOR: "GRAY SLATE" SURFACE: REVEAL PANEL DIMENSION 48"X96" PANEL
EXTERIOR METAL PAINTED COATINGS				
CODE	MATERIAL	MANUFACTURER	PRODUCT #	DESCRIPTION / REMARKS
PC-01	PAINTED COATING	SHERWIN WILLIAMS	CONCRETE FINISH	SW 7064 "PASSIVE WHITE"
	PAINTED COATING	POWDER COAT	CONCRETE FINISH	SW 7064 "PASSIVE WHITE"
PC-02	PAINTED COATING	MATTHEWS PAINT	CHARCOAL FINISH	COLOR: MP10269 DARK SLATE FINISH LVS SATIN V2.0
	PAINTED COATING	SHERWIN WILLIAMS	CHARCOAL FINISH	SW 7069 "IRON ORE"
	PAINTED COATING	POWDER COAT	CHARCOAL FINISH	SW 7069 "IRON ORE"
PC-04	PAINTED COATING	MATTHEWS PAINT	OFF WHITE FINISH	COLOR MATCH PMS 001 GREY 1C MP ULTRA LOW V.O.C.
	PAINTED COATING	SHERWIN WILLIAMS	OFF WHITE FINISH	SW 7063 "NEBULOUS WHITE"
	PAINTED COATING	POWDER COAT	OFF WHITE FINISH	SW 7063 "NEBULOUS WHITE"
PC-12	PAINTED COATING	MATTHEWS PAINT	DD PINK FINISH	COLOR MATCH PMS 219 C COLOR: MP79206 R161426 FINISH: LVS SATIN V1.0 COVER: MP55986 WHITE BASECOAT
	PAINTED COATING	SHERWIN WILLIAMS	DD PINK FINISH	COLOR MATCH PMS 219 C
	PAINTED COATING	POWDER COAT	DD PINK FINISH	COLOR MATCH PMS 219 C
PC-13	PAINTED COATING	MATTHEWS PAINT	DD ORANGE FINISH	COLOR MATCH PMS 155C COLOR: MP79700 R161426 FINISH: LVS SATIN V1.0 COVER: MP55986 WHITE BASECOAT
	PAINTED COATING	SHERWIN WILLIAMS	DD ORANGE FINISH COLOR # 5595990	Blended At: Sherwin Williams Product Colors: Lowell MA Product: LV3 - Genesis Low-VOC Stain G1109 Orange Toner 785.97g / 13gal G1111 Low-VOC Clear Coat 239.71g / 12gal G11043 Autumn Orange 194.04g / 05gal G11011 Arctic White 197.20g / 02gal G11088 Reducer 442.38g / 13gal G11510 Low-VOC Flat Clear 2157.21g / 49gal
	PAINTED COATING	POWDER COAT	DD ORANGE FINISH	COLOR MATCH PMS 155C
EXTERIOR METAL TRIM				
CODE	MATERIAL	MANUFACTURER	PRODUCT #	DESCRIPTION / REMARKS
TR-04	METAL	TAMLYN	2XOCLP34) OUTSIDE CORNER TRIM. USED AT TOWER ELEMENT	TO MATCH FIBER CEMENT LAP SIDING PS-03
TR-05	METAL	TAMLYN	(X5516) BOTTOM "STARTER" TRIM. USED AT TOWER ELEMENT	CLEAR ANODIZED
TR-06	METAL	TAMLYN	(JM4) VERTICAL TERMINATION TRIM-TYP. USED AT TOWER ELEMENT	FACTORY FINISH TO MATCH FIBER CEMENT LAP SIDING PS-03
TR-07	METAL	TAMLYN	(JM4716) TOP TRIM USED AT TOWER ELEMENT	FACTORY FINISH TO MATCH FIBER CEMENT LAP SIDING PS-03
TR-08	METAL	JAMES HARDIE	JH SURROUND VERTICAL TRIM	FINISH: FACTORY CLEAR ANODIZED 16 GA TRIM AVAILABLE IN 8'-0" LENGTHS. USED WITH JAMES HARDIE REVEAL PANELS
TR-10	METAL	JAMES HARDIE	JH SURROUND OUTSIDE CORNER TRIM	FINISH: FACTORY CLEAR ANODIZED 16 GA TRIM AVAILABLE IN 8'-0" LENGTHS. USED WITH JAMES HARDIE REVEAL PANELS
TR-11	METAL	JAMES HARDIE	JH SURROUND L-CHANNEL TRIM	FINISH: FACTORY CLEAR ANODIZED 16 GA TRIM AVAILABLE IN 8'-0" LENGTHS. USED WITH JAMES HARDIE REVEAL PANELS. NOTE: CAN BE USED VERTICALLY & HORIZONTALLY @ PENETRATION OR TRANSITION W/ OTHER MATERIALS

36 Ames Avenue  
Rutherford, NJ 07070  
Tel. 201.896.0333  
Fax. 201.896.9469  
email@gkanda.biz



Rev.	Date	Revisions

NJ: AI 13332  
NY: 025618  
FL: AR95782  
WI: 11180-5  
PA: RA-015112-B SC, 8935  
D.C.: ARC101838 MA:10610  
GA: RA 013963 MI: 1301064135  
VA: 401016373 IL: 001.023586  
NC: 11736 WV: 4569 NH: 04487

**Gary Kliesch**  
A.I.A., N.A.A.S.P., N.C.I.B.

Proposed:

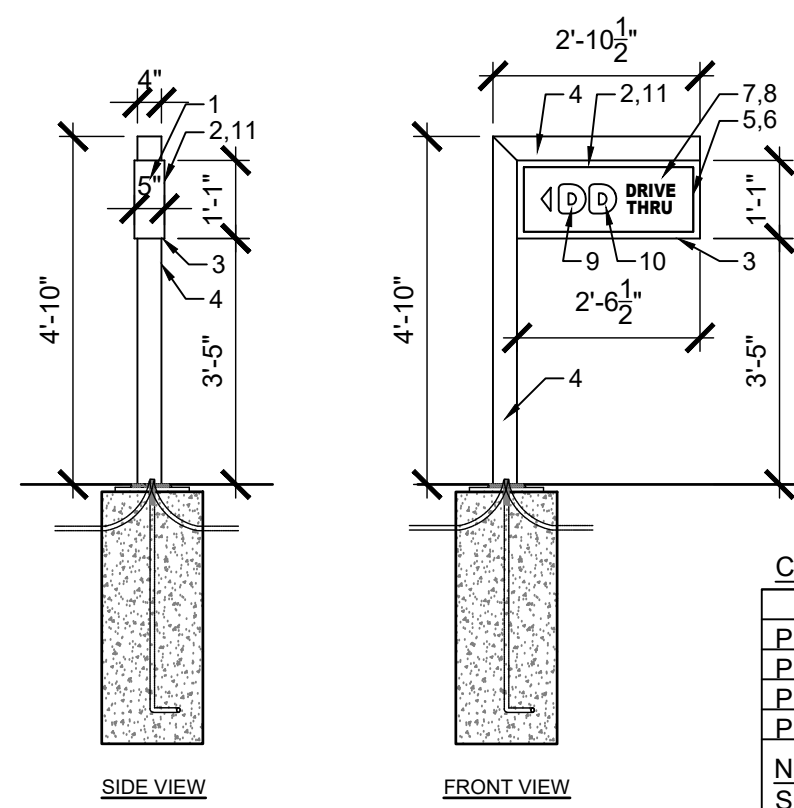
**DUNKIN'**

Block 368.07, Lots 1 & 2  
2909 Washington Rd. & North Ermonston Rd.  
Sayreville, Middlesex County, NJ

Drawing Title:  
PROPOSED ELEVATIONS

Date: 03/19/2020  
Dwg No. A 3.0  
Drawn By: J.M.  
Checked By: D.F.  
Job No: 20-212  
3 of 4

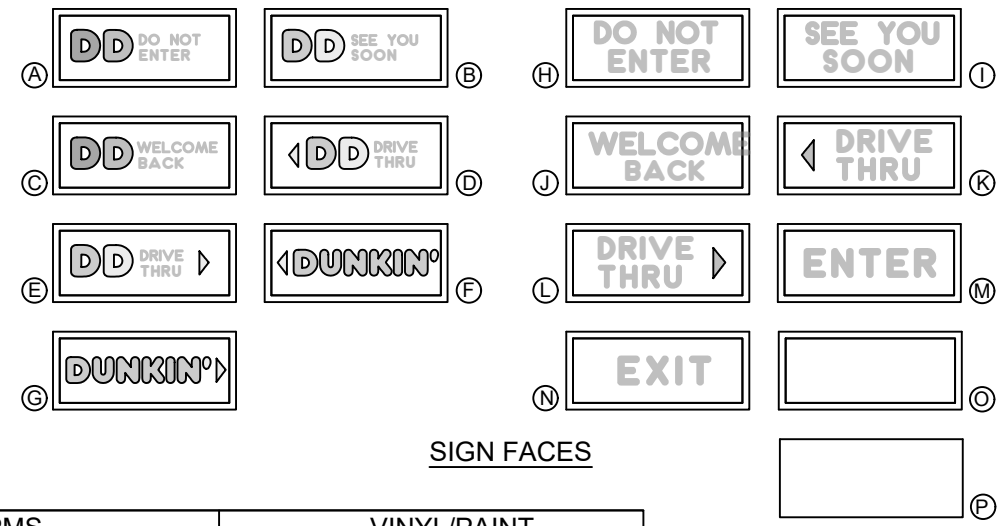




**COLORS:**

PMS	VINYL PAINT
PMS 165 DD ORANGE	TRANS 3M #3630-3123
PMS 219 DD PINK	TRANS 3M #3630-1379
PMS 7540C DD GRAY	TRANS 3M #7725-41
PMS COOL GRAY 1C	TRANS 3M #7725-11

**NOTE:** SEE DUNKIN' BRANDS WEBSITE, <http://extranet.dunkinbrands.com>, FOR COMPLETE INFORMATION AND DETAILS



**SIGNAGE BOX AREA: 2.75 SQ. FT.**  
**LED ILLUMINATED DIRECTIONAL SIGN**

**NOTES:**

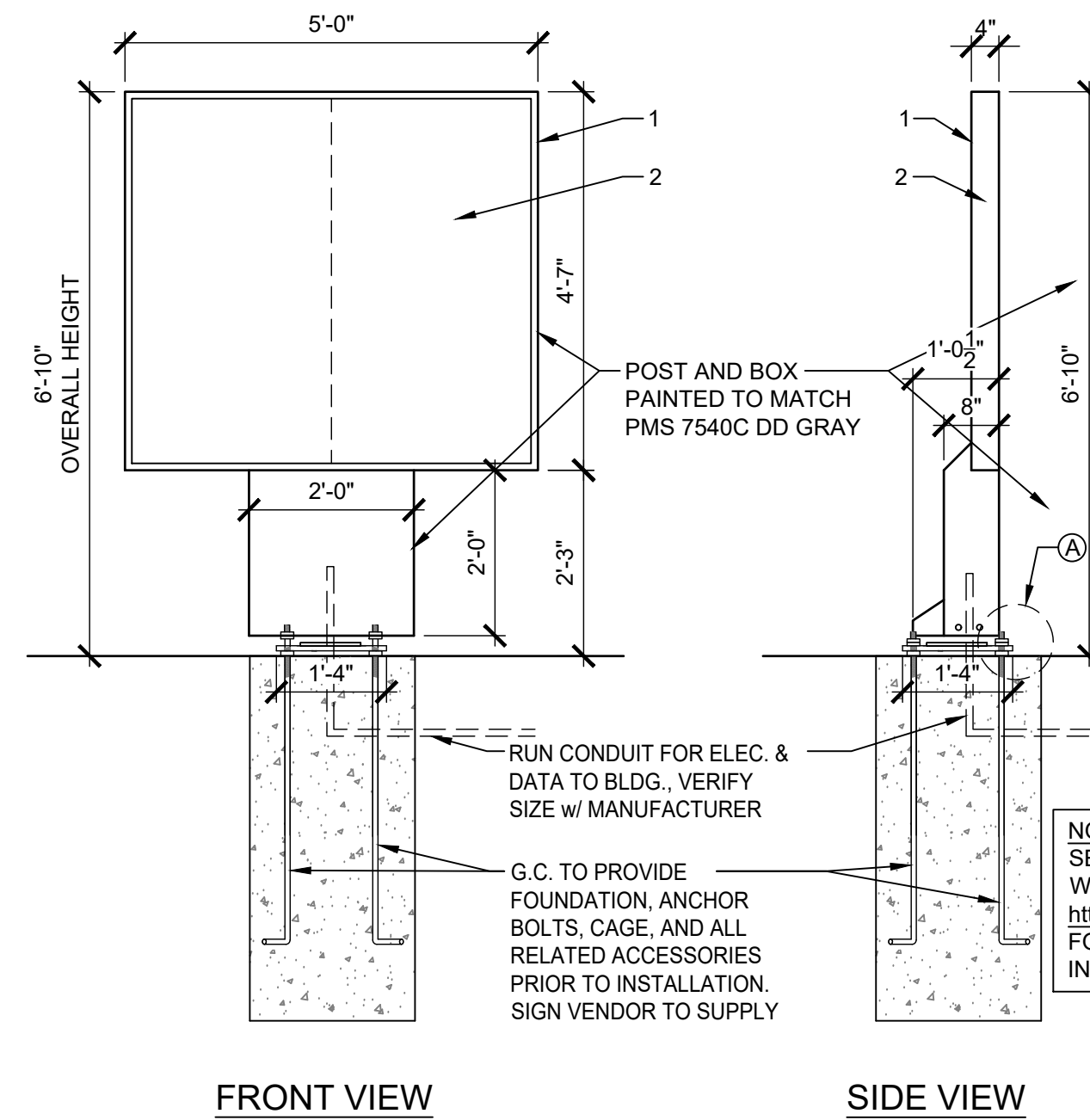
- 5" x 1" x .063" ALUMINUM SPACE FRAME.
- 1" ALUMINUM RETAINER.
- 1" x 1" x 1/8" ALUMINUM ANGLE.
- 4" x 4" x .075" SQUARE TUBE SUPPORT PAINTED ORANGE PMS 165C
- GE TETRA MAX 7100K WHITE LED'S. (OR GE REPLACEMENT EQUIVALENT).
- LED POWER SUPPLIES, AS REQUIRED.
- 118" CLEAR SOLAR GRADE POLYCARBONATE FACE 2ND SURFACE.
- BACKGROUND COLOR TO BE 403 WHITE BACK-SPRAY.
- 3M #3630-3123 DUNKIN' PINK TRANSLUCENT FILM 2ND SURFACE.
- 3M #3630-1379 DUNKIN' PINK TRANSLUCENT FILM 2ND SURFACE.
- 3M #7125-41 DUNKIN' GRAY TRANSLUCENT FILM 2ND SURFACE.

**ADDITIONAL NOTES:**

- ARTWORK FONT: DUNKIN SANS DISPLAY
- EXTERIOR FINISH: PAINT PANTONE 7540C
- INTERIOR FINISH: PAINTED REFLECTIVE WHITE
- RETAINERS / FACE REMOVABLE FOR SERVICE ACCESS
- ELECTRICAL: (1) 20-AMP / 120 VOLT CIRCUIT U.L. LISTED

**1 DIRECTIONAL SIGN DETAILS**

3/8" = 1'-0" NOTE:



**MULTIPLE PANEL DIGITAL MENU BOARDS**

**NOTES:**

- MENUBOARD IS POWDER COATED TO MATCH PMS 7540C (CABINET, BASE CLADDING, DOOR FRAMES & EXTENDER FRAMES).
- SAMSUNG OHF SERIES DISPLAY MENUBOARDS, OHF55F - 55".

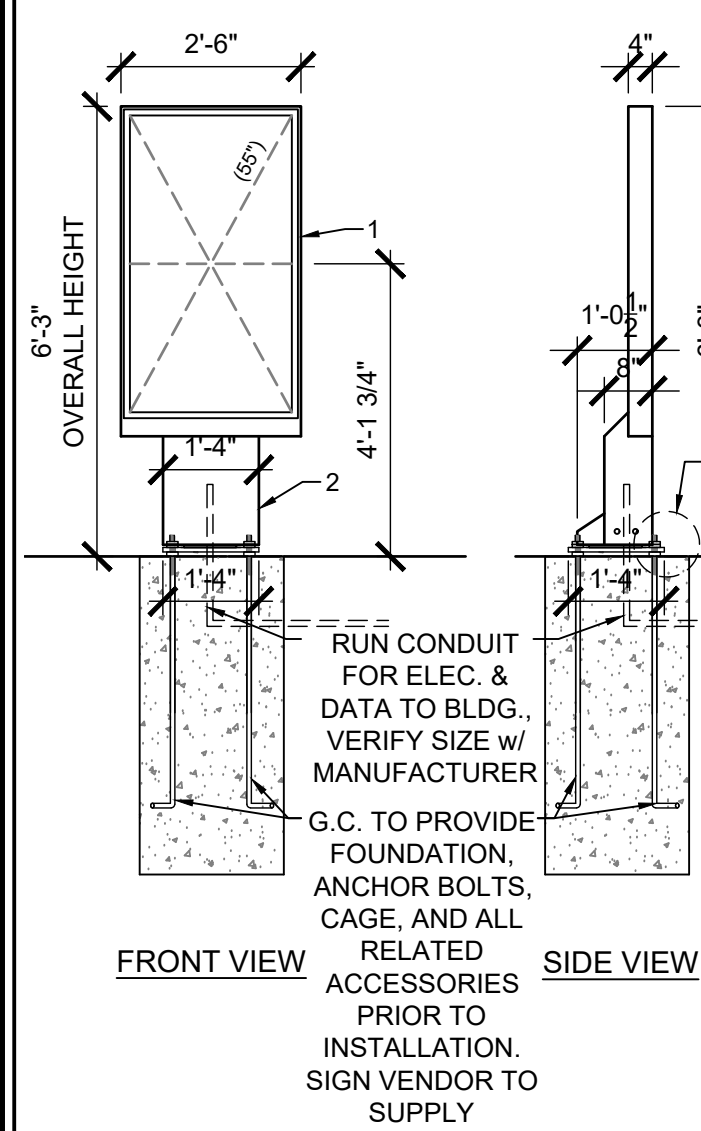
**ADDITIONAL NOTES:**

- ARTWORK FONT: DUNKIN SANS DISPLAY

**NOTE:** SEE DUNKIN' BRANDS WEBSITE, <http://extranet.dunkinbrands.com>, FOR COMPLETE INFORMATION AND DETAILS

**2 DIGITAL MENU BOARD**

1/2" = 1'-0" NOTE:



**DIGITAL PREVIEW BOARD**

**NOTES:**

- PREVIEW BOARD IS POWDER COATED TO MATCH PMS 7540C (CABINET, BASE CLADDING, DOOR FRAMES & EXTENDER FRAMES).
- ACCESS COVER TO MEDIA PLAYER(S), ROUTER AND ELECTRICAL RECEPTACLES SECURED BY SECURITY HARDWARE.

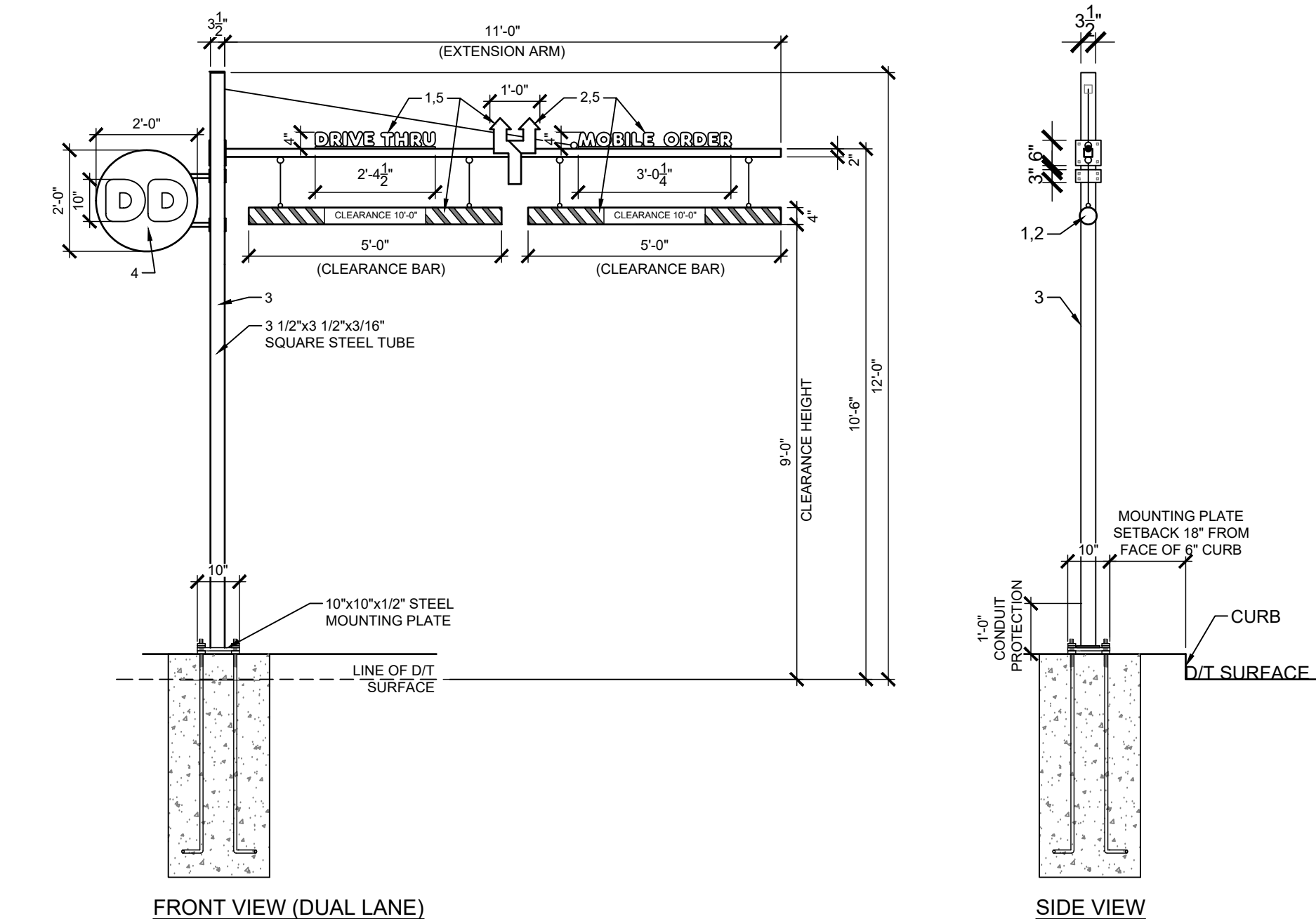
**ADDITIONAL NOTES:**

- ARTWORK FONT: DUNKIN SANS DISPLAY
- MATERIALS: 22GA GALVANNEEL STEEL, ALUMINUM EXTRUSION
- ACCESS: HINGED REAR DOOR FASTENED BY SECURITY HARDWARE

**NOTE:** SEE DUNKIN' BRANDS WEBSITE, <http://extranet.dunkinbrands.com>, FOR COMPLETE INFORMATION AND DETAILS

**3 DIGITAL PREVIEW BOARD**

3/8" = 1'-0" NOTE:



**NON-ILLUMINATED DRIVE-THRU STRUCTURE**

**NOTES:**

- PAINT TO MATCH ORANGE PMS 165C, GLOSS FINISH.
- PAINT TO MATCH PINK PMS 219C, GLOSS FINISH.
- PAINT TO MATCH PMS COOL GRAY 1C, GLOSS FINISH.
- OPTIONAL 24" x 24" MEDALLION SIGN WITH REMOVABLE / ADJUSTABLE PLATES, SINGLE SIDED VINYL.
- OPTIONAL REFLECTIVE FILM: 3M LUS80CR-10 SCOTCHLITE REFLECTIVE MCS (LATEX OR SOLVENT INKS) 8519 LUSTER PROTECTIVE LAMINATE PRINTED TO MATCH.

**COLORS:**

PMS	VINYL PAINT
PMS 165 DUNKIN' ORANGE	TRANS 3M #3630-3123
PMS 219 DUNKIN' PINK	TRANS 3M #3630-1379
PMS 7540C DUNKIN' GRAY	TRANS 3M #7725-41
PMS COOL GRAY 1C	TRANS 3M #7725-11

**NOTE:** SEE DUNKIN' BRANDS WEBSITE, <http://extranet.dunkinbrands.com>, FOR COMPLETE INFORMATION AND DETAILS

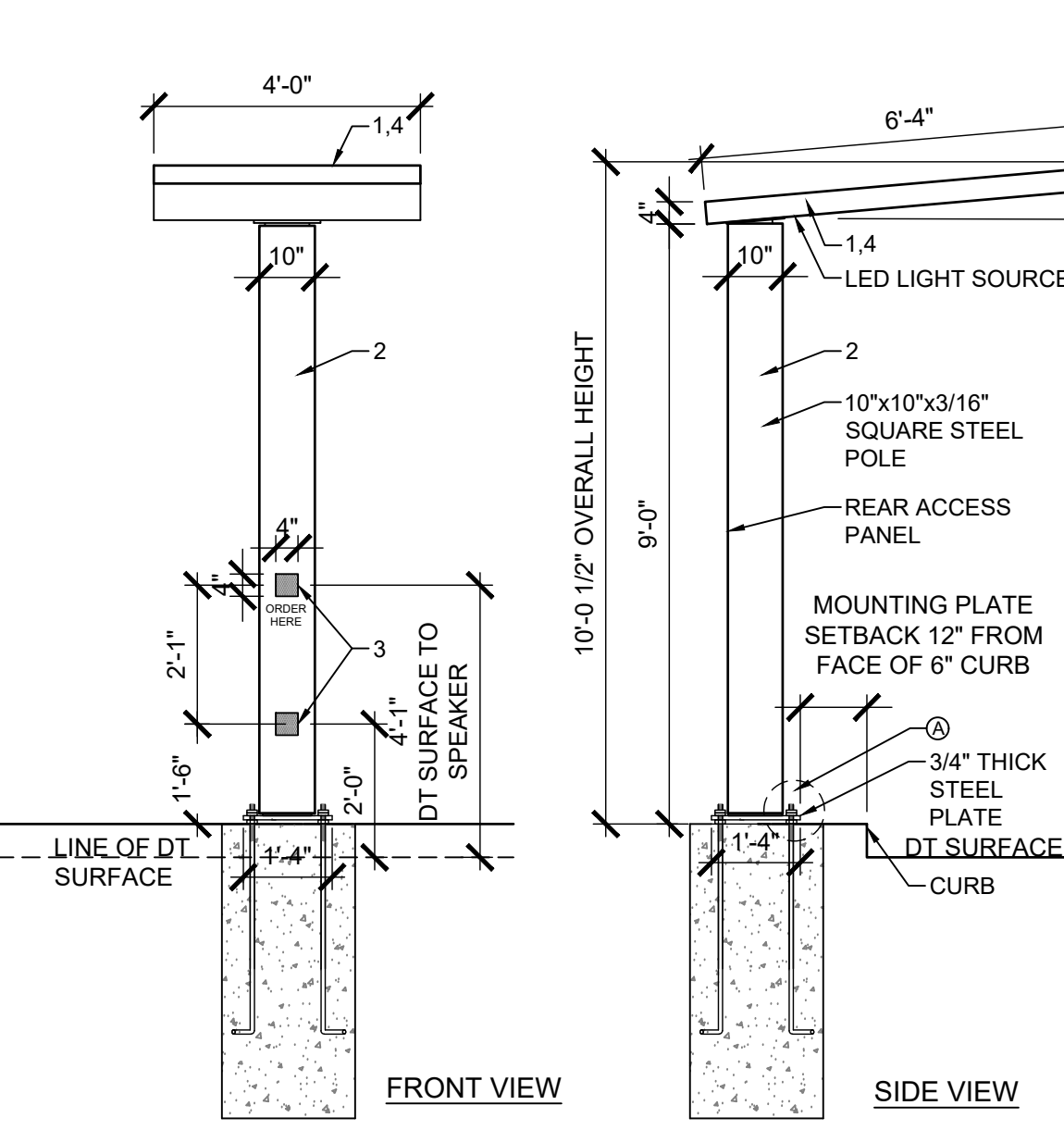
**ADDITIONAL NOTES:**

- ARTWORK FONT: DUNKIN SANS DISPLAY
- 120 VOLT CIRCUIT, TO BE CONFIRMED BY SITE
- CLEARANCE TO BE CONFIRMED BY SITE

**NOTE:** INSTALLER MUST BE SURE TO SHIM CANOPY PLATE AT BOTTOM, AND ADJUST ANCHOR BOLTS AT BOTTOM OF COLUMN SO THAT THE CANOPY SITS WITH A 1/8" / FT FALL FROM OPEN SIDE TO POLE SIDE SO WATER WILL DRAIN OFF POLE SIDE.

**4 DUAL VEHICLE CLEARANCE BAR DETAIL**

3/8" = 1'-0" NOTE:



**ILLUMINATED DRIVE-THRU CANOPY SIGN**

**NOTES:**

- PAINT TO MATCH ORANGE PMS 165C, GLOSS FINISH.
- PAINT TO MATCH PMS COOL GRAY 1C, GLOSS FINISH.
- BLACK VINYL, ARLON 2100-03, MIC BY OTHERS.
- BREAKAWAY SWIVEL TOP.

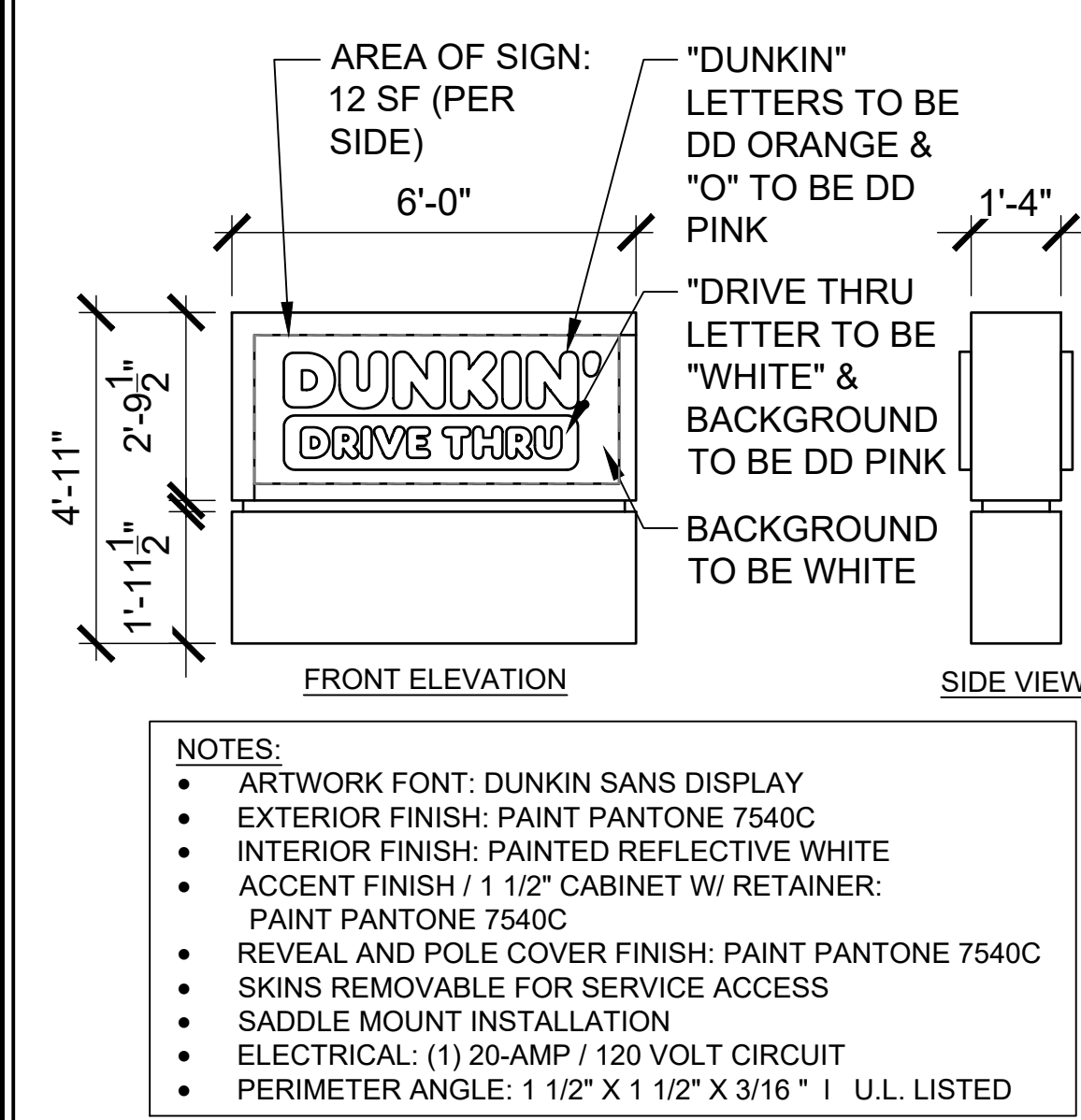
**ADDITIONAL NOTES:**

- ARTWORK FONT: DUNKIN SANS DISPLAY
- 120 VOLT CIRCUIT, TO BE CONFIRMED BY SITE
- CLEARANCE TO BE CONFIRMED BY SITE
- TOP HAS TWO DOWN LIGHTS

**NOTE:** SEE DUNKIN' BRANDS WEBSITE, <http://extranet.dunkinbrands.com>, FOR COMPLETE INFORMATION AND DETAILS

**5 ORDER CANOPY**

3/8" = 1'-0" NOTE:

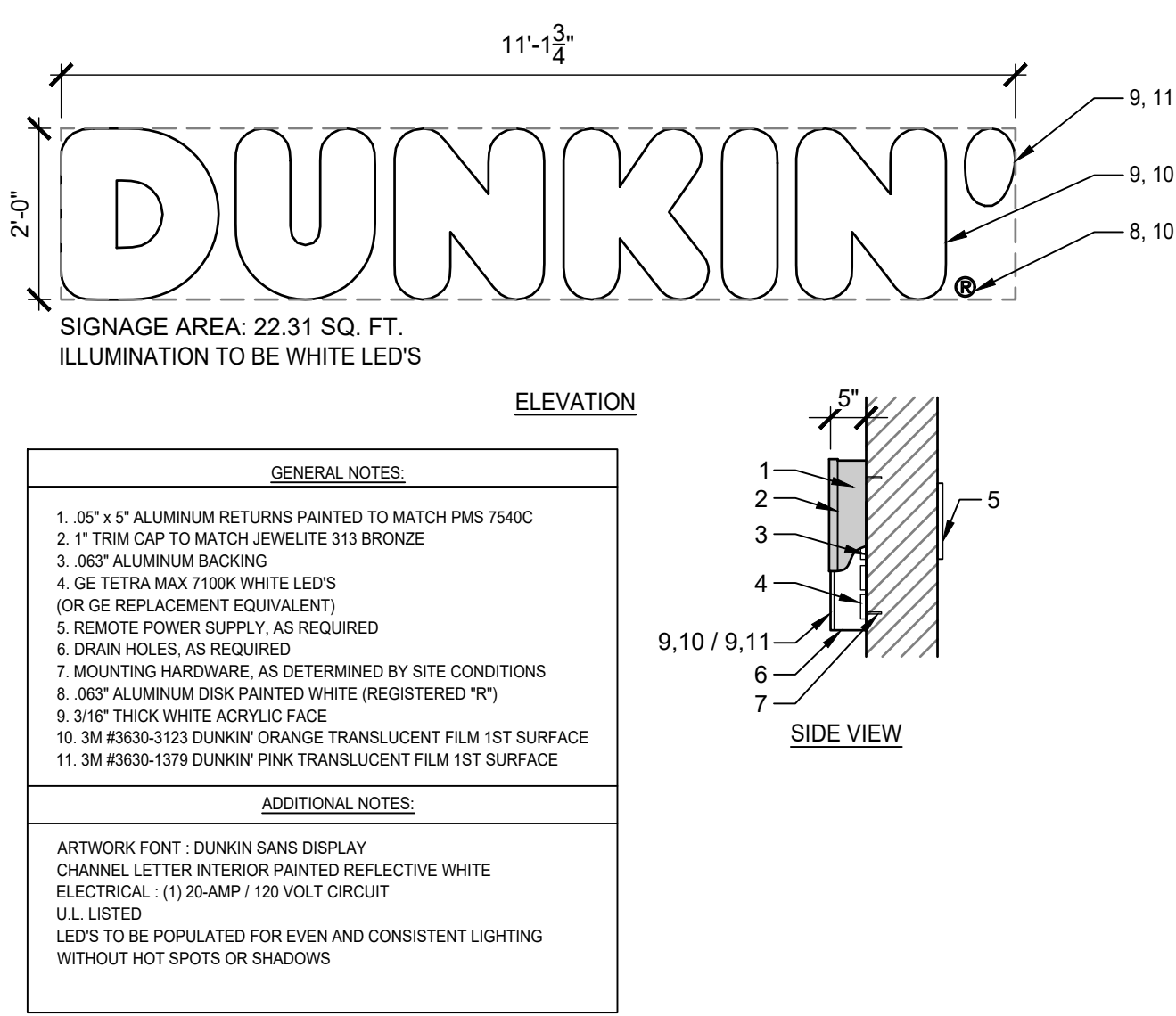


**NOTES:**

- ARTWORK FONT: DUNKIN SANS DISPLAY
- EXTERIOR FINISH: PAINT PANTONE 7540C
- INTERIOR FINISH: PAINTED REFLECTIVE WHITE
- ACCENT FINISH / 1/2" CABINET W/ RETAINER: PAINT PANTONE 7540C
- REVEAL AND POLE COVER FINISH: PAINT PANTONE 7540C
- SKINS REMOVABLE FOR SERVICE ACCESS
- SADDLE MOUNT INSTALLATION
- ELECTRICAL: (1) 20-AMP / 120 VOLT CIRCUIT
- PERIMETER ANGLE: 1 1/2" X 1 1/2" X 3/16" 1 U.L. LISTED

**6 MONUMENT SIGN DETAIL**

3/8" = 1'-0" NOTE:



**SIGNAGE AREA: 22.31 SQ. FT.**  
**ILLUMINATION TO BE WHITE LED'S**

**GENERAL NOTES:**

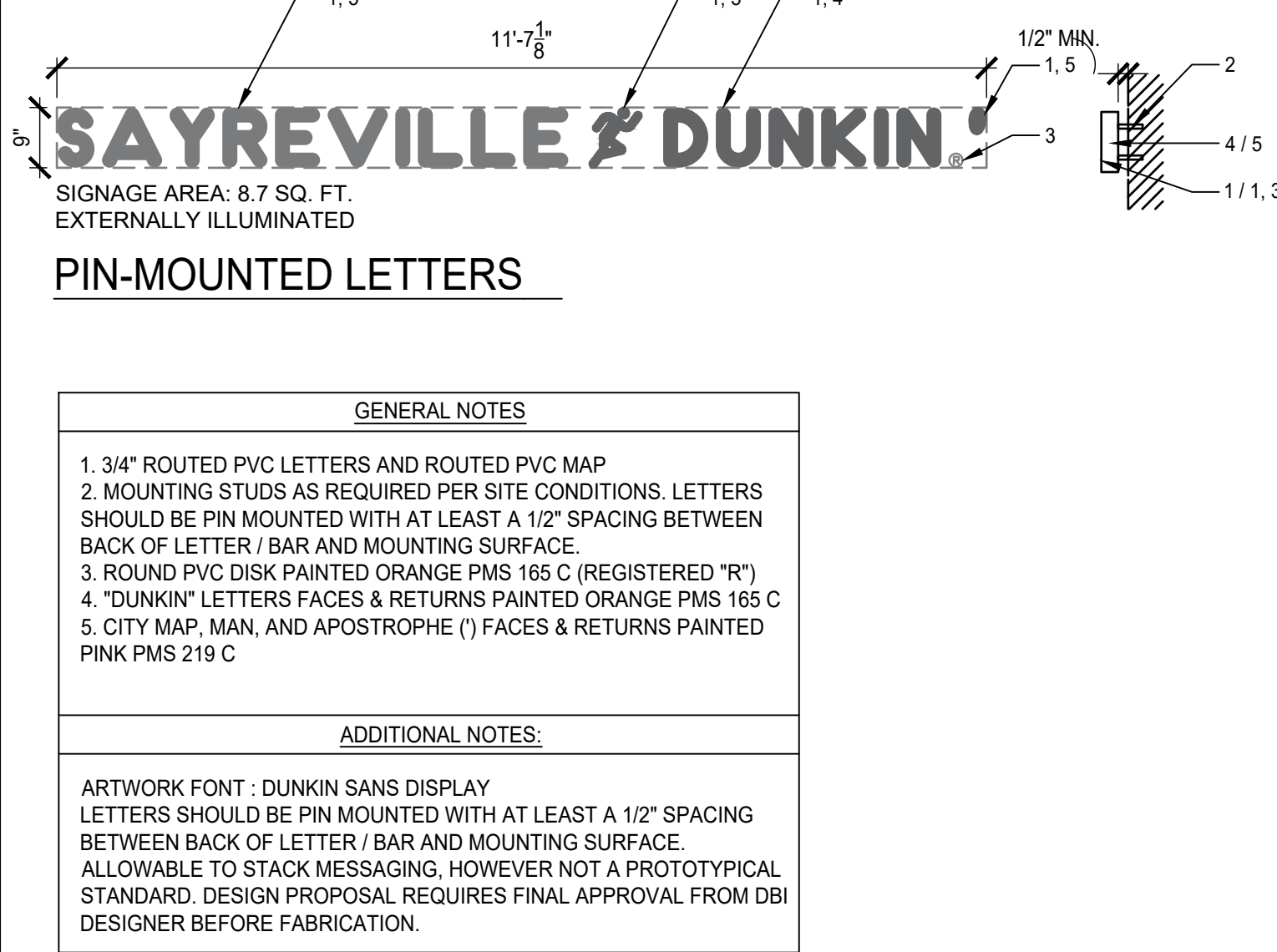
- .05" x 5" ALUMINUM RETURNS PAINTED TO MATCH PMS 7540C
- 1" TRIM CAP TO MATCH JEWELITE 313 BRONZE
- .063" ALUMINUM BACKING
- GE TETRA MAX 7100K WHITE LED'S (OR GE REPLACEMENT EQUIVALENT)
- REMOTE POWER SUPPLY, AS REQUIRED
- DRAIN HOLES, AS REQUIRED
- MOUNTING HARDWARE, AS DETERMINED BY SITE CONDITIONS
- .063" ALUMINUM DISK PAINTED WHITE (REGISTERED 'R')
- 3/16" THICK WHITE ACRYLIC FACE
- 3M #3630-1379 DUNKIN' PINK TRANSLUCENT FILM 1ST SURFACE
- 3M #3630-3123 DUNKIN' ORANGE TRANSLUCENT FILM 1ST SURFACE
- 3M #3630-1379 DUNKIN' PINK TRANSLUCENT FILM 1ST SURFACE

**ADDITIONAL NOTES:**

- ARTWORK FONT: DUNKIN SANS DISPLAY
- CHANNEL LETTER INTERIOR PAINTED REFLECTIVE WHITE
- ELECTRICAL: (1) 20-AMP / 120 VOLT CIRCUIT U.L. LISTED
- LED'S TO BE POPULATED FOR EVEN AND CONSISTENT LIGHTING WITHOUT HOT SPOTS OR SHADOWS

**7 BUILDING SIGN DETAIL**

3/8" = 1'-0" NOTE:



**SIGNAGE AREA: 8.7 SQ. FT.**  
**EXTERNALLY ILLUMINATED**

**PIN-MOUNTED LETTERS**

**GENERAL NOTES:**

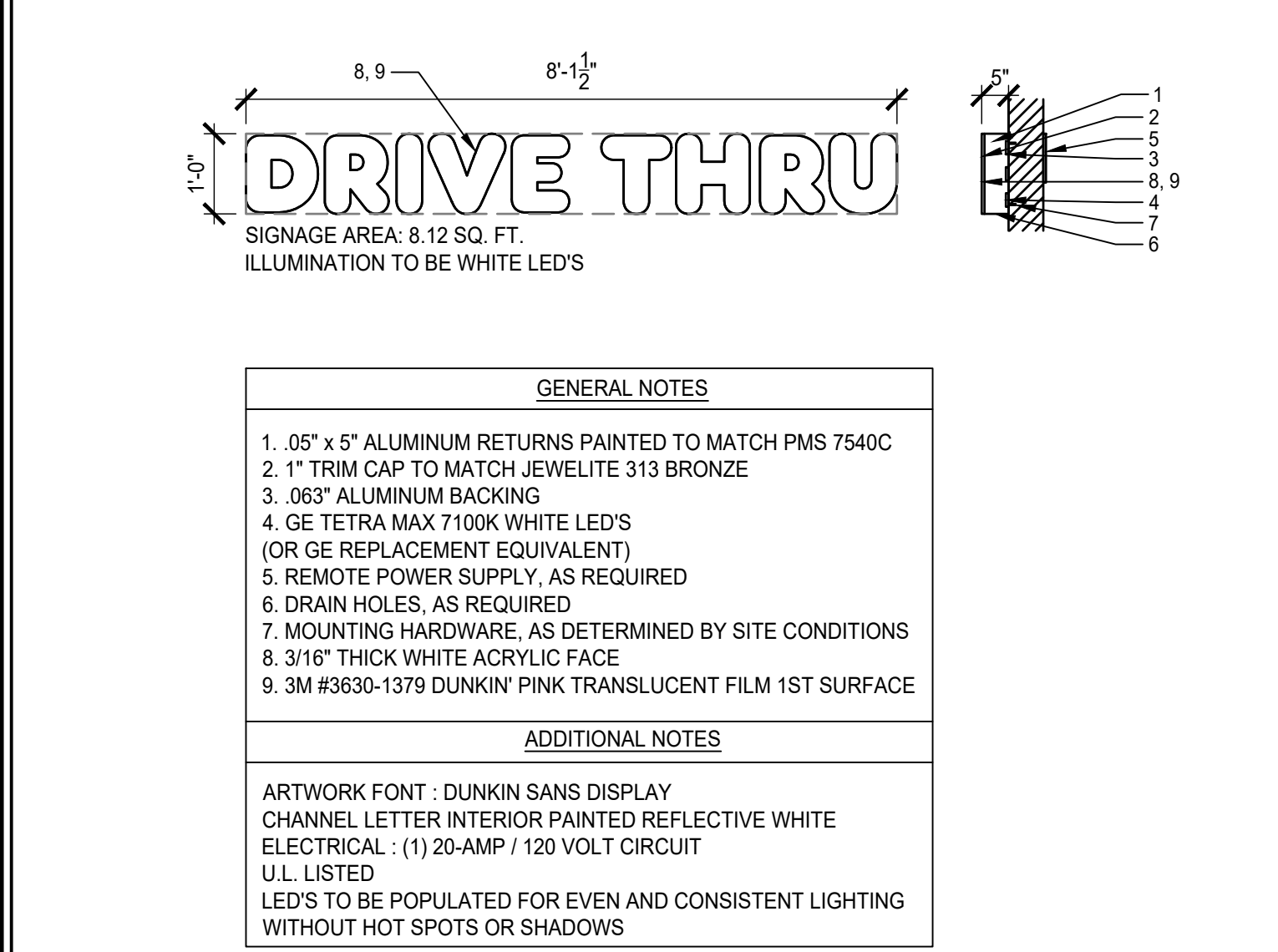
- 3/4" ROUTED PVC LETTERS AND ROUTED PVC MAP
- MOUNTING STUDS AS REQUIRED PER SITE CONDITIONS. LETTERS SHOULD BE PIN MOUNTED WITH AT LEAST A 1/2" SPACING BETWEEN BACK OF LETTER / BAR AND MOUNTING SURFACE.
- ROUND PVC DISK PAINTED ORANGE PMS 165 C (REGISTERED 'R')
- 'DUNKIN' LETTERS FACES & RETURNS PAINTED ORANGE PMS 165 C
- CITY MAP, MAN, AND APOSTROPHE (') FACES & RETURNS PAINTED PINK PMS 219 C

**ADDITIONAL NOTES:**

- ARTWORK FONT: DUNKIN SANS DISPLAY
- LETTERS SHOULD BE PIN MOUNTED WITH AT LEAST A 1/2" SPACING BETWEEN BACK OF LETTER / BAR AND MOUNTING SURFACE.
- ALLOWABLE TO STACK MESSAGING, HOWEVER NOT A PROTOTYPICAL STANDARD. DESIGN PROPOSAL REQUIRES FINAL APPROVAL FROM DBI DESIGNER BEFORE FABRICATION.

**8 BUILDING SIGN DETAIL**

3/8" = 1'-0" NOTE:



**SIGNAGE AREA: 8.12 SQ. FT.**  
**ILLUMINATION TO BE WHITE LED'S**

**GENERAL NOTES:**

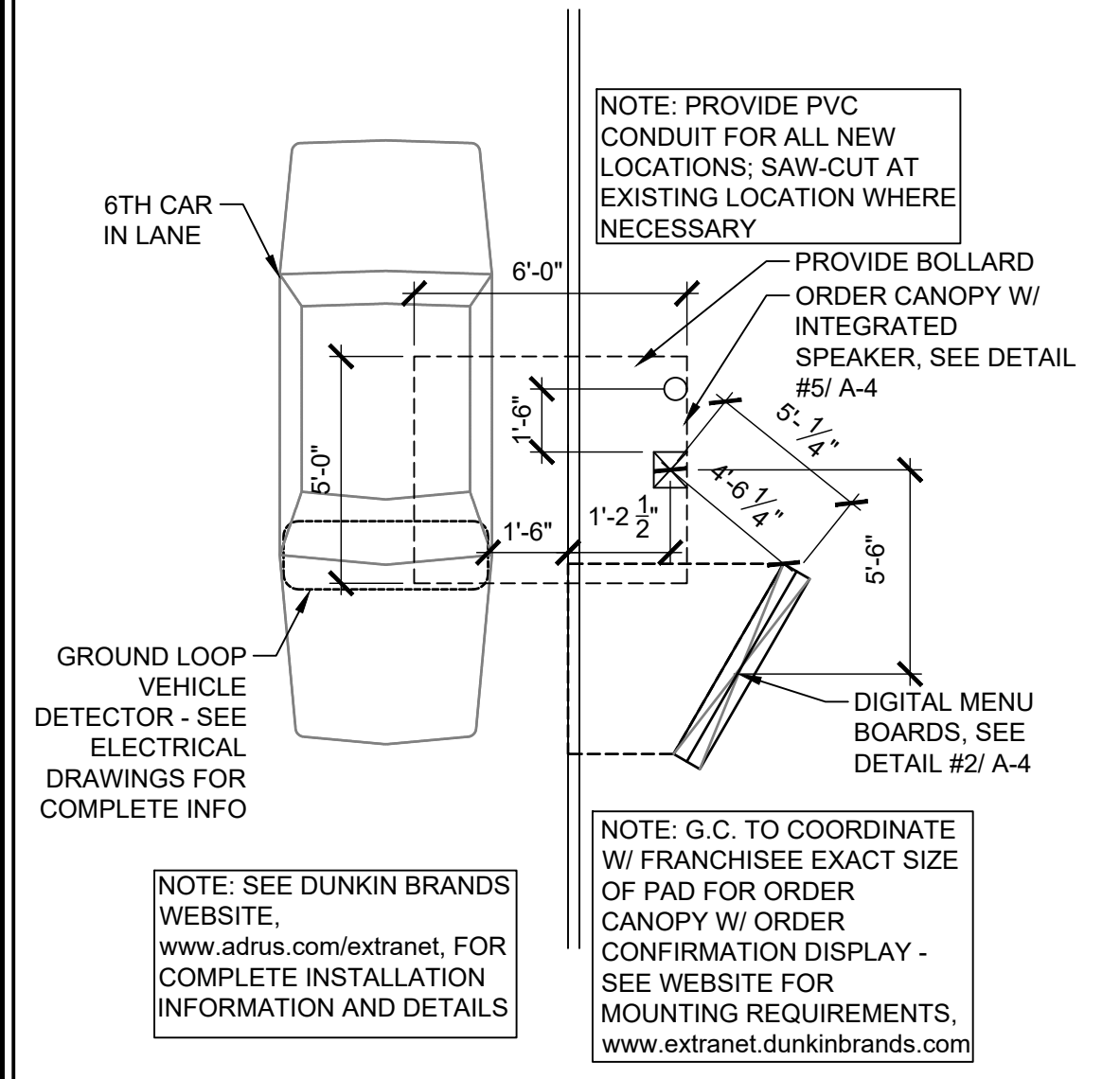
- .05" x 5" ALUMINUM RETURNS PAINTED TO MATCH PMS 7540C
- 1" TRIM CAP TO MATCH JEWELITE 313 BRONZE
- .063" ALUMINUM BACKING
- GE TETRA MAX 7100K WHITE LED'S (OR GE REPLACEMENT EQUIVALENT)
- REMOTE POWER SUPPLY, AS REQUIRED
- DRAIN HOLES, AS REQUIRED
- MOUNTING HARDWARE, AS DETERMINED BY SITE CONDITIONS
- 3/16" THICK WHITE ACRYLIC FACE
- 3M #3630-1379 DUNKIN' PINK TRANSLUCENT FILM 1ST SURFACE

**ADDITIONAL NOTES:**

- ARTWORK FONT: DUNKIN SANS DISPLAY
- CHANNEL LETTER INTERIOR PAINTED REFLECTIVE WHITE
- ELECTRICAL: (1) 20-AMP / 120 VOLT CIRCUIT U.L. LISTED
- LED'S TO BE POPULATED FOR EVEN AND CONSISTENT LIGHTING WITHOUT HOT SPOTS OR SHADOWS

**9 BUILDING SIGN DETAIL**

1/2" = 1'-0" NOTE:



**NOTE: PROVIDE PVC CONDUIT FOR ALL NEW LOCATIONS; SAW-CUT AT EXISTING LOCATION WHERE NECESSARY**

**NOTE: PROVIDE BOLLARD W/ INTEGRATED SPEAKER, SEE DETAIL #5/ A-4**

**NOTE: SEE DUNKIN BRANDS WEBSITE, [www.adrus.com/extranet](http://www.adrus.com/extranet), FOR COMPLETE INSTALLATION INFORMATION AND DETAILS**

**NOTE: G.C. TO COORDINATE W/ FRANCHISEE EXACT SIZE OF PAD FOR ORDER CANOPY W/ ORDER CONFIRMATION DISPLAY - SEE WEBSITE FOR MOUNTING REQUIREMENTS, [www.extranet.dunkinbrands.com](http://www.extranet.dunkinbrands.com)**

**10 DRIVE THRU MENU BOARD LAYOUT DTL.**

1/4" = 1'-0" NOTE:

36 Ames Avenue  
Rutherford, NJ 07070  
Tel. 201.896.0333  
Fax. 201.896.9469  
email@gkanda.biz

**gkanda ARCHITECTS PC**

Gary Kliesch and Associate Architects

Rev. No.	Drawing Issues / Revisions	Date

NJ CID: 21D00026500  
CT: ARI 0009387  
NY: 025618  
FL: ARS782  
WI: 11180-5  
PA: RA-015112-B SC: 8935  
D.C.: ARC101838 MA:10610  
GA: RA-013963 MI: 1301064135  
VA: 401016373 IL: 001023586  
NC: 11736 WV: 4569 NH: 04487

**gkanda ARCHITECTS PC**

Gary Kliesch  
A.I.A., N.A.A.B., N.C.I.B.

Proposed:

**DUNKIN'**

Block 368.07, Lots 1 & 2  
2909 Washington Rd. & North Ermonston Rd.  
Sayreville, Middlesex County, NJ

Drawing Title:  
SIGNAGE DETAILS AND SITE ELEMENT DETAILS

Date: 03/19/2020  
Dwg No: A.4.0  
Drawn By: J.M.  
Checked By: D.F.  
Job No: 20-212  
4 of 4