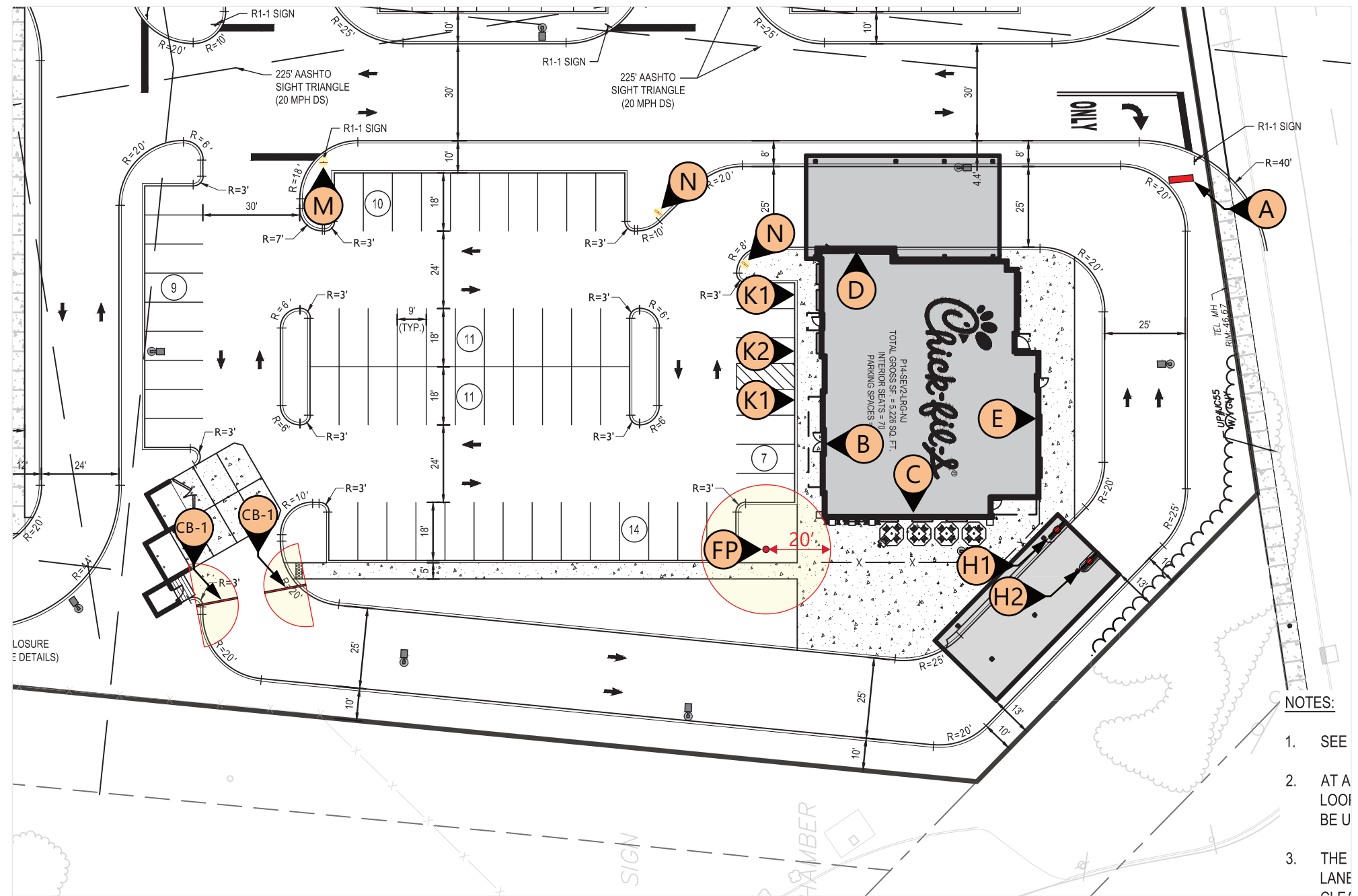


Item	Description	Qty	Sign Area
A	Main ID Sign	1	79.56
B	Wall Sign - Script 5.0' (red)	1	37.71
C	Wall Sign - Script 5.0' (red)	1	37.71
D	Wall Sign - Icon 6.0'	1	36.00
E	Wall Sign - Script 5.0' (red)	1	37.71
Aggregate Totals			149.13

Item	Description	Qty
K1	DOT - Handicapped Parking	2
K2	DOT - Handicapped Parking (Van)	1
M	DOT - Stop (30")	2
N	DOT - Stop / Do Not Enter	1
H1-H2	Menu Board (Lane 1 and 2)	2
CB-1	Clearance Bar (single) 13.00'	2
FP	Flag pole (50')	1

Sign	Width (feet)	Width (inches)	Height (feet)	Height (inches)
SIGN B	11	9.00	5	0.00
SIGN C	11	9.00	5	5.00
SIGN D	6	0.00	6	0.00
SIGN E	11	9.00	5	0.00



NOTES:

1. SEE
2. AT A LOO BE U
3. THE LANE



5198 North Lake Drive
 Lake City, GA 30260
 404.361.3800
 www.claytonsigns.com

SITE PLAN

DRAWING FILE - CFA - SAYREVILLE, NJ SIGNAGE.CDR

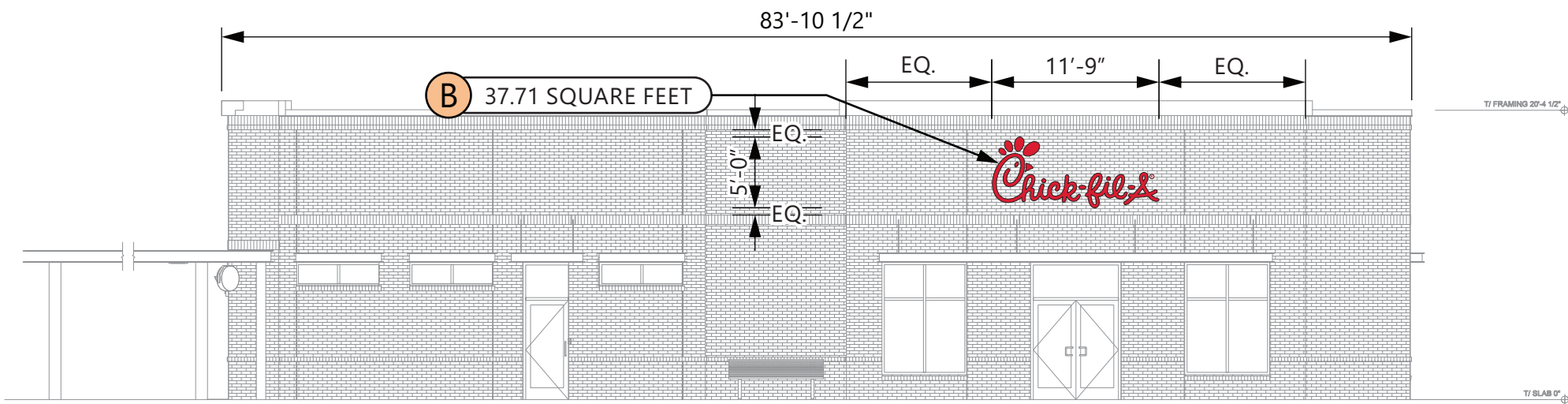
ALL ELECTRICAL
 SIGNS ARE
 120 VOLTS
 UNLESS
 OTHERWISE INDICATED

DRAWN BY Ben Holliday
 ACCOUNT REP. Ben Holliday
 DRAWING DATE June 21, 2023
 REVISION DATE September 6, 2023

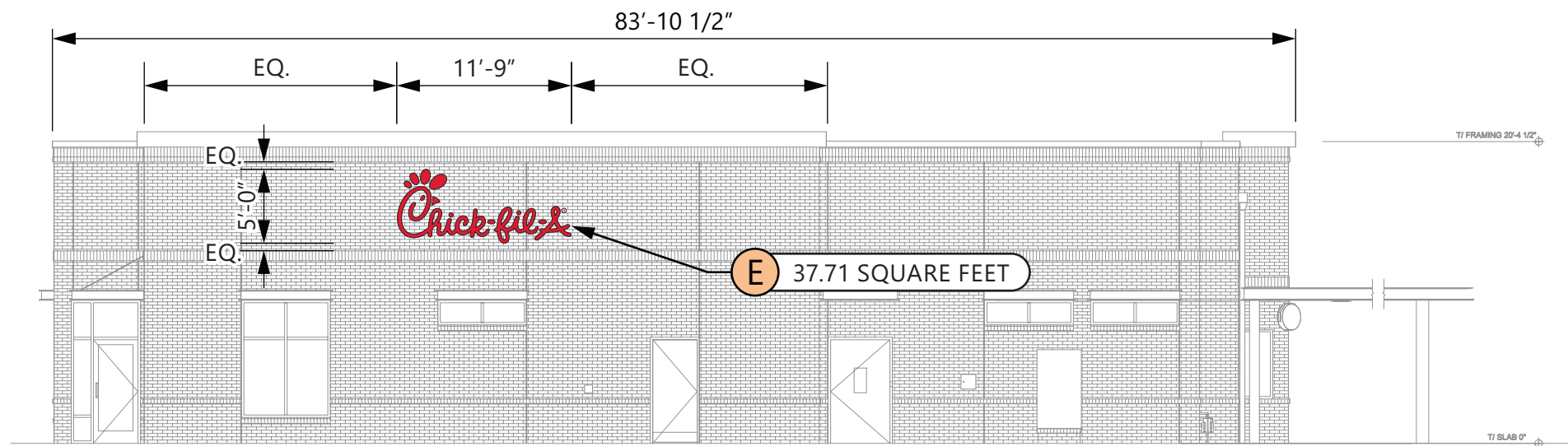
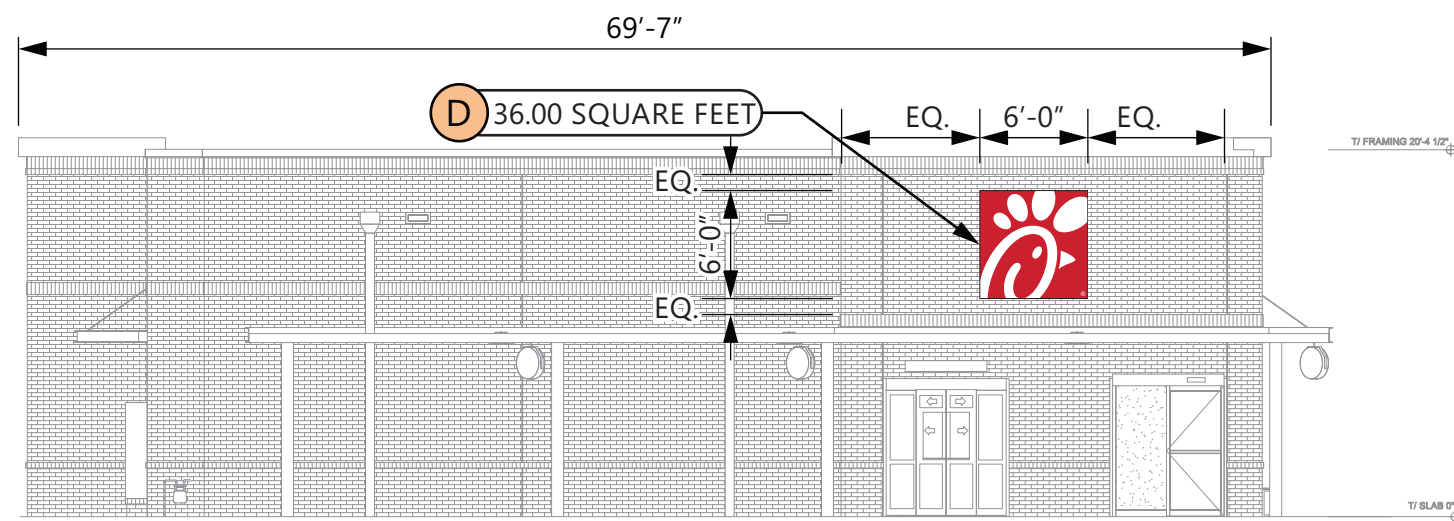
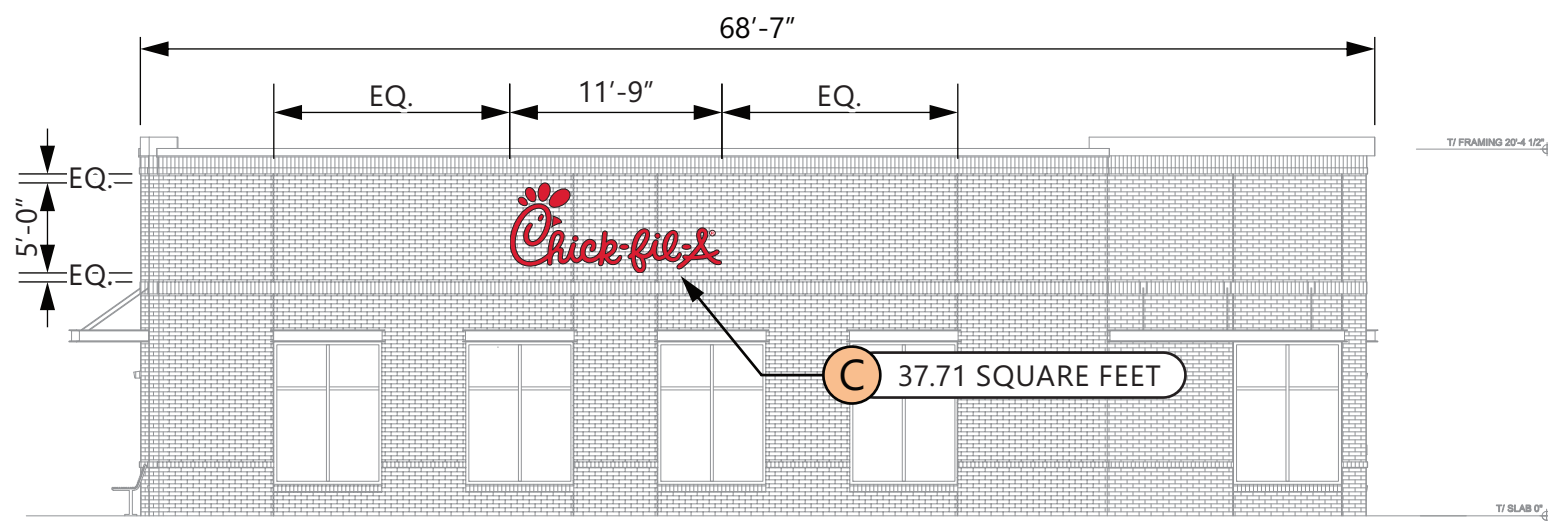
STORE NUMBER	STORE ADDRESS
L05444	Chick-fil-A at Sayreville, NJ Main Street Extension Sayreville, NJ 08872

THIS DRAWING IS AN ORIGINAL, UNPUBLISHED DESIGN CREATED BY CLAYTON SIGNS, INC. IT IS NOT TO BE REPRODUCED, CHANGED, OR EXHIBITED TO ANYONE OUTSIDE OF YOUR COMPANY IN WHOLE OR IN PART WITHOUT WRITTEN PERMISSION FROM THE OWNER OF CLAYTON SIGNS, INC. ANY SUCH ACTIONS MAY BE SUBJECT TO LEGAL ACTION IN A COURT OF LAW.
 ©2023 ALL RIGHTS RESERVED

SITE PLAN



Sign	Width (feet)	Width (inches)	Height (feet)	Height (inches)
SIGN B	11	9.00	5	0.00
SIGN C	11	9.00	5	5.00
SIGN D	6	0.00	6	0.00
SIGN E	11	9.00	5	0.00



ELEVATIONS

SCALE - 3/32" = 1'- 0"



5198 North Lake Drive
 Lake City, GA 30260
 404.361.3800
 www.claytonsigns.com

ELEVATIONS

DRAWING FILE - CFA - SAYREVILLE, NJ SIGNAGE.CDR

ALL ELECTRICAL
 SIGNS ARE
 120 VOLTS
 UNLESS
 OTHERWISE INDICATED

DRAWN BY Ben Holliday
 ACCOUNT REP. Ben Holliday
 DRAWING DATE June 21, 2023
 REVISION DATE September 6, 2023

STORE NUMBER	STORE ADDRESS
L05444	Chick-fil-A at Sayreville, NJ Main Street Extension Sayreville, NJ 08872

THIS DRAWING IS AN ORIGINAL, UNPUBLISHED DESIGN CREATED BY CLAYTON SIGNS, INC. IT IS NOT TO BE REPRODUCED, CHANGED, OR EXHIBITED TO ANYONE OUTSIDE OF YOUR COMPANY IN WHOLE OR IN PART WITHOUT WRITTEN PERMISSION FROM THE OWNER OF CLAYTON SIGNS, INC. ANY SUCH ACTIONS MAY BE SUBJECT TO LEGAL ACTION IN A COURT OF LAW.
 ©2023 ALL RIGHTS RESERVED

**BUILDING
 ELEVATIONS**

SPECIFICATIONS

CABINET

D/F ALUM. CABINET WITH SIGNCOMP RETRO FLAT BLEED FRAME AND COVER, WITH .063" ALUM FILLER. INTERNALLY ILLUMINATED WHITE LED 6500K LIGHTS, SPACED EVENLY. PAINT INTERIOR OF CABINETS MATTE WHITE. MASONRY WORK BY THE GENERAL CONTRACTOR FOUNDATION IS FURNISHED BY CLAYTON SIGNS, INC.



3M #3630-53 TRANSLUCENT CARDINAL RED



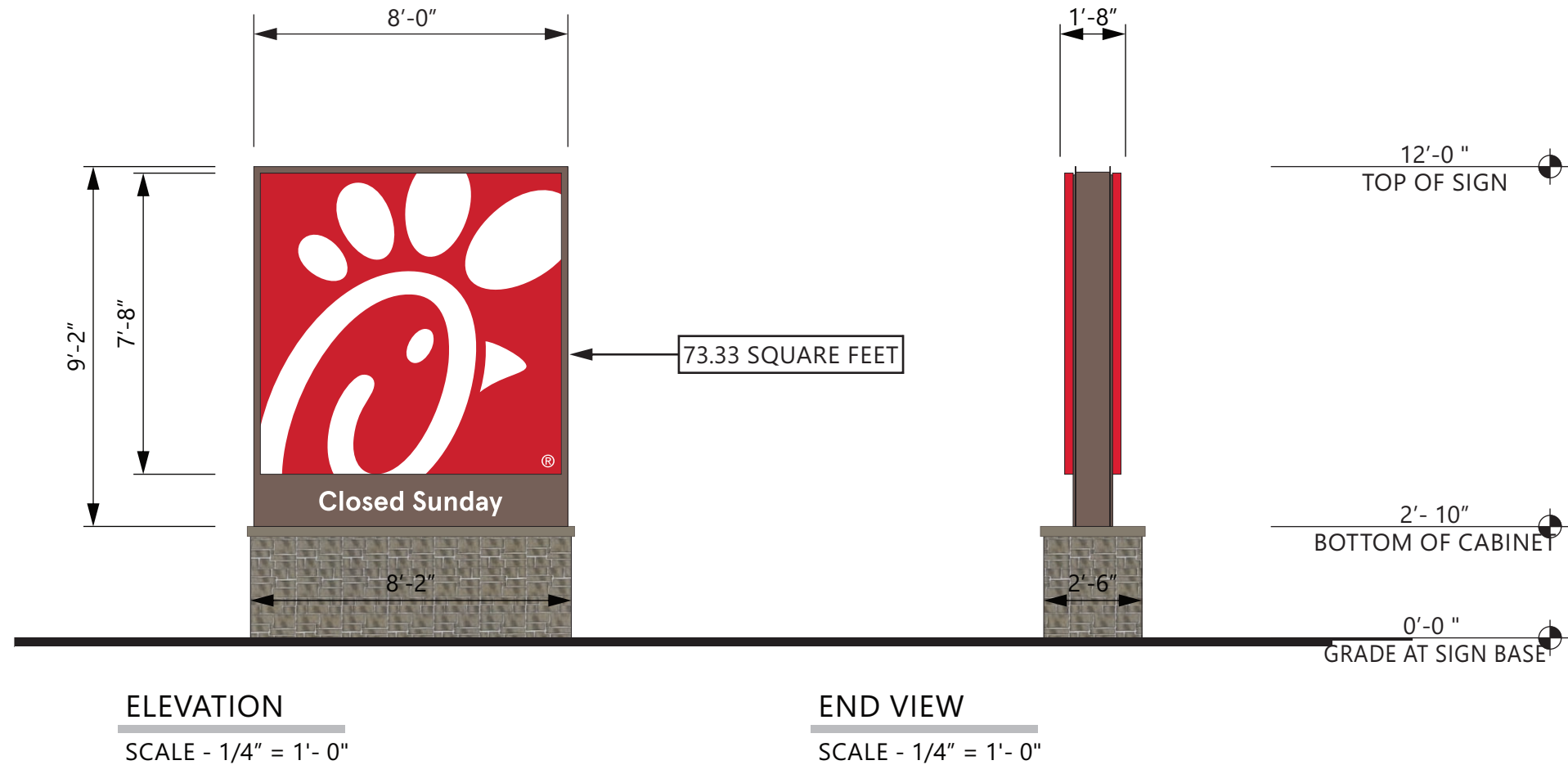
7328 WHITE POLYCARBONATE



MATTHEWS #74155 DARK BRONZE



ROSETTA KODAH SYSTEM BY NICOLock COLOR - ANTHRACITE GREY



SEE ENGINEER STAMPED DRAWING FOR FOUNDATION DETAILS

	DOUBLE FACED CABINET		WET LOCATION
	LED'S GEWH0SP6 - 71K - DOUBLE SIDED POWER SUPPLY GEPS24 - 24V POWER SUPPLY		CONNECT THE AC LINE TO THE BLACK (LINE) AND WHITE (NEUTRAL) INPUT WIRES OF THE POWER SUPPLY USING 18-14 AWG TWIST ON WIRE CONNECTORS. GROUND POWER SUPPLY GREEN WIRE TO GROUNDING SCREW. REPLACE JUNCTION BOX COVER.
THIS SIGN IS INTENDED TO BE INSTALLED IN ACCORDANCE WITH REQUIREMENTS OF ARTICLE 600 OF THE NATIONAL ELECTRICAL CODE AND/OR APPLICABLE LOCAL CODES. THIS INCLUDES PROPER GROUNDING & BONDING OF THE SIGN.			



5198 North Lake Drive
 Lake City, GA 30260
 404.361.3800
 www.claytonsigns.com

DOUBLE-FACED PYLON SIGN

DRAWING FILE - CFA - SAYREVILLE, NJ SIGNAGE.CDR

ALL ELECTRICAL SIGNS ARE 120 VOLTS UNLESS OTHERWISE INDICATED

DRAWN BY Ben Holliday
 ACCOUNT REP. Ben Holliday
 DRAWING DATE June 21, 2023
 REVISION DATE September 6, 2023

STORE NUMBER	STORE ADDRESS
L05444	Chick-fil-A at Sayreville, NJ Main Street Extension Sayreville, NJ 08872

THIS DRAWING IS AN ORIGINAL, UNPUBLISHED DESIGN CREATED BY CLAYTON SIGNS, INC. IT IS NOT TO BE REPRODUCED, CHANGED, OR EXHIBITED TO ANYONE OUTSIDE OF YOUR COMPANY IN WHOLE OR IN PART WITHOUT WRITTEN PERMISSION FROM THE OWNER OF CLAYTON SIGNS, INC. ANY SUCH ACTIONS MAY BE SUBJECT TO LEGAL ACTION IN A COURT OF LAW.
 ©2023 ALL RIGHTS RESERVED

LOCATION
A

SPECIFICATIONS

CHICK-FIL-A SCRIPT LETTERS

LETTERS ARE LED-ILLUMINATED CHANNEL LETTERS MOUNTED ON ALUMINUM SURFACE OF BUILDING WITH TRANSFORMERS REMOTELY LOCATED BEHIND THE WALL IN UL APPROVED TRANSFORMER BOXES. FACES ARE 3/16" ACRYLIC RETURNS ARE .063 ALUMINUM BACKS ARE .080 ALUMINUM ALL RETURNS ARE ARC-WELDED TO LETTER BACKS



CHANNEL LETTER FACES
2793 RED ACRYLIC
TRIMCAP RETAINER-
1" RED JEWELITE TRIMCAP

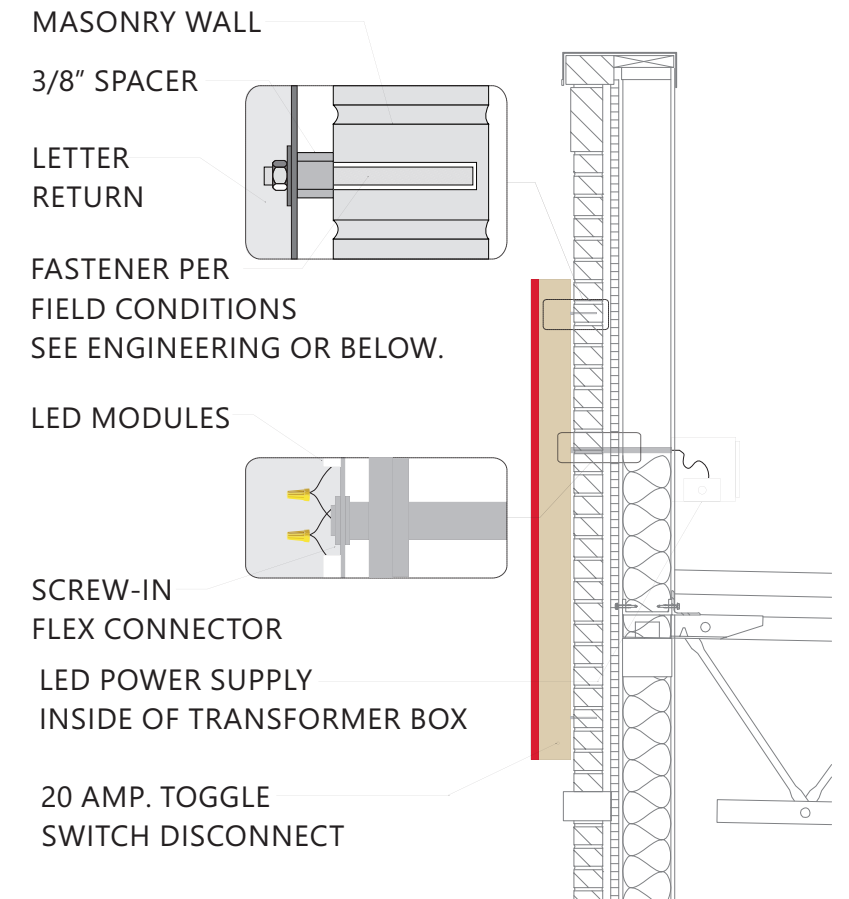


ALUMINUM RETURNS
PAINTED TO MATCH
SHERWIN WILLIAMS
SW6108 LATTE



ELEVATION

SCALE - 1/2" = 1'- 0"



FASTENER NOTE:

USE 18-8 STAINLESS STEEL BOLTS W/ SPACERS THRU EIFS. EXPANSION BOLTS IN CONCRETE OR BRICK WALLS. TOGGLE BOLTS IN CONCRETE BLOCK OR PANEL WALLS. TEK SCREWS IN METAL STUDS. LAG-BOLTS IN WOOD STUDS. ALL THREAD BOLTS WITH BLOCKING BETWEEN STUDS.

CROSS-SECTION

SCALE - 1/2" = 1'- 0"

	CHANNEL LETTERS (RED ILLUMINATION)	WET LOCATION
	LED's JTSL5016R-0.4 RED LED POWER SUPPLY BL-120-12-60 POWER SUPPLY	<p>CONNECT THE AC LINE TO THE BLACK (LINE) AND WHITE (NEUTRAL) INPUT WIRES OF THE POWER SUPPLY USING 18-14 AWG TWIST ON WIRE CONNECTORS. GROUND POWER SUPPLY GREEN WIRE TO GROUNDING SCREW. REPLACE JUNCTION BOX COVER.</p>
THIS SIGN IS INTENDED TO BE INSTALLED IN ACCORDANCE WITH REQUIREMENTS OF ARTICLE 600 OF THE NATIONAL ELECTRICAL CODE AND/OR APPLICABLE LOCAL CODES. THIS INCLUDES PROPER GROUNDING & BONDING OF THE SIGN.		



5198 North Lake Drive
Lake City, GA 30260
404.361.3800
www.claytonsigns.com

LED-ILLUMINATED
CHANNEL LETTERS

DRAWING FILE - CFA - SAYREVILLE, NJ SIGNAGE.CDR

ALL ELECTRICAL
SIGNS ARE
120 VOLTS
UNLESS
OTHERWISE INDICATED

DRAWN BY Ben Holliday
ACCOUNT REP. Ben Holliday
DRAWING DATE June 21, 2023
REVISION DATE September 6, 2023

STORE NUMBER	STORE ADDRESS
L05444	Chick-fil-A at Sayreville, NJ Main Street Extension Sayreville, NJ 08872

THIS DRAWING IS AN ORIGINAL, UNPUBLISHED DESIGN CREATED BY CLAYTON SIGNS, INC. IT IS NOT TO BE REPRODUCED, CHANGED, OR EXHIBITED TO ANYONE OUTSIDE OF YOUR COMPANY IN WHOLE OR IN PART WITHOUT WRITTEN PERMISSION FROM THE OWNER OF CLAYTON SIGNS, INC. ANY SUCH ACTIONS MAY BE SUBJECT TO LEGAL ACTION IN A COURT OF LAW.
©2023 ALL RIGHTS RESERVED

LOCATION
B,C,E

SPECIFICATIONS

CABINET

ALUMINUM CABINET HAS EXTRUDED ALUMINUM

FACES

FLEX FACES DECORATED WITH TRANSLUCENT VINYL FILM ON SURFACE OF ACRYLIC.

INTERNALLY ILLUMINATED WITH WHITE LED 6500K LIGHTS.

DISCONNECT SWITCH AS REQUIRED PER NEC.

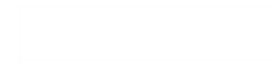


FACES

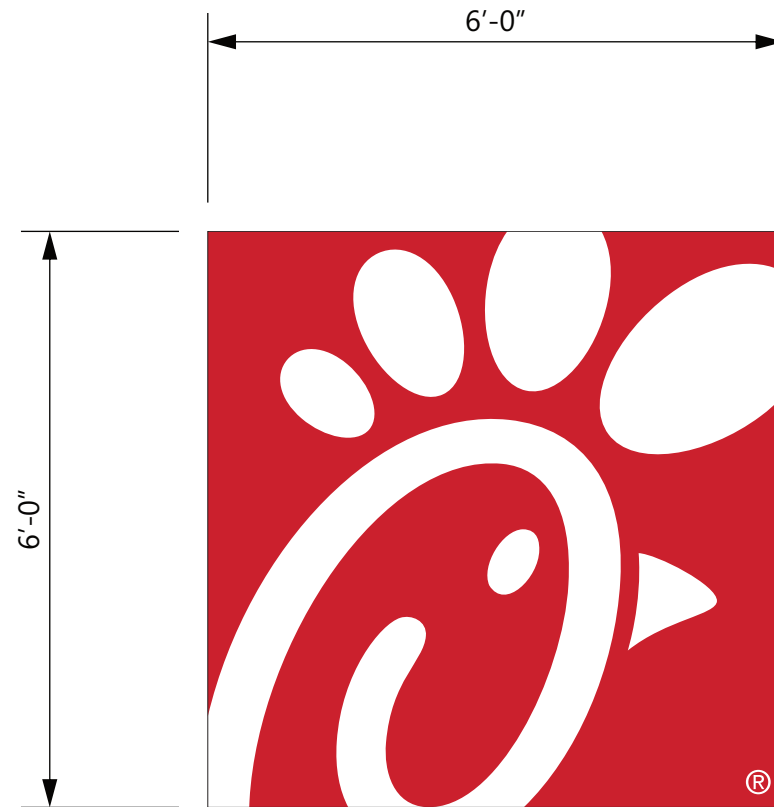
3M #3630-53 CARDINAL RED TRANSLUCENT VINYL

CABINET

GENESIS M SINGLE STAGE (G2-SERIES) RED #48247



3M PANOGRAPHIC III FLEX FACE



ELEVATION

SCALE - 1/2" = 1'- 0"

36.00 SQUARE FEET

WALL SHEATHING

3/8" SPACER

SIGN CABINET

3/8" STAINLESS STEEL LAG BOLT INTO BLOCKING

2 x 8" WOOD BLOCKING FOR MOUNTING OF SIGN

2 x 8" WOOD BLOCKING FOR MOUNTING OF SIGN

20 AMP. SWITCH DISCONNECT

END VIEW

SCALE - 1/2" = 1'- 0"

	SINGLE FACED CABINET		WET LOCATION
		LED'S GEVHSSPS3 - 71K - SINGLED SID POWER SUPPLY GEPST2 - 12V POWER SUPPLY	
CONNECT THE AC LINE TO THE BLACK (LINE) AND WHITE (NEUTRAL) INPUT WIRES OF THE POWER SUPPLY USING 18-14 AWG TWIST ON WIRE CONNECTORS. GROUND POWER SUPPLY GREEN WIRE TO GROUNDING SCREW. REPLACE JUNCTION BOX COVER.			
THIS SIGN IS INTENDED TO BE INSTALLED IN ACCORDANCE WITH REQUIREMENTS OF ARTICLE 600 OF THE NATIONAL ELECTRICAL CODE AND/OR APPLICABLE LOCAL CODES. THIS INCLUDES PROPER GROUNDING & BONDING OF THE SIGN.			



5198 North Lake Drive
 Lake City, GA 30260
 404.361.3800
 www.claytonsigns.com

WALL SIGN

DRAWING FILE - CFA - SAYREVILLE, NJ SIGNAGE.CDR

ALL ELECTRICAL SIGNS ARE 120 VOLTS UNLESS OTHERWISE INDICATED

DRAWN BY Ben Holliday
 ACCOUNT REP. Ben Holliday
 DRAWING DATE June 21, 2023
 REVISION DATE September 6, 2023

STORE NUMBER	STORE ADDRESS
L05444	Chick-fil-A at Sayreville, NJ Main Street Extension Sayreville, NJ 08872

THIS DRAWING IS AN ORIGINAL, UNPUBLISHED DESIGN CREATED BY CLAYTON SIGNS, INC. IT IS NOT TO BE REPRODUCED, CHANGED, OR EXHIBITED TO ANYONE OUTSIDE OF YOUR COMPANY IN WHOLE OR IN PART WITHOUT WRITTEN PERMISSION FROM THE OWNER OF CLAYTON SIGNS, INC. ANY SUCH ACTIONS MAY BE SUBJECT TO LEGAL ACTION IN A COURT OF LAW.
 ©2023 ALL RIGHTS RESERVED

LOCATION
D

SPECIFICATIONS

ALUMINUM CONSTRUCTION CABINETS
WITH DIGITAL DISPLAY BOARDS
WITH STATIC IMAGES

MENU BOARDS FURNISHED
BY COATES GROUP AND
INSTALLED BY HONOR BUILT
MENU BOARD COLUMN AND FRAMING
FURNISHED AND INSTALLED BY
PATTISON SIGN GROUP
ANCHOR CAGES AND FOOTINGS
FURNISHED AND INSTALLED BY
CLAYTON SIGNS

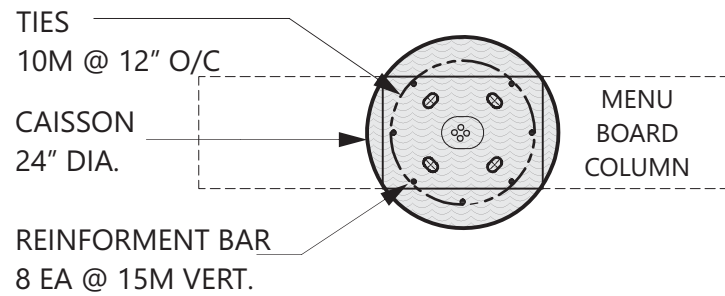
COLORS



CHICK-FIL-A DARK BRONZE

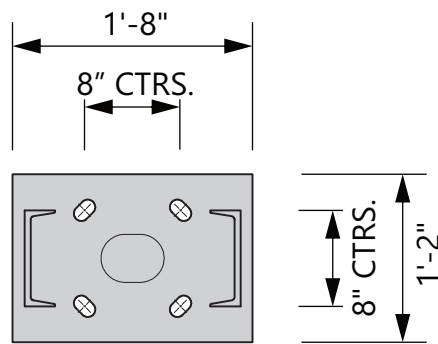


WHITE REFLECTIVE VINYL FILM



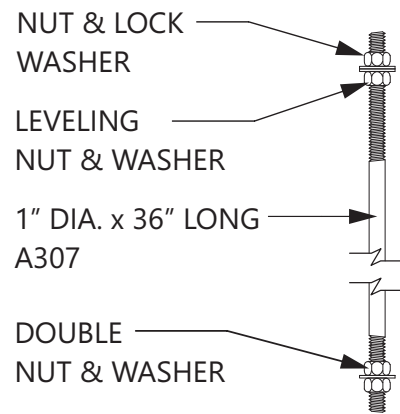
PLAN VIEW

SCALE - 1/2" = 1'- 0"



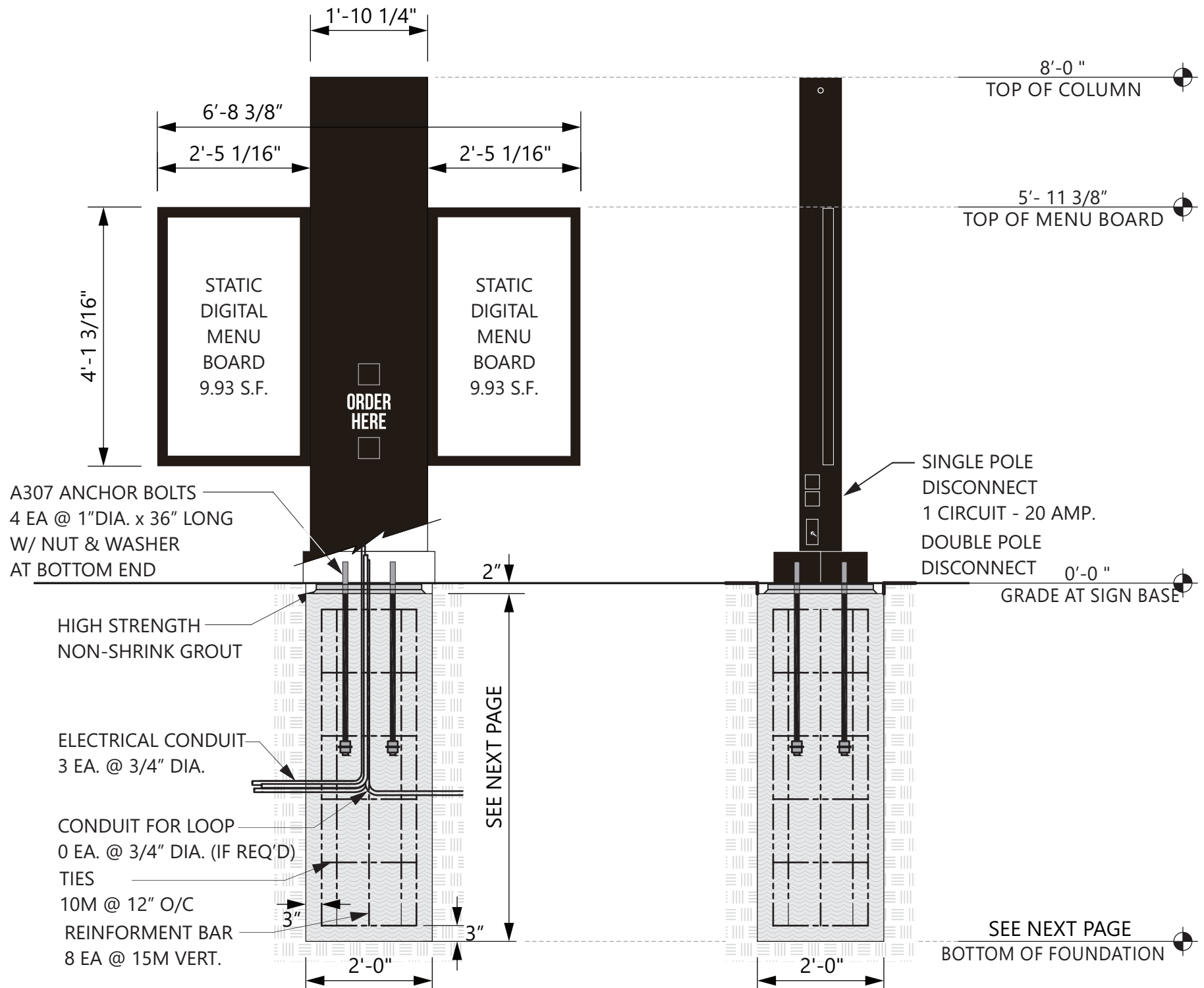
BASE PLATE DETAIL

SCALE - 3/4" = 1'- 0"



ANCHOR BOLT - QTY. 4

NOT TO SCALE



ELEVATION

SCALE - 1/2" = 1'- 0"

END VIEW

SCALE - 1/2" = 1'- 0"



5198 North Lake Drive
Lake City, GA 30260
404.361.3800
www.claytonsigns.com

STATIC DIGITAL DRIVE-THRU
MENU BOARDS

DRAWING FILE - CFA - SAYREVILLE, NJ SIGNAGE.CDR

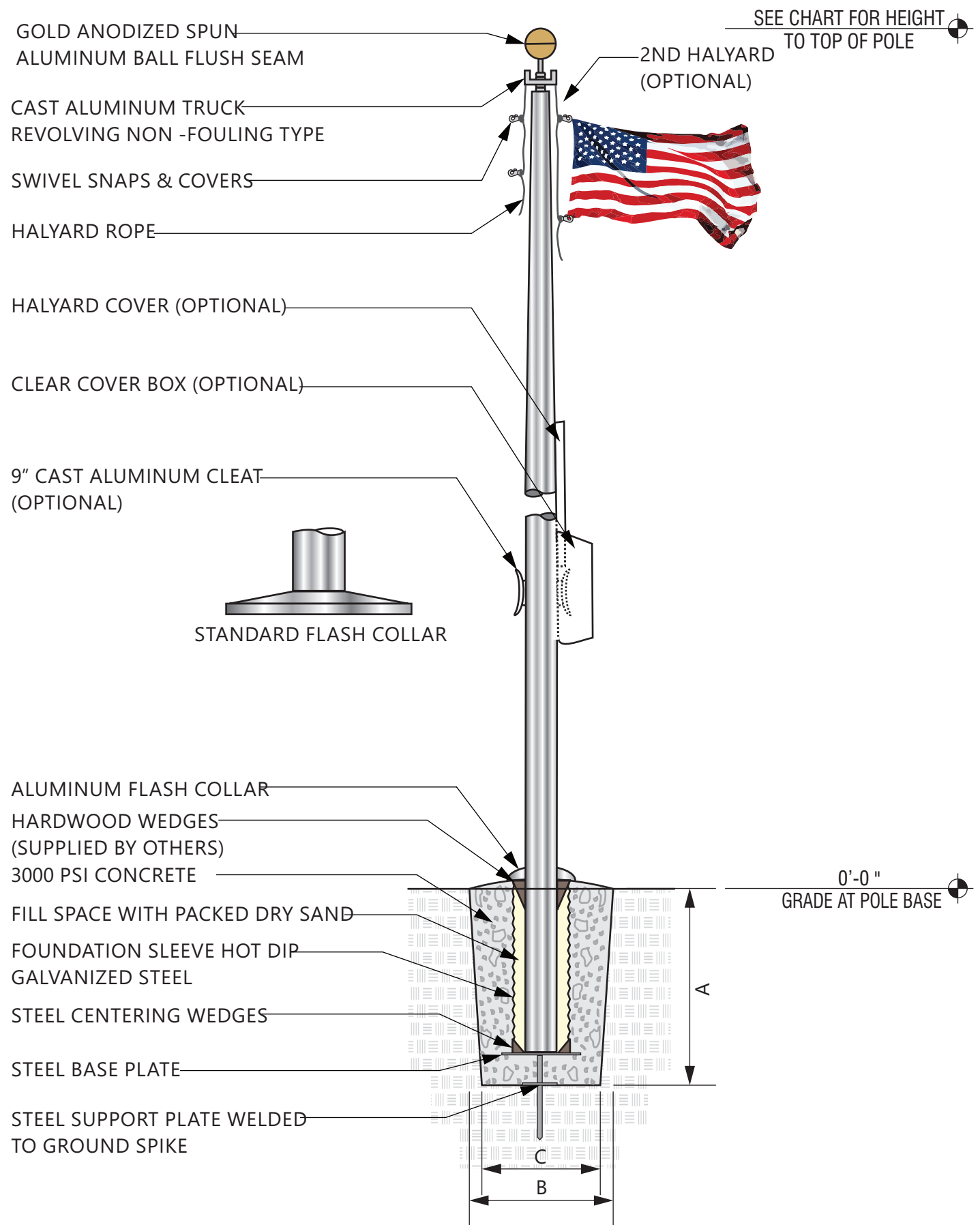
ALL ELECTRICAL SIGNS ARE 120 VOLTS UNLESS OTHERWISE INDICATED

DRAWN BY Ben Holliday
ACCOUNT REP. Ben Holliday
DRAWING DATE June 21, 2023
REVISION DATE September 6, 2023

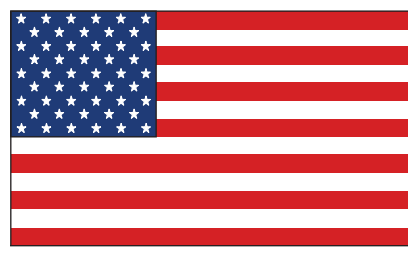
STORE NUMBER	STORE ADDRESS
L05444	Chick-fil-A at Sayreville, NJ Main Street Extension Sayreville, NJ 08872

THIS DRAWING IS AN ORIGINAL, UNPUBLISHED DESIGN CREATED BY CLAYTON SIGNS, INC. IT IS NOT TO BE REPRODUCED, CHANGED, OR EXHIBITED TO ANYONE OUTSIDE OF YOUR COMPANY IN WHOLE OR IN PART WITHOUT WRITTEN PERMISSION FROM THE OWNER OF CLAYTON SIGNS, INC. ANY SUCH ACTIONS MAY BE SUBJECT TO LEGAL ACTION IN A COURT OF LAW.
©2023 ALL RIGHTS RESERVED

LOCATION
H1/H2



SEE CHART FOR HEIGHT TO TOP OF POLE



FLAG SIZES

POLE	A	B	MATERIAL
20'	3'0"	5'0"	POLYESTHER
25'	4'0"	6'0"	POLYESTHER
30'	5'0"	8'0"	POLYESTHER
35'	6'0"	10'0"	POLYESTHER
40'	8'0"	12'0"	POLYESTHER
45'	8'0"	12'0"	POLYESTHER
50'	12'0"	18'0"	POLYESTHER

FOUNDATION SIZES

HEIGHT	A	B	C
20'	3'6"	30"	24"
25'	3'6"	30"	24"
30'	3'6"	30"	24"
35'	4'0"	36"	30"
40'	4'6"	42"	36"
45'	5'0"	48"	42"
50'	5'6"	48"	42"

**GROUND SLEEVE AND CONCRETE INSTALLED BY THE GENERAL CONTRACTOR
POLE INSTALLED ON PRE-INSTALLED GROUND SLEEVE BY SIGN CONTRACTOR**



5198 North Lake Drive
Lake City, GA 30260
404.361.3800
www.claytonsigns.com

FLAG POLE

DRAWING FILE - CFA - SAYREVILLE, NJ SIGNAGE.CDR

ALL ELECTRICAL SIGNS ARE 120 VOLTS UNLESS OTHERWISE INDICATED

DRAWN BY Ben Holliday
ACCOUNT REP. Ben Holliday
DRAWING DATE June 21, 2023
REVISION DATE September 6, 2023

STORE NUMBER	STORE ADDRESS
L05444	Chick-fil-A at Sayreville, NJ Main Street Extension Sayreville, NJ 08872

THIS DRAWING IS AN ORIGINAL, UNPUBLISHED DESIGN CREATED BY CLAYTON SIGNS, INC. IT IS NOT TO BE REPRODUCED, CHANGED, OR EXHIBITED TO ANYONE OUTSIDE OF YOUR COMPANY IN WHOLE OR IN PART WITHOUT WRITTEN PERMISSION FROM THE OWNER OF CLAYTON SIGNS, INC. ANY SUCH ACTIONS MAY BE SUBJECT TO LEGAL ACTION IN A COURT OF LAW.
©2023 ALL RIGHTS RESERVED

**LOCATION
FP**

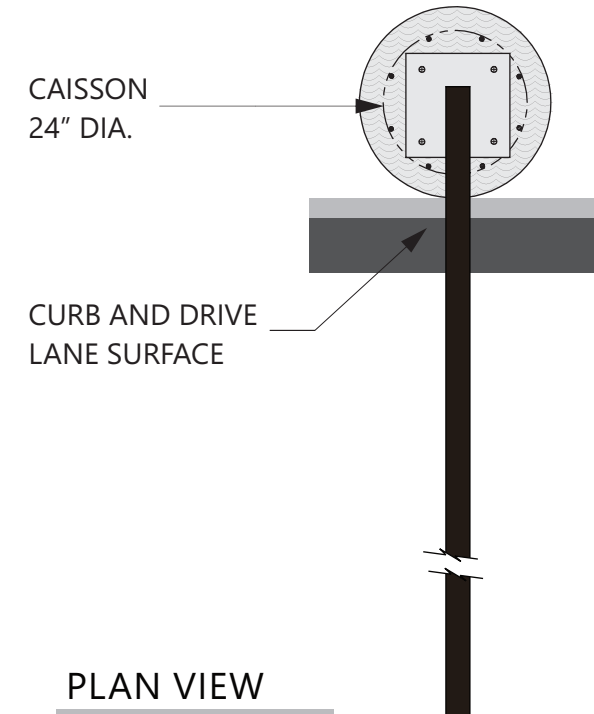
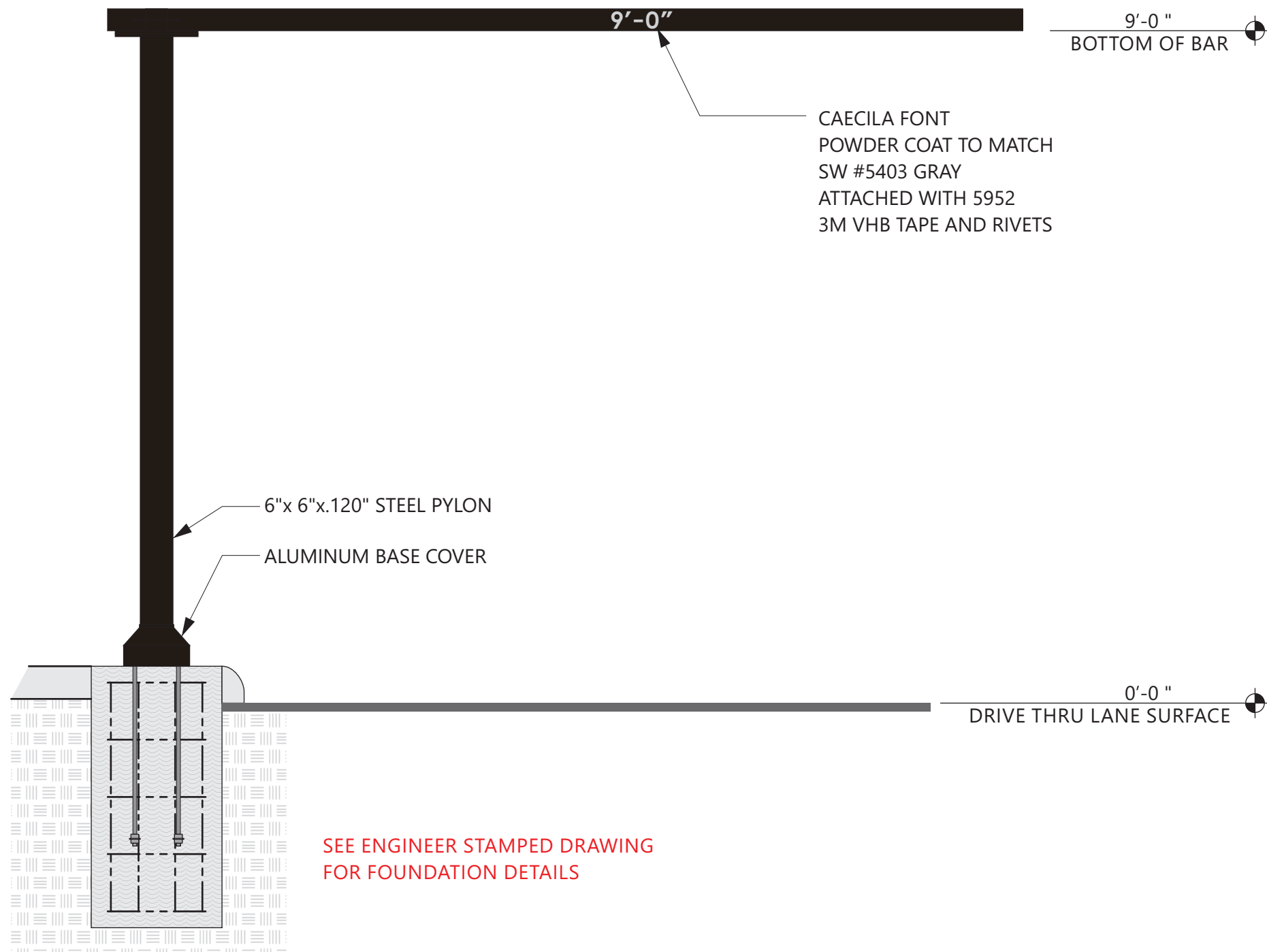
SPECIFICATIONS

CLEARANCE BAR

COLORS


MATTE BLACK TEXTURED


SHERWIN WILLIAMS
SW 5403 GRAY



5198 North Lake Drive
Lake City, GA 30260
404.361.3800
www.claytonsigns.com

**DRIVE-THRU
CLEARANCE BAR**

DRAWING FILE - CFA - SAYREVILLE, NJ SIGNAGE.CDR

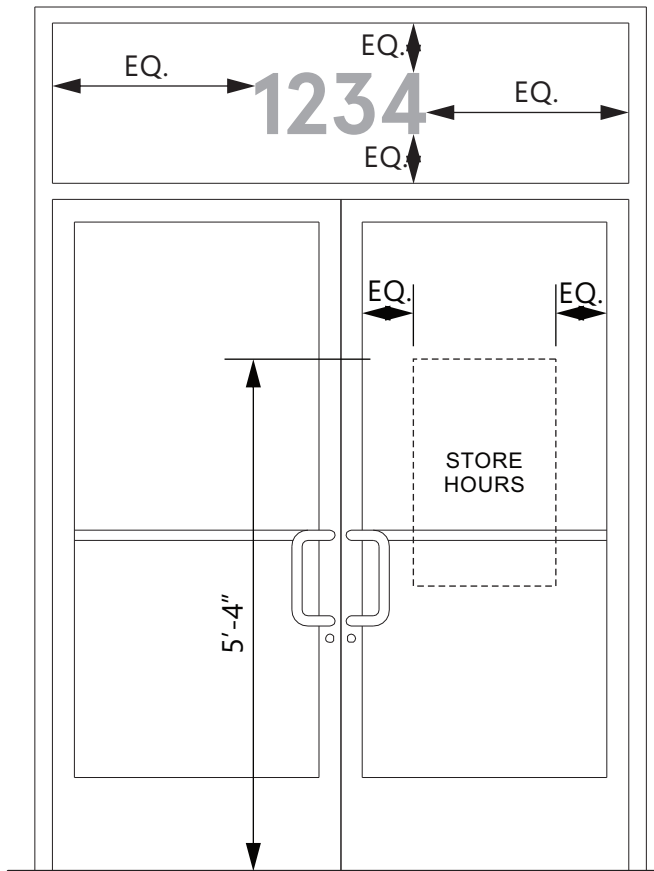
ALL ELECTRICAL
SIGNS ARE
120 VOLTS
UNLESS
OTHERWISE INDICATED

DRAWN BY Ben Holliday
ACCOUNT REP. Ben Holliday
DRAWING DATE June 21, 2023
REVISION DATE September 6, 2023

STORE NUMBER	STORE ADDRESS
L05444	Chick-fil-A at Sayreville, NJ Main Street Extension Sayreville, NJ 08872

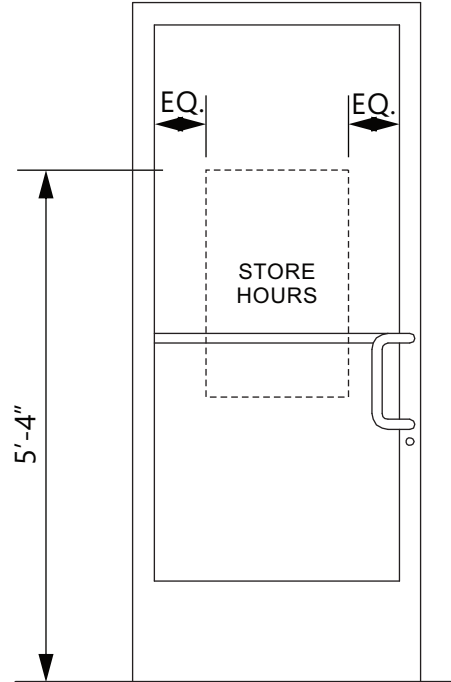
THIS DRAWING IS AN ORIGINAL, UNPUBLISHED DESIGN CREATED BY CLAYTON SIGNS, INC. IT IS NOT TO BE REPRODUCED, CHANGED, OR EXHIBITED TO ANYONE OUTSIDE OF YOUR COMPANY IN WHOLE OR IN PART WITHOUT WRITTEN PERMISSION FROM THE OWNER OF CLAYTON SIGNS, INC. ANY SUCH ACTIONS MAY BE SUBJECT TO LEGAL ACTION IN A COURT OF LAW.
©2023 ALL RIGHTS RESERVED

**LOCATION
CB-1**



ELEVATION

SCALE - 1/2" = 1'- 0"



ELEVATION

SCALE - 1/2" = 1'- 0"



ELEVATION

SCALE - 1 1/2" = 1'- 0"

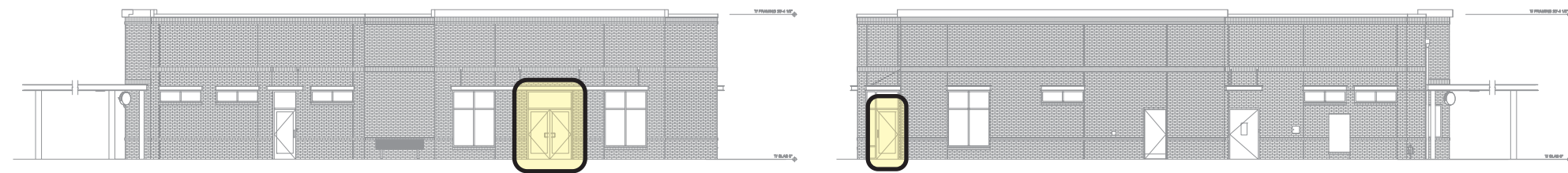
8" **1234**

8" TALL ADDRESS NUMBERS ARE 3M #7725-10 OPAQUE WHITE VINYL FILM APPLIED TO EXTERIOR SURFACE OF GLASS. (SHOWN IN GREY FOR ILLUSTRATION) APERCU BOLD FONT

VERIFY ADDRESS BEFORE MAKING NUMBERS

ELEVATION
NOT TO SCALE

LETTERING IS 3M #7725-10 OPAQUE WHITE VINYL FILM (SHOWN IN GREY FOR ILLUSTRATION)
CREDIT CARD LOGOS ARE INDIVIDUAL PRINTED DECALS ON CLEAR FILM. ALL GRAPHICS ARE APPLIED TO EXTERIOR SURFACE OF GLASS. STORE HOURS MAY BE DIFFERENT PER STORE. SUNDAY HAS RED VINYL FILM STRIKE THROUGH ON IT. **PROVIDE EXTRA 6:00 PER EACH SET.**



5198 North Lake Drive
Lake City, GA 30260
404.361.3800
www.claytonsigns.com

WINDOW GRAPHICS

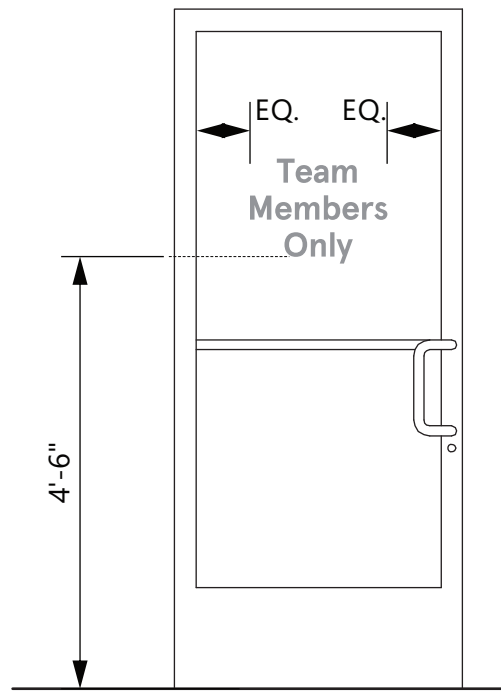
DRAWING FILE - CFA - SAYREVILLE, NJ SIGNAGE.CDR

ALL ELECTRICAL SIGNS ARE 120 VOLTS UNLESS OTHERWISE INDICATED

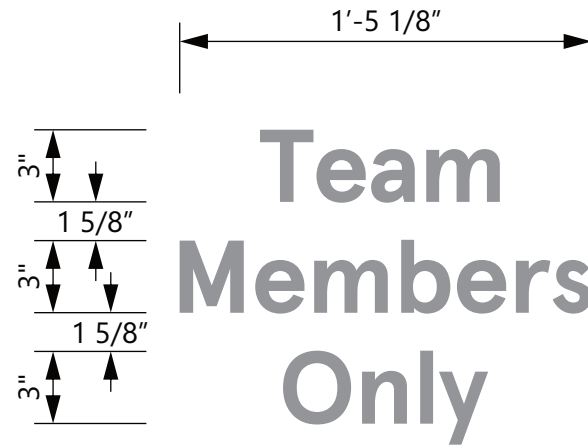
DRAWN BY Ben Holliday
ACCOUNT REP. Ben Holliday
DRAWING DATE June 21, 2023
REVISION DATE September 6, 2023

STORE NUMBER	STORE ADDRESS
L05444	Chick-fil-A at Sayreville, NJ Main Street Extension Sayreville, NJ 08872

THIS DRAWING IS AN ORIGINAL, UNPUBLISHED DESIGN CREATED BY CLAYTON SIGNS, INC. IT IS NOT TO BE REPRODUCED, CHANGED, OR EXHIBITED TO ANYONE OUTSIDE OF YOUR COMPANY IN WHOLE OR IN PART WITHOUT WRITTEN PERMISSION FROM THE OWNER OF CLAYTON SIGNS, INC. ANY SUCH ACTIONS MAY BE SUBJECT TO LEGAL ACTION IN A COURT OF LAW.
©2023 ALL RIGHTS RESERVED

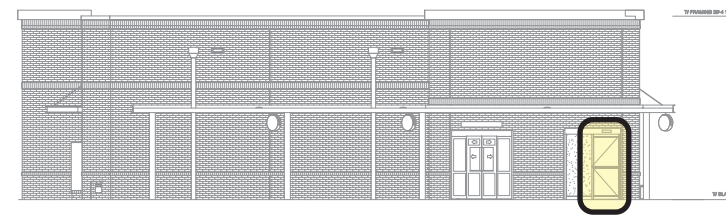
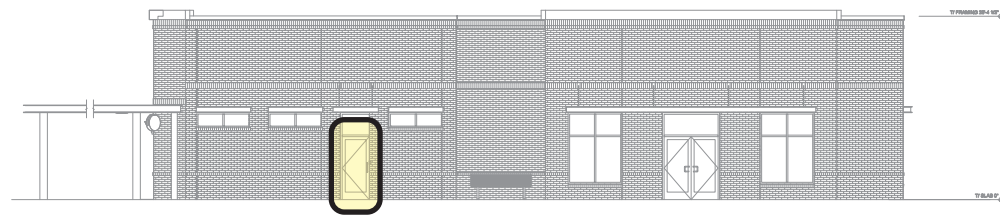


ELEVATION
SCALE - 1/2" = 1'- 0"



ELEVATION
SCALE - 1 1/2" = 1'- 0"

LETTERING IS 3M 7725-10
OPAQUE WHITE APPLIED VINYL
ALL GRAPHICS ARE APPLIED TO
EXTERIOR SURFACE OF GLASS.
(SHOWN IN GREY FOR ILLUSTRATION
PURPOSES ONLY)



5198 North Lake Drive
Lake City, GA 30260
404.361.3800
www.claytonsigns.com

WINDOW GRAPHICS

DRAWING FILE - CFA - SAYREVILLE, NJ SIGNAGE.CDR

ALL ELECTRICAL
SIGNS ARE
120 VOLTS
UNLESS
OTHERWISE INDICATED

DRAWN BY Ben Holliday
ACCOUNT REP. Ben Holliday
DRAWING DATE June 21, 2023
REVISION DATE September 6, 2023

STORE NUMBER	STORE ADDRESS
L05444	Chick-fil-A at Sayreville, NJ Main Street Extension Sayreville, NJ 08872

THIS DRAWING IS AN ORIGINAL, UNPUBLISHED DESIGN CREATED BY CLAYTON SIGNS, INC. IT IS NOT TO BE REPRODUCED, CHANGED, OR EXHIBITED TO ANYONE OUTSIDE OF YOUR COMPANY IN WHOLE OR IN PART WITHOUT WRITTEN PERMISSION FROM THE OWNER OF CLAYTON SIGNS, INC. ANY SUCH ACTIONS MAY BE SUBJECT TO LEGAL ACTION IN A COURT OF LAW.

©2023 ALL RIGHTS RESERVED