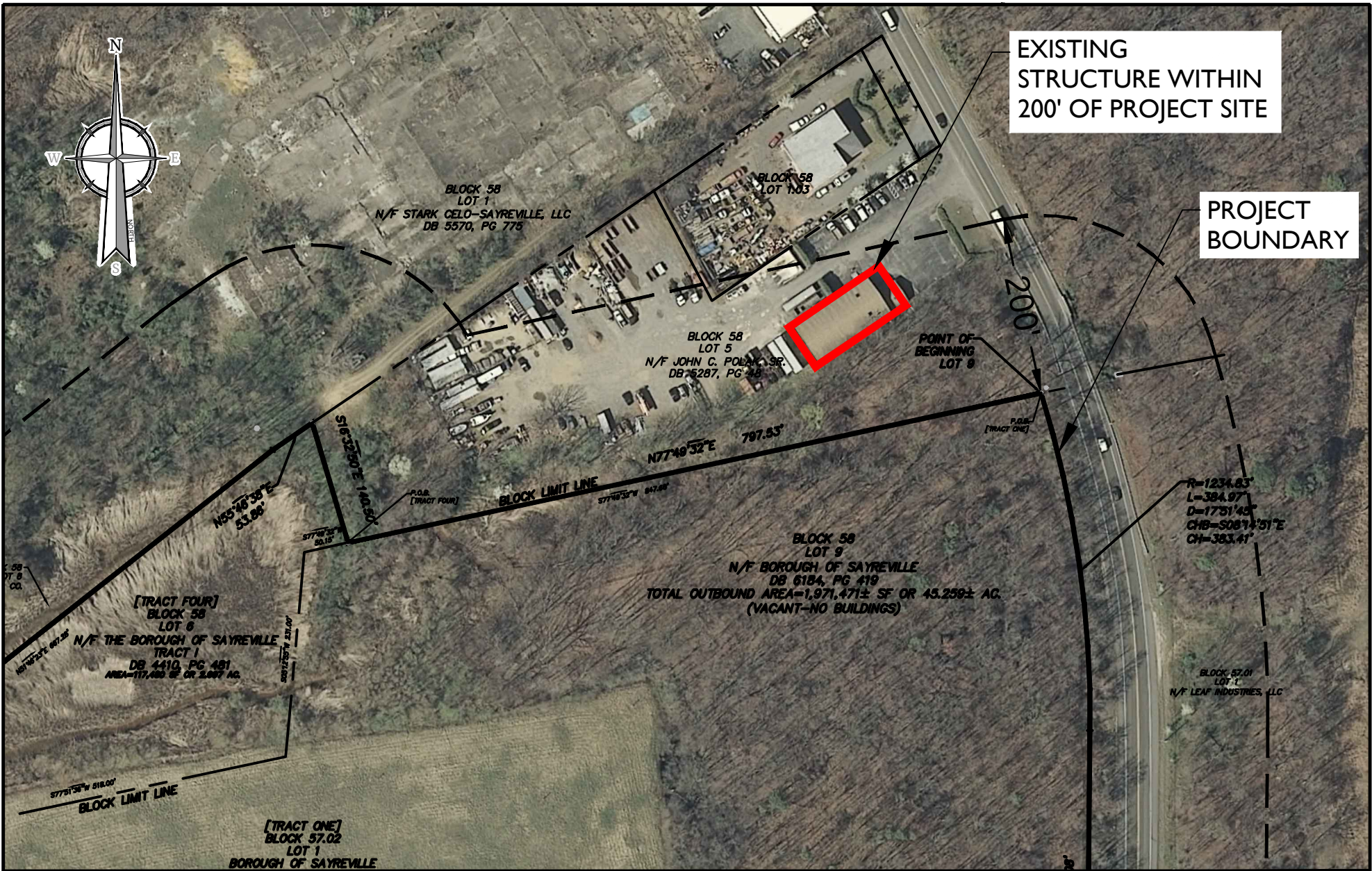


201010000657C:Engineering\Exhibits\C-EXBT-STRC-LCTN.dwg\C-01-STRUCTURE LOCATION-EXHIBIT By: TATIANA LUKIANOV



www.colliersengineering.com



Copyright © 2024, Colliers Engineering & Design All Rights Reserved. This drawing and all the information contained herein is authorized for use only by the party for whom the services were contracted or to whom it is certified. This drawing may not be copied, revised, disclosed, distributed or relied upon for any other purpose without the express written consent of Colliers Engineering & Design.

REV	DATE	DRAWN BY	DESCRIPTION

PRELIMINARY AND FINAL
MAJOR SITE PLAN
FOR
JERNEE MILL
INDUSTRIAL

BLOCK 58
LOTS 2.01 & 9
BOROUGH OF SAYREVILLE
MIDDLESEX COUNTY
NEW JERSEY



PROTECT YOURSELF
ALL STATES REQUIRE NOTIFICATION OF EXCAVATORS, DESIGNERS, OR ANY PERSON PREPARING TO DISTURB THE EARTH'S SURFACE ANYWHERE IN ANY STATE

STATE REQUIRED FILE NUMBER
FOR STATE SPECIFIC DIRECT PHONE NUMBERS VISIT: WWW.CALL811.COM



HOLMDEL (Headquarters)
101 Crawfords Corner Road,
Suite 3400
Holmdel, NJ 07733
Phone: 732.383.1950
COLLIERS ENGINEERING & DESIGN, INC. DOING BUSINESS AS MASER CONSULTING

EXHIBIT

SCALE: 1"=150'	DATE: 4/19/24	DRAWN BY: TL	CHECKED BY: MFS
PROJECT NUMBER: 10000657C		DRAWING NAME: C-EXBT-STRC-LCTN	

SHEET TITLE:
EXISTING STRUCTURE WITHIN 200' OF PROJECT SITE

SHEET NUMBER:
1 of 1