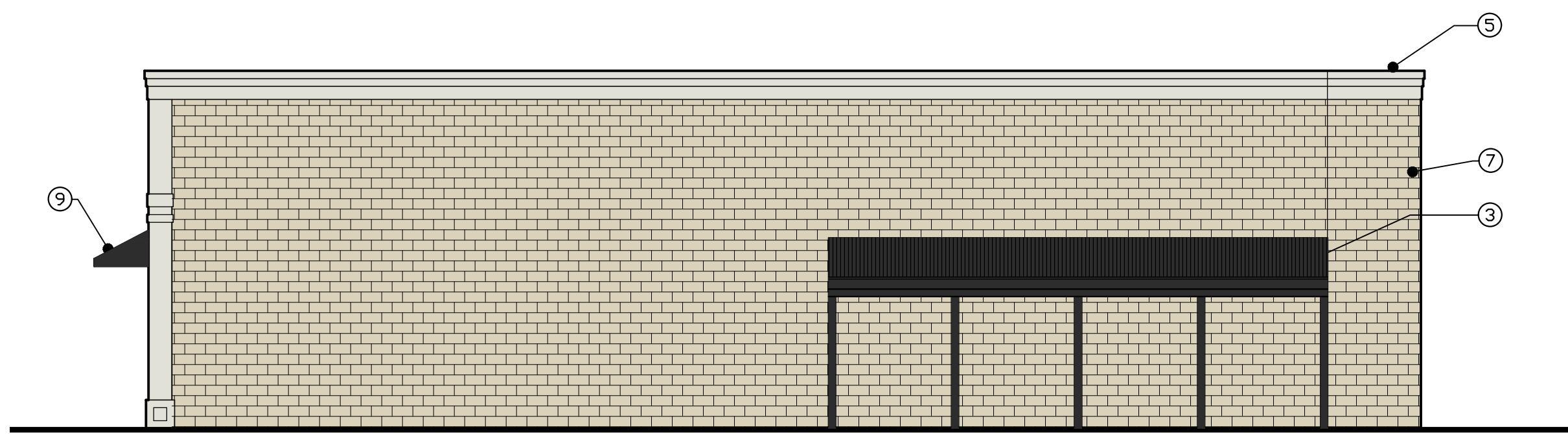
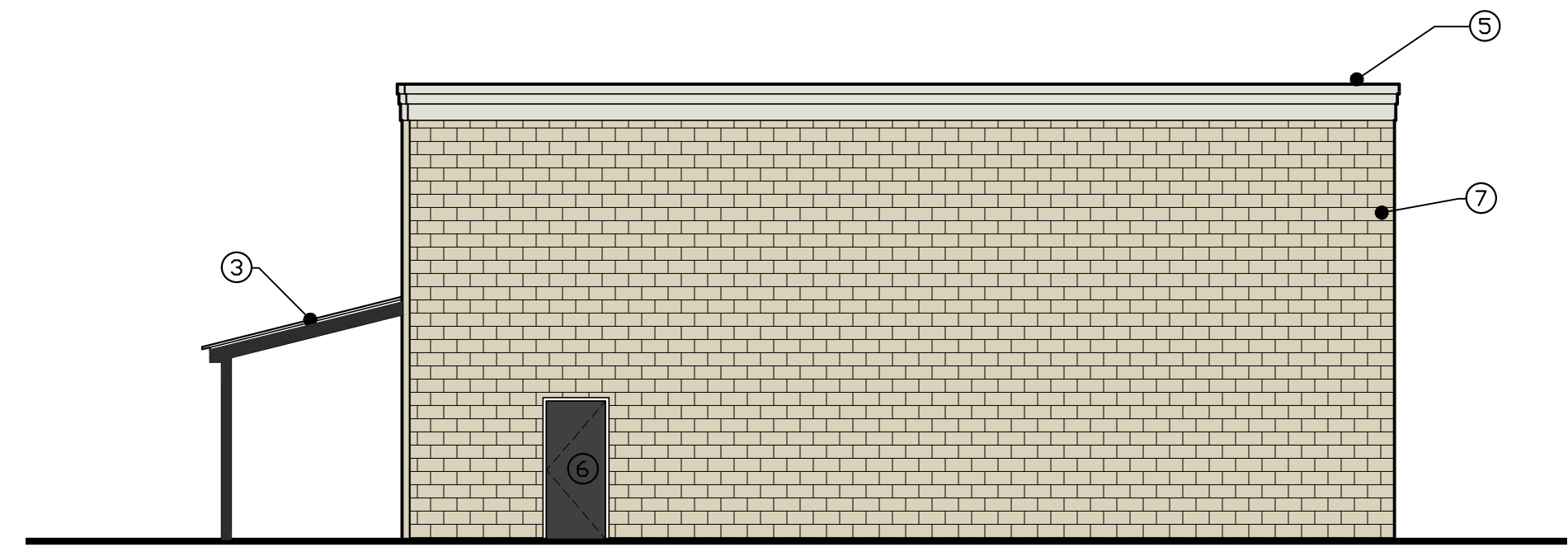


FINISH KEY LEGEND

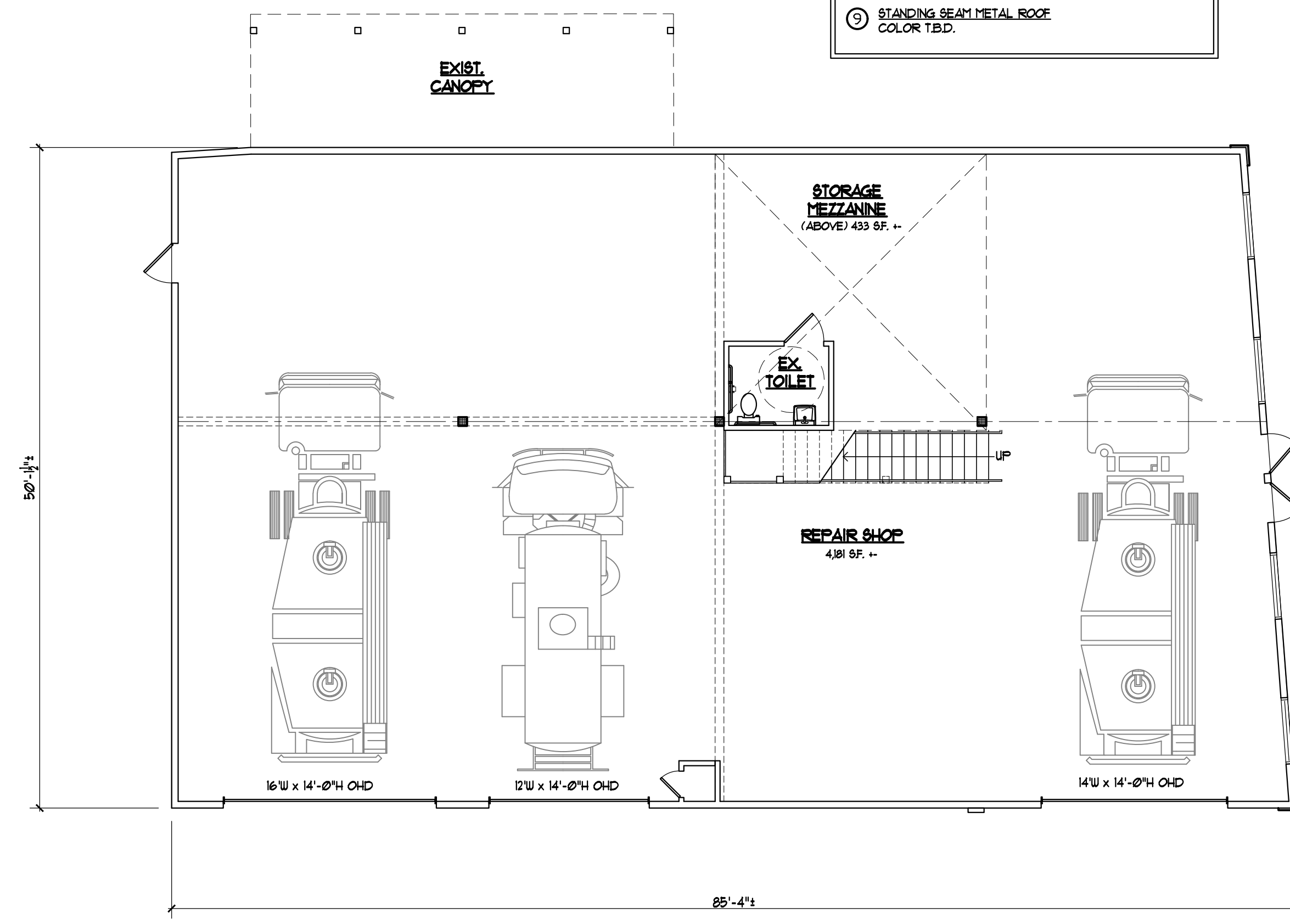
- ① OVERHEAD DOORS
COLOR-STYLE T.B.D.
- ② ALUMINUM WINDOW (EXISTING)
ANODIZED ALUMINUM- 2" FRAME
- ③ CORRUGATED ROOF (EXISTING)
- ④ EIFS STUCCO FINISH
COLOR T.B.D.
- ⑤ DECORATIVE CORNICE
COLOR T.B.D.
- ⑥ HOLLOW METAL EXIT DOORS
COLOR T.B.D.
- ⑦ CONCRETE BLOCK (PAINTED)
COLOR T.B.D.
- ⑧ ADDRESS NUMERALS
6" HIGH INDIVIDUAL NON-INTERNALLY ILLUMINATED
NUMERALS
- ⑨ STANDING SEAM METAL ROOF
COLOR T.B.D.



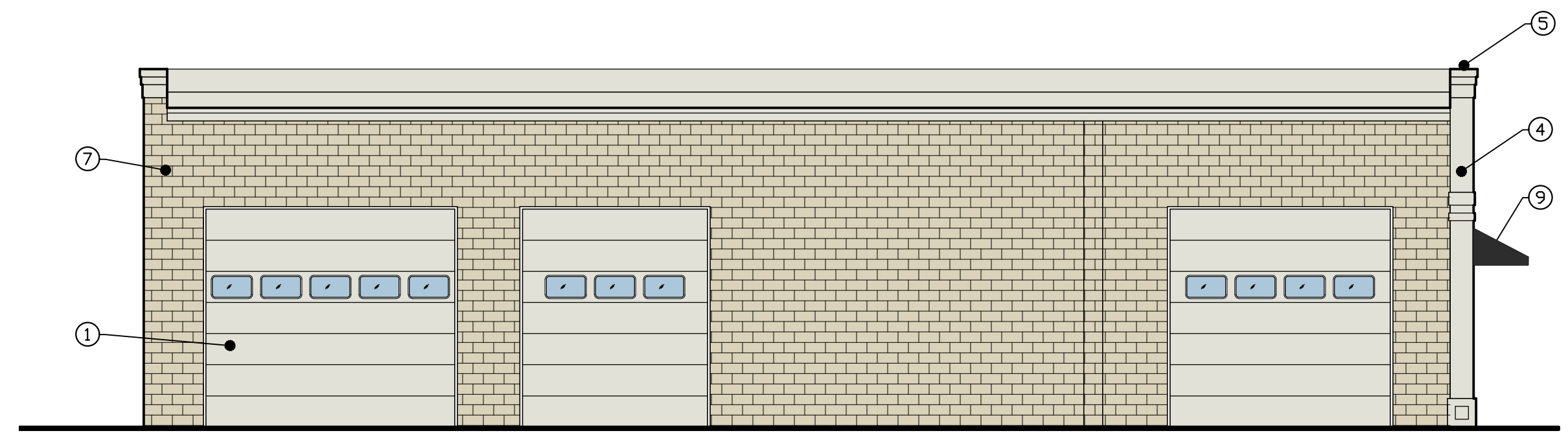
5 WEST ELEVATION
 1/8" = 1'-0"



4 SOUTH ELEVATION
 1/8" = 1'-0"



3 FLOOR PLAN
 1/8" = 1'-0" EXISTING AREA: 4,181 SF --



2 EAST ELEVATION
 1/8" = 1'-0"



1 NORTH ELEVATION
 1/8" = 1'-0"

PROPOSED ALTERED MAINTENANCE BUILDING FOR:
SAYREVILLE LEASING & REPAIR

1965 ROUTE 35
 SAYREVILLE, NEW JERSEY
 LOT: 6 BLOCK: 453

REGISTERED PROFESSIONAL ARCHITECTS
 PLOTTING: PEREZ, AIA
 NJ 12460 CT 09723 FL 0016818
 NY 000745-1 MA 30076
 STEPHEN L. RADOSTI, AIA
 FL 11049 FL 00076

Perez + Radosti
 associates, p.c.

P+Ra
 Architecture
 Interior Design
 www.prra.com
 379 princeton hightown rd, suite 308, cranbury, nj 08512 tel. 609.443.4031 fax 609.443.5277

DRAWING TITLE
 CONCEPTUAL
 FLOOR PLAN
 & COLOR ELEVATIONS
 SHEET NUMBER
SK-1B
 OF